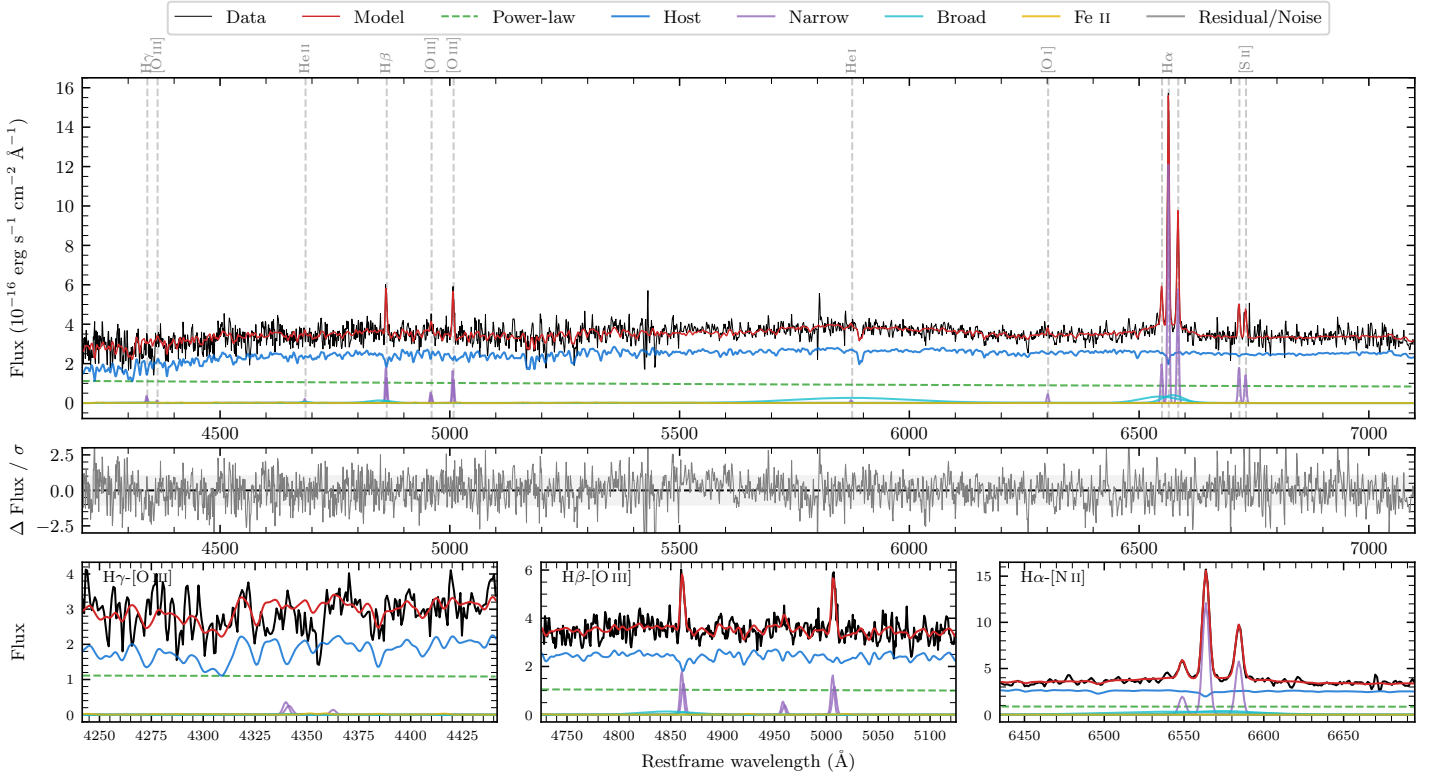
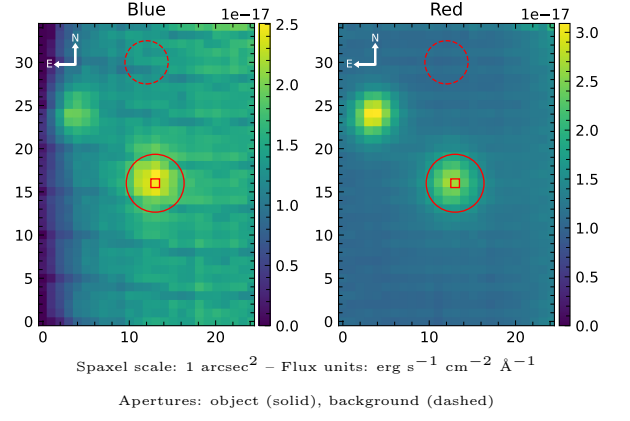


6dFGS gJ134700.9–113335

Spectrum ID	109657851_sp1	Spectrum type	Sy 1.2+
Alt name	g1347009–113335	Quality flag	good
z	0.0858	AGN reference	6dFGS
RA, Dec	206.7538, –11.5599	MW $E(B - V)$	0.056
MJD	60383.69	Power law α_ν	-1.45 ± 0.22
SNR/Å B/R	9.7/12.9	$\log L_{5100, \text{AGN}}$	42.97 ± 0.04
Obs airmass	1.06	$\log H\beta_{\text{Br}}/[\text{O III}]$	< 0.31
SMSS ID	109657851	$\log M_{L5100}/M_\odot$	–
Neighbour	11.8", 109657852	$\log M_{\text{H}\alpha}/M_\odot$	7.01 ± 0.10
SMSS $\langle r_6^{\text{ap}} \rangle$	16.99 ± 0.05	$\log M_{\text{H}\beta}/M_\odot$	–
2MASS K_{ext}	12.91 ± 0.17	$\log M_{[\text{O III}]} / M_\odot$	–



Emission Line Measurements

Line	$\log L$ (erg s $^{-1}$)	FWHM (km s $^{-1}$)	σ (km s $^{-1}$)	EW (Å)
H γ Narrow	39.66 ± 0.24	274 ± 63	115 ± 25	2.26 ± 0.72
Hγ Broad	–	–	–	–
[O III] 4364	–	–	–	–
He II Narrow	39.23 ± 0.40	226 ± 62	95 ± 25	0.88 ± 0.61
He II Broad	–	–	–	–
H β Narrow	40.41 ± 0.05	274 ± 63	115 ± 25	13.47 ± 0.78
Hβ Broad	< 40.69	–	–	–
[O III] 5007	40.38 ± 0.04	274 ± 63	115 ± 25	12.81 ± 0.75
He I Narrow	39.14 ± 0.40	226 ± 62	95 ± 25	0.80 ± 0.61
He I Broad	41.24 ± 0.05	15777 ± 63	6700 ± 25	100.77 ± 5.72
[O I] 6300	39.65 ± 0.18	226 ± 62	95 ± 25	2.71 ± 0.70
H α Narrow	41.10 ± 0.01	226 ± 62	95 ± 25	78.28 ± 0.72
Hα Broad	41.05 ± 0.04	3461 ± 368	1425 ± 51	70.39 ± 3.34
[N II] 6585	40.78 ± 0.02	226 ± 62	95 ± 25	37.52 ± 0.70
[S II] 6718	40.29 ± 0.05	226 ± 62	95 ± 25	12.18 ± 0.93
[S II] 6732	40.18 ± 0.06	226 ± 62	95 ± 25	9.51 ± 0.95

Emission Summary

H α broad SNR	1.83
H β broad SNR	0.65
H γ broad SNR	0.00
AGN frac	0.31
Host frac	0.69
$\log L_{5100, \text{Host}}$	43.32
Fe II/H β	–
Fe II/[O III]	–

Quality Flags

spurious_hab/hbb	0/0
15100	1
balmer	2
balmer_snr	2
hb_width	2
balmer_width	2