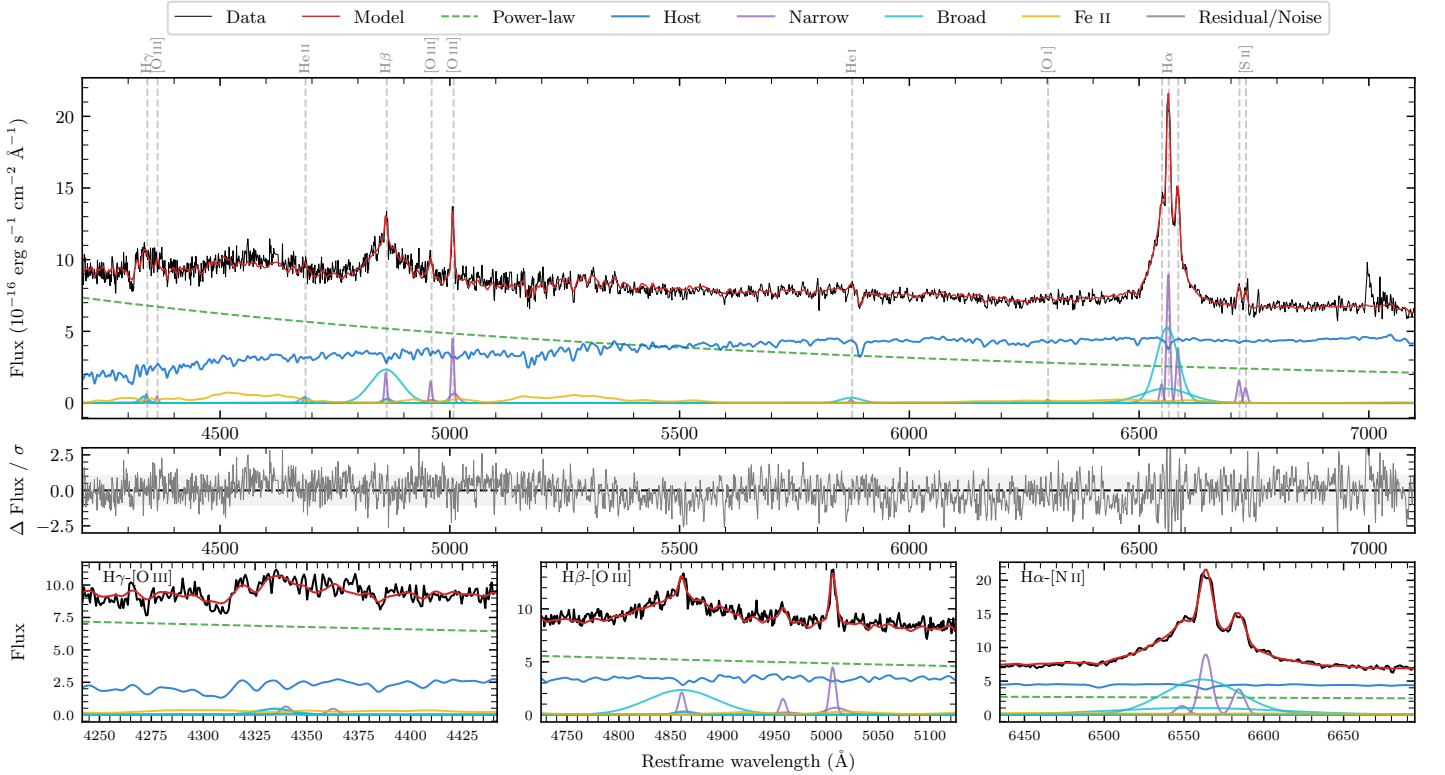
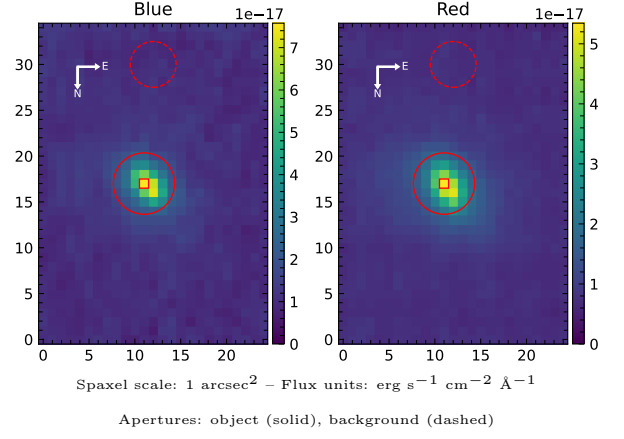


# APMBGC 414+012-045

Spectrum ID	10932380_sp2	Spectrum type	Sy 1.2
Alt name	g0156143-290009	Quality flag	good
$z$	0.0861	AGN reference	6dFGS
RA, Dec	29.0595, -29.0024	MW $E(B-V)$	0.015
MJD	60167.76	Power law $\alpha_\nu$	$0.37 \pm 0.09$
SNR/ $\text{\AA}$ B/R	17.6/24.4	$\log L_{5100, \text{AGN}}$	$43.64 \pm 0.01$
Obs airmass	1.01	$\log H\beta_{\text{Br}}/[\text{O III}]$	$0.64 \pm 0.04$
SMSS ID	10932380	$\log M_{L5100}/M_\odot$	$8.05 \pm 0.14$
Neighbour	None $< 15''$	$\log M_{\text{H}\alpha}/M_\odot$	$7.38 \pm 0.03$
SMSS $\langle r_6 \rangle_{\text{ap}}$	$16.30 \pm 0.09$	$\log M_{\text{H}\beta}/M_\odot$	$7.96 \pm 0.14$
2MASS $K_{\text{ext}}$	$12.49 \pm 0.11$	$\log M_{[\text{O III}]} / M_\odot$	$7.81 \pm 0.14$



## Emission Line Measurements

Line	$\log L$ ( $\text{erg s}^{-1}$ )	FWHM ( $\text{km s}^{-1}$ )	$\sigma$ ( $\text{km s}^{-1}$ )	EW ( $\text{\AA}$ )
H $\gamma$ Narrow	$40.08 \pm 0.26$	$445 \pm 70$	$377 \pm 48$	$0.97 \pm 0.40$
<b>H<math>\gamma</math> Broad</b>	<b><math>40.64 \pm 0.12</math></b>	<b><math>1384 \pm 161</math></b>	<b><math>509 \pm 62</math></b>	<b><math>3.05 \pm 0.43</math></b>
[O III] 4364	$39.76 \pm 0.30$	$411 \pm 71$	$174 \pm 28$	$0.47 \pm 0.22$
He II Narrow	$39.76 \pm 0.33$	$411 \pm 71$	$174 \pm 28$	$0.56 \pm 0.25$
<b>He II Broad</b>	<b><math>40.36 \pm 0.21</math></b>	<b><math>1549 \pm 236</math></b>	<b><math>658 \pm 100</math></b>	<b><math>1.96 \pm 0.48</math></b>
H $\beta$ Narrow	$40.65 \pm 0.10$	$445 \pm 70$	$378 \pm 48$	$4.68 \pm 0.50$
<b>H<math>\beta</math> Broad</b>	<b><math>41.62 \pm 0.03</math></b>	<b><math>4480 \pm 718</math></b>	<b><math>1764 \pm 155</math></b>	<b><math>42.03 \pm 0.99</math></b>
[O III] 5007	$40.99 \pm 0.03$	$445 \pm 70$	$378 \pm 48$	$11.01 \pm 0.56$
He I Narrow	$39.60 \pm 0.29$	$411 \pm 71$	$174 \pm 28$	$0.66 \pm 0.35$
<b>He I Broad</b>	<b><math>40.67 \pm 0.09</math></b>	<b><math>2789 \pm 290</math></b>	<b><math>1184 \pm 123</math></b>	<b><math>7.07 \pm 0.76</math></b>
[O I] 6300	$39.66 \pm 0.23$	$411 \pm 71$	$174 \pm 28$	$0.89 \pm 0.33$
H $\alpha$ Narrow	$41.24 \pm 0.04$	$411 \pm 71$	$174 \pm 28$	$36.69 \pm 0.43$
<b>H<math>\alpha</math> Broad</b>	<b><math>41.95 \pm 0.02</math></b>	<b><math>2847 \pm 88</math></b>	<b><math>1194 \pm 42</math></b>	<b><math>190.67 \pm 1.51</math></b>
[N II] 6585	$40.87 \pm 0.08$	$411 \pm 71$	$174 \pm 28$	$15.69 \pm 0.41$
[S II] 6718	$40.48 \pm 0.04$	$411 \pm 71$	$174 \pm 28$	$6.88 \pm 0.52$
[S II] 6732	$40.32 \pm 0.08$	$411 \pm 71$	$174 \pm 28$	$4.74 \pm 0.53$

## Emission Summary

H $\alpha$ broad SNR	12.52
H $\beta$ broad SNR	5.35
H $\gamma$ broad SNR	1.99
AGN frac	0.58
Host frac	0.42
$\log L_{5100, \text{Host}}$	43.49
Fe II/H $\beta$	0.74
Fe II/[O III]	3.03

## Quality Flags

spurious_hab/hbb	0/0
15100	2
balmer	0
balmer_snr	1
hb_width	0
balmer_width	0