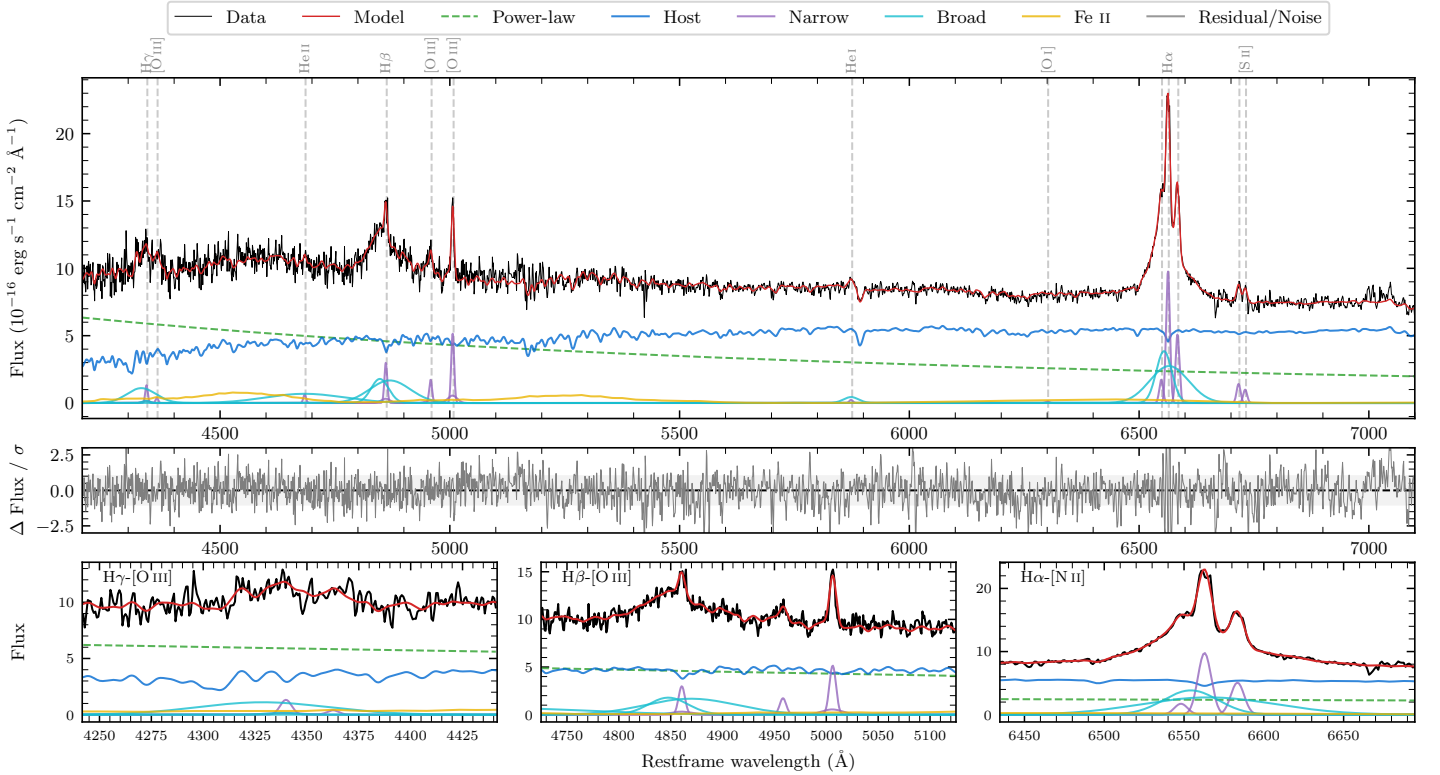
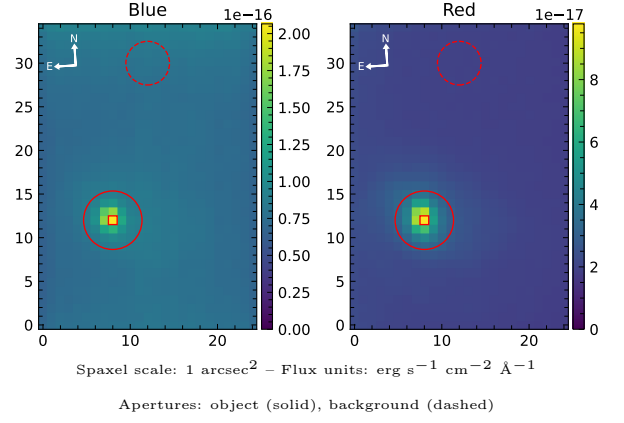


APMBGC 414+012-045

Spectrum ID	10932380_sp1	Spectrum type	Sy 1.2
Alt name	g0156143-290009	Quality flag	good
z	0.0861	AGN reference	6dFGS
RA, Dec	29.0595, -29.0024	MW $E(B-V)$	0.015
MJD	59501.55	Power law α_ν	0.22 ± 0.15
SNR/ \AA B/R	16.4/29.8	$\log L_{5100, \text{AGN}}$	43.59 ± 0.02
Obs airmass	1.04	$\log H\beta_{\text{Br}}/[\text{O III}]$	0.69 ± 0.04
SMSS ID	10932380	$\log M_{L5100}/M_\odot$	7.99 ± 0.07
Neighbour	None $< 15''$	$\log M_{\text{H}\alpha}/M_\odot$	7.29 ± 0.03
SMSS $\langle r_6''_{\text{ap}} \rangle$	16.30 ± 0.09	$\log M_{\text{H}\beta}/M_\odot$	7.97 ± 0.07
2MASS K_{ext}	12.49 ± 0.11	$\log M_{[\text{O III}]} / M_\odot$	7.79 ± 0.07



Emission Line Measurements

Line	$\log L$ (erg s^{-1})	FWHM (km s^{-1})	σ (km s^{-1})	EW (\AA)
H γ Narrow	40.39 ± 0.15	479 ± 65	345 ± 53	2.25 ± 0.59
Hγ Broad	41.26 ± 0.06	4626 ± 517	1822 ± 61	16.56 ± 1.17
[O III] 4364	39.73 ± 0.36	449 ± 63	190 ± 25	0.50 ± 0.35
He II Narrow	39.97 ± 0.22	449 ± 63	190 ± 25	1.01 ± 0.36
He II Broad	41.48 ± 0.05	12843 ± 183	5454 ± 77	32.03 ± 2.01
H β Narrow	40.79 ± 0.06	479 ± 65	345 ± 53	7.32 ± 0.67
Hβ Broad	41.74 ± 0.02	4263 ± 314	2007 ± 63	64.47 ± 1.54
[O III] 5007	41.04 ± 0.04	479 ± 65	345 ± 53	13.90 ± 0.76
He I Narrow	39.65 ± 0.28	449 ± 63	190 ± 25	0.81 ± 0.28
He I Broad	40.56 ± 0.08	1970 ± 130	836 ± 55	6.55 ± 0.59
[O I] 6300	39.35 ± 0.35	449 ± 63	190 ± 25	0.47 ± 0.32
H α Narrow	41.31 ± 0.01	449 ± 63	190 ± 25	47.05 ± 0.41
Hα Broad	41.96 ± 0.01	2524 ± 79	1270 ± 27	209.11 ± 1.29
[N II] 6585	41.03 ± 0.02	449 ± 63	190 ± 25	24.70 ± 0.40
[S II] 6718	40.48 ± 0.04	449 ± 63	190 ± 25	7.34 ± 0.46
[S II] 6732	40.33 ± 0.05	449 ± 63	190 ± 25	5.20 ± 0.44

Emission Summary

H α broad SNR	12.04
H β broad SNR	6.09
H γ broad SNR	2.39
AGN frac	0.48
Host frac	0.52
$\log L_{5100, \text{Host}}$	43.63
Fe II/H β	0.68
Fe II/[O III]	3.37

Quality Flags

spurious_hab/hbb	0/0
15100	1
balmer	0
balmer_snr	1
hb_width	0
balmer_width	0