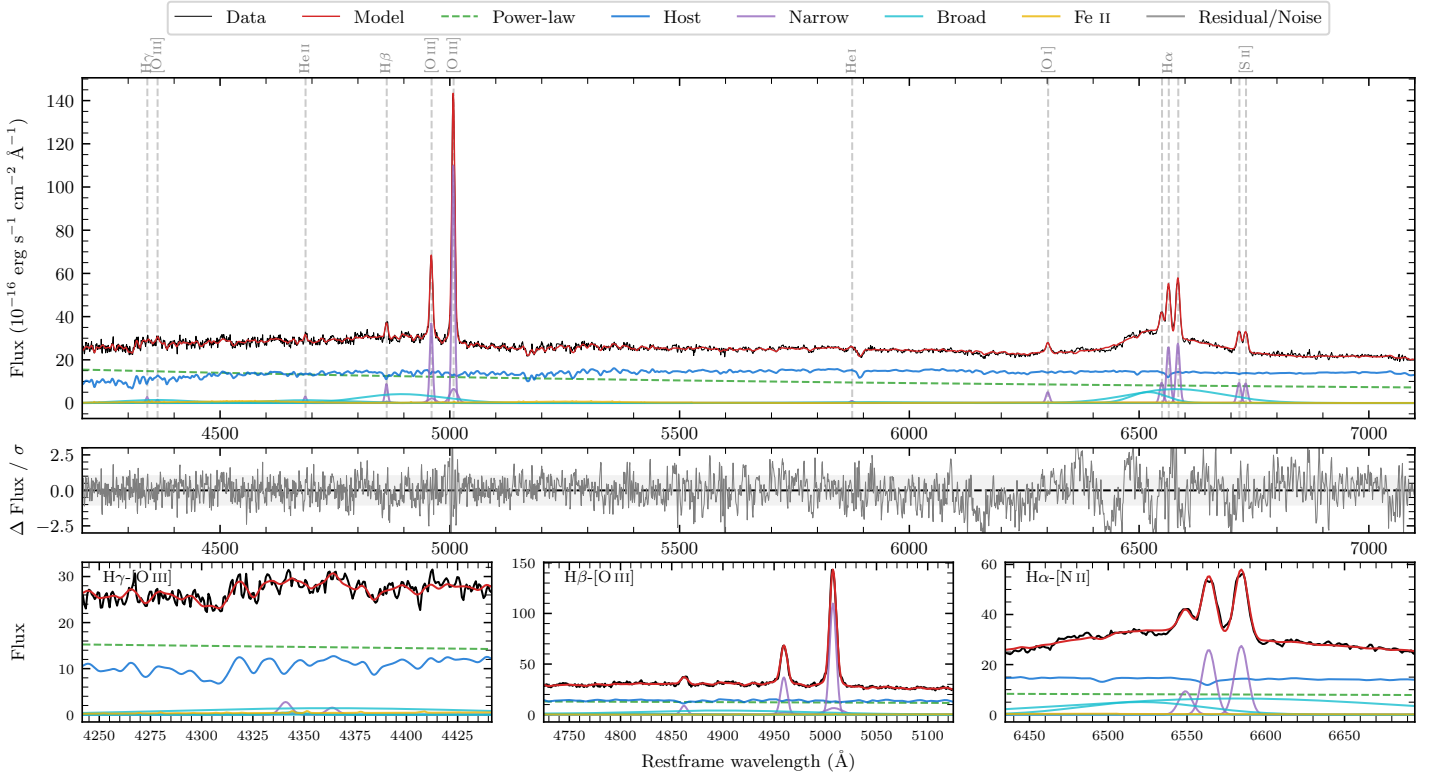
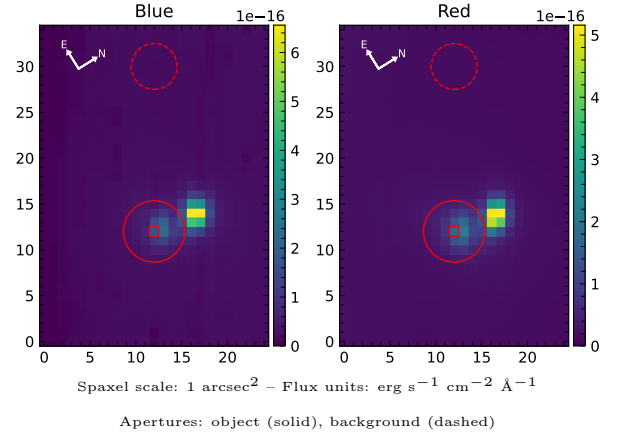


# LEDA 868158

Spectrum ID	109225919_sp1	Spectrum type	Sy 1.8+
Alt name	g1453235-182615	Quality flag	good
$z$	0.0650	AGN reference	6dFGS
RA, Dec	223.3473, -18.4374	MW $E(B-V)$	0.077
MJD	59725.52	Power law $\alpha_\nu$	$-0.55 \pm 0.11$
SNR/ $\text{\AA}$ B/R	20.6/38.6	$\log L_{5100, \text{AGN}}$	$43.78 \pm 0.02$
Obs airmass	1.03	$\log H\beta_{\text{Br}}/[\text{O III}]$	$< -0.97$
SMSS ID	109225919	$\log M_{L5100}/M_\odot$	—
Neighbour	8.0", 2176736261	$\log M_{\text{H}\alpha}/M_\odot$	$8.56 \pm 0.02$
SMSS $\langle r_{6''}^{\text{ap}} \rangle$	$14.97 \pm 0.02$	$\log M_{\text{H}\beta}/M_\odot$	—
2MASS $K_{\text{ext}}$	$11.73 \pm 0.07$	$\log M_{[\text{O III}]} / M_\odot$	—



## Emission Line Measurements

Line	$\log L$ (erg s <sup>-1</sup> )	FWHM (km s <sup>-1</sup> )	$\sigma$ (km s <sup>-1</sup> )	EW (Å)
H $\gamma$ Narrow	$40.38 \pm 0.17$	$472 \pm 63$	$256 \pm 26$	$1.61 \pm 0.44$
<b>H<math>\gamma</math> Broad</b>	—	—	—	—
[O III] 4364	$40.07 \pm 0.26$	$456 \pm 62$	$193 \pm 25$	$0.79 \pm 0.29$
He II Narrow	$40.39 \pm 0.11$	$456 \pm 62$	$193 \pm 25$	$1.82 \pm 0.28$
<b>He II Broad</b>	—	—	—	—
H $\beta$ Narrow	$40.94 \pm 0.04$	$472 \pm 63$	$257 \pm 26$	$6.80 \pm 0.44$
<b>H<math>\beta</math> Broad</b>	$< 41.07$	—	—	—
[O III] 5007	$42.05 \pm 0.01$	$472 \pm 63$	$257 \pm 26$	$91.23 \pm 0.52$
He I Narrow	$40.00 \pm 0.15$	$456 \pm 62$	$193 \pm 25$	$1.03 \pm 0.20$
<b>He I Broad</b>	<b><math>41.04 \pm 0.09</math></b>	<b><math>10666 \pm 69</math></b>	<b><math>4529 \pm 28</math></b>	<b><math>11.43 \pm 0.98</math></b>
[O I] 6300	$40.74 \pm 0.02$	$456 \pm 62$	$193 \pm 25$	$6.34 \pm 0.22$
H $\alpha$ Narrow	$41.48 \pm 0.01$	$456 \pm 62$	$193 \pm 25$	$36.22 \pm 0.29$
<b>H<math>\alpha</math> Broad</b>	<b><math>42.37 \pm 0.01</math></b>	<b><math>8196 \pm 153</math></b>	<b><math>3628 \pm 27</math></b>	<b><math>281.21 \pm 1.34</math></b>
[N II] 6585	$41.50 \pm 0.01$	$456 \pm 62$	$193 \pm 25$	$38.68 \pm 0.28$
[S II] 6718	$41.04 \pm 0.01$	$456 \pm 62$	$193 \pm 25$	$13.70 \pm 0.27$
[S II] 6732	$41.03 \pm 0.01$	$456 \pm 62$	$193 \pm 25$	$13.51 \pm 0.29$

## Emission Summary

H $\alpha$ broad SNR	8.46
H $\beta$ broad SNR	0.00
H $\gamma$ broad SNR	0.00
AGN frac	0.47
Host frac	0.53
$\log L_{5100, \text{Host}}$	43.84
Fe II/H $\beta$	—
Fe II/[O III]	—

## Quality Flags

spurious_hab/hbb	0/2
15100	1
balmer	2
balmer_snr	2
hb_width	2
balmer_width	2