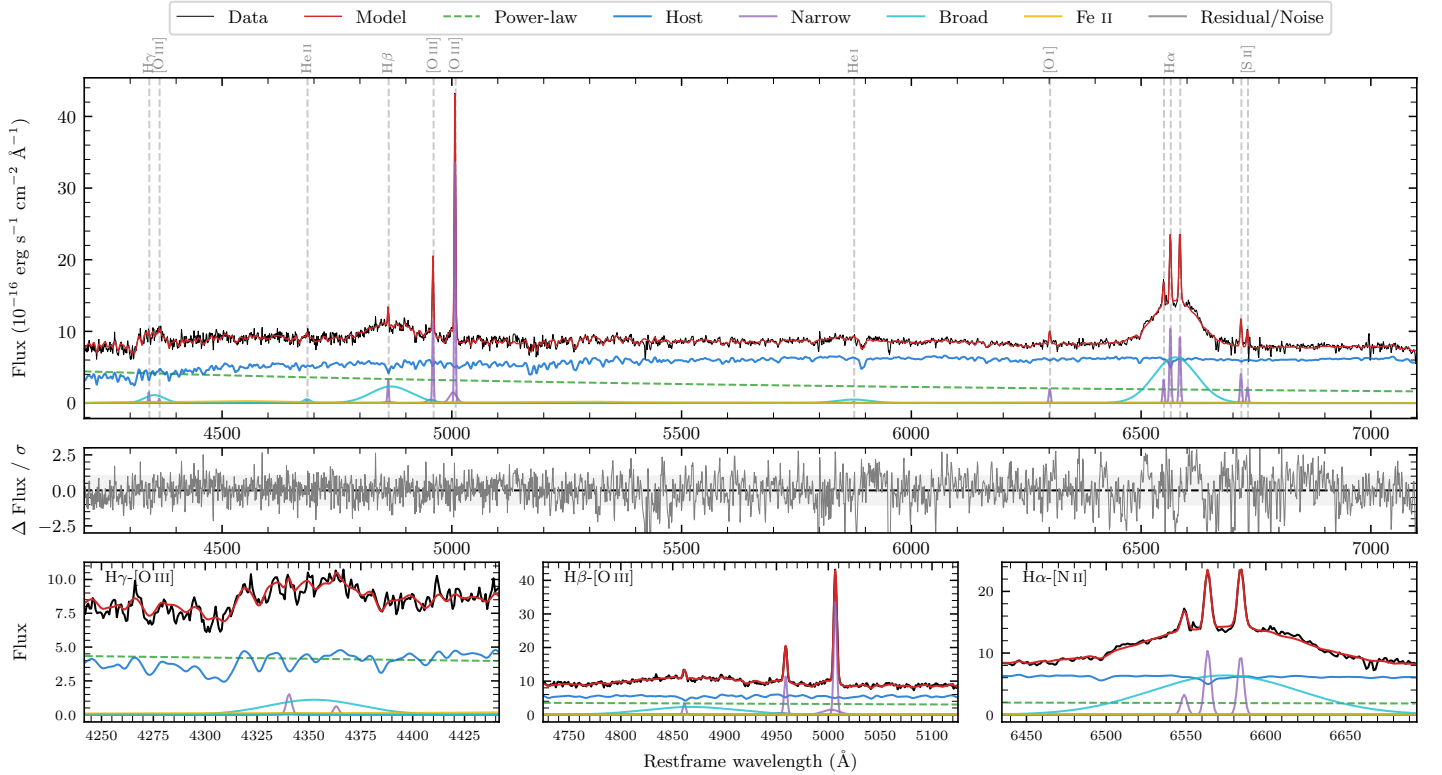
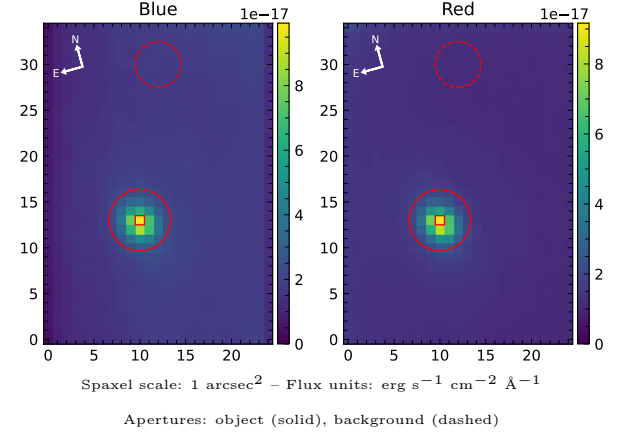


LEDA 1052095

Spectrum ID	107903088_sp2	Spectrum type	Sy 1.5
Alt name	g1340153-045332	Quality flag	good
z	0.0862	AGN reference	6dFGS
RA, Dec	205.0640, -4.8921	MW $E(B - V)$	0.020
MJD	59308.49	Power law α_ν	-0.10 ± 0.17
SNR/ \AA B/R	18.3/31.4	$\log L_{5100, \text{AGN}}$	43.46 ± 0.02
Obs airmass	1.61	$\log H\beta_{\text{Br}}/[\text{O III}]$	0.22 ± 0.02
SMSS ID	107903088	$\log M_{L5100}/M_\odot$	8.26 ± 0.03
Neighbour	None $< 15''$	$\log M_{\text{H}\alpha}/M_\odot$	8.01 ± 0.01
SMSS $\langle r_6''_{\text{ap}} \rangle$	16.52 ± 0.05	$\log M_{\text{H}\beta}/M_\odot$	8.29 ± 0.03
2MASS K_{ext}	12.59 ± 0.10	$\log M_{[\text{O III}]} / M_\odot$	8.34 ± 0.02



Emission Line Measurements

Line	$\log L$ (erg s^{-1})	FWHM (km s^{-1})	σ (km s^{-1})	EW (\AA)
H γ Narrow	40.09 ± 0.16	217 ± 62	249 ± 30	1.59 ± 0.58
Hγ Broad	41.12 ± 0.06	3527 ± 126	1268 ± 33	16.68 ± 1.13
[O III] 4364	39.62 ± 0.32	216 ± 62	88 ± 25	0.54 ± 0.26
He II Narrow	39.49 ± 0.39	216 ± 62	88 ± 25	0.46 ± 0.25
He II Broad	40.33 ± 0.15	1178 ± 62	500 ± 25	3.22 ± 0.62
H β Narrow	40.47 ± 0.06	217 ± 62	249 ± 30	4.74 ± 0.65
Hβ Broad	41.72 ± 0.02	6202 ± 160	2344 ± 27	83.32 ± 1.66
[O III] 5007	41.50 ± 0.01	217 ± 62	249 ± 30	53.39 ± 0.74
He I Narrow	39.12 ± 0.40	216 ± 62	88 ± 25	0.30 ± 0.22
He I Broad	40.96 ± 0.04	4384 ± 71	1861 ± 29	20.78 ± 1.12
[O I] 6300	40.28 ± 0.04	216 ± 62	88 ± 25	5.03 ± 0.27
H α Narrow	41.01 ± 0.01	216 ± 62	88 ± 25	28.98 ± 0.34
Hα Broad	42.18 ± 0.01	4988 ± 67	1857 ± 25	429.62 ± 1.86
[N II] 6585	40.97 ± 0.01	216 ± 62	88 ± 25	26.73 ± 0.35
[S II] 6718	40.62 ± 0.02	216 ± 62	88 ± 25	12.29 ± 0.41
[S II] 6732	40.35 ± 0.05	216 ± 62	88 ± 25	6.60 ± 0.45

Emission Summary

H α broad SNR	13.45
H β broad SNR	5.07
H γ broad SNR	2.53
AGN frac	0.37
Host frac	0.63
$\log L_{5100, \text{Host}}$	43.69
Fe II/H β	0.27
Fe II/[O III]	0.44

Quality Flags

spurious_hab/hbb	0/0
15100	1
balmer	0
balmer_snr	1
hb_width	0
balmer_width	0