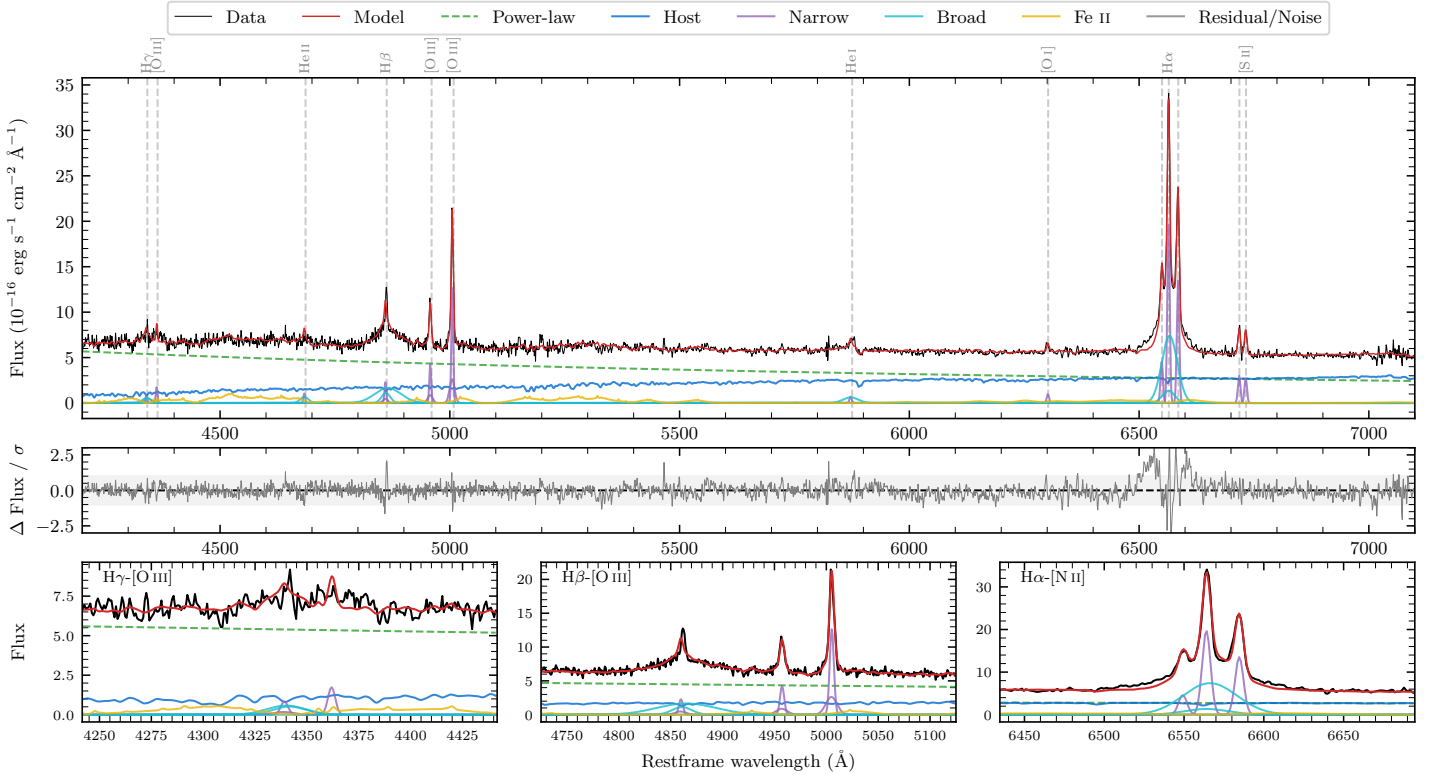
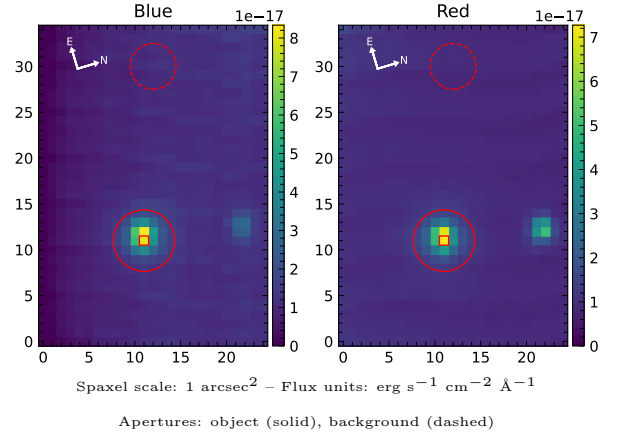


# LEDA 3327939

Spectrum ID	107818403_sp1	Spectrum type	Sy 1.5
Alt name	g1321353-001306	Quality flag	good
$z$	0.0816	AGN reference	6dFGS
RA, Dec	200.3972, -0.2183	MW $E(B - V)$	0.018
MJD	59993.76	Power law $\alpha_\nu$	$-0.38 \pm 0.30$
SNR/ $\text{\AA}$ B/R	5.9/9.5	$\log L_{5100, \text{AGN}}$	$43.55 \pm 0.05$
Obs airmass	1.18	$\log H\beta_{\text{Br}}/[\text{O III}]$	$0.15 \pm 0.07$
SMSS ID	107818403	$\log M_{L5100}/M_\odot$	$7.52 \pm 0.25$
Neighbour	10.8", 107818401	$\log M_{\text{H}\alpha}/M_\odot$	$6.91 \pm 0.24$
SMSS $\langle r_{6'' \text{ap}} \rangle$	$16.42 \pm 0.07$	$\log M_{\text{H}\beta}/M_\odot$	$7.37 \pm 0.25$
2MASS $K_{\text{ext}}$	$12.91 \pm 0.11$	$\log M_{[\text{O III}]} / M_\odot$	$7.44 \pm 0.25$



## Emission Line Measurements

Line	$\log L$ ( $\text{erg s}^{-1}$ )	FWHM ( $\text{km s}^{-1}$ )	$\sigma$ ( $\text{km s}^{-1}$ )	EW ( $\text{\AA}$ )
H $\gamma$ Narrow	$40.02 \pm 0.37$	$326 \pm 66$	$215 \pm 43$	$1.15 \pm 0.83$
<b>H<math>\gamma</math> Broad</b>	<b><math>40.72 \pm 0.18</math></b>	<b><math>1398 \pm 217</math></b>	<b><math>514 \pm 84</math></b>	<b><math>4.74 \pm 1.22</math></b>
[O III] 4364	$40.15 \pm 0.26$	$286 \pm 64$	$121 \pm 26$	$1.55 \pm 0.53$
He II Narrow	$39.97 \pm 0.34$	$286 \pm 64$	$121 \pm 26$	$1.15 \pm 0.53$
<b>He II Broad</b>	<b><math>40.44 \pm 0.25</math></b>	<b><math>1323 \pm 112</math></b>	<b><math>562 \pm 47</math></b>	<b><math>3.39 \pm 1.13</math></b>
H $\beta$ Narrow	$40.51 \pm 0.16$	$326 \pm 66$	$215 \pm 43$	$4.24 \pm 0.89$
<b>H<math>\beta</math> Broad</b>	<b><math>41.40 \pm 0.06</math></b>	<b><math>2534 \pm 654</math></b>	<b><math>1295 \pm 110</math></b>	<b><math>34.94 \pm 2.15</math></b>
[O III] 5007	$41.25 \pm 0.04$	$326 \pm 66$	$215 \pm 43$	$25.23 \pm 1.04$
He I Narrow	$39.88 \pm 0.26$	$286 \pm 64$	$121 \pm 26$	$1.37 \pm 0.46$
<b>He I Broad</b>	<b><math>40.70 \pm 0.13</math></b>	<b><math>1980 \pm 426</math></b>	<b><math>841 \pm 181</math></b>	<b><math>8.42 \pm 1.21</math></b>
[O I] 6300	$40.06 \pm 0.15$	$286 \pm 64$	$121 \pm 26$	$2.32 \pm 0.49$
H $\alpha$ Narrow	$41.38 \pm 0.03$	$286 \pm 64$	$121 \pm 26$	$51.59 \pm 0.63$
<b>H<math>\alpha</math> Broad</b>	<b><math>41.83 \pm 0.08</math></b>	<b><math>1786 \pm 512</math></b>	<b><math>640 \pm 185</math></b>	<b><math>141.42 \pm 1.57</math></b>
[N II] 6585	$41.21 \pm 0.07$	$286 \pm 64$	$121 \pm 26$	$35.61 \pm 0.60$
[S II] 6718	$40.57 \pm 0.06$	$286 \pm 64$	$121 \pm 26$	$8.31 \pm 0.73$
[S II] 6732	$40.53 \pm 0.06$	$286 \pm 64$	$121 \pm 26$	$7.56 \pm 0.75$

## Emission Summary

H $\alpha$ broad SNR	8.35
H $\beta$ broad SNR	2.64
H $\gamma$ broad SNR	1.18
AGN frac	0.70
Host frac	0.30
$\log L_{5100, \text{Host}}$	43.18
Fe II/H $\beta$	1.11
Fe II/[O III]	1.61

## Quality Flags

spurious_hab/hbb	0/0
15100	0
balmer	1
balmer_snr	1
hb_width	1
balmer_width	0