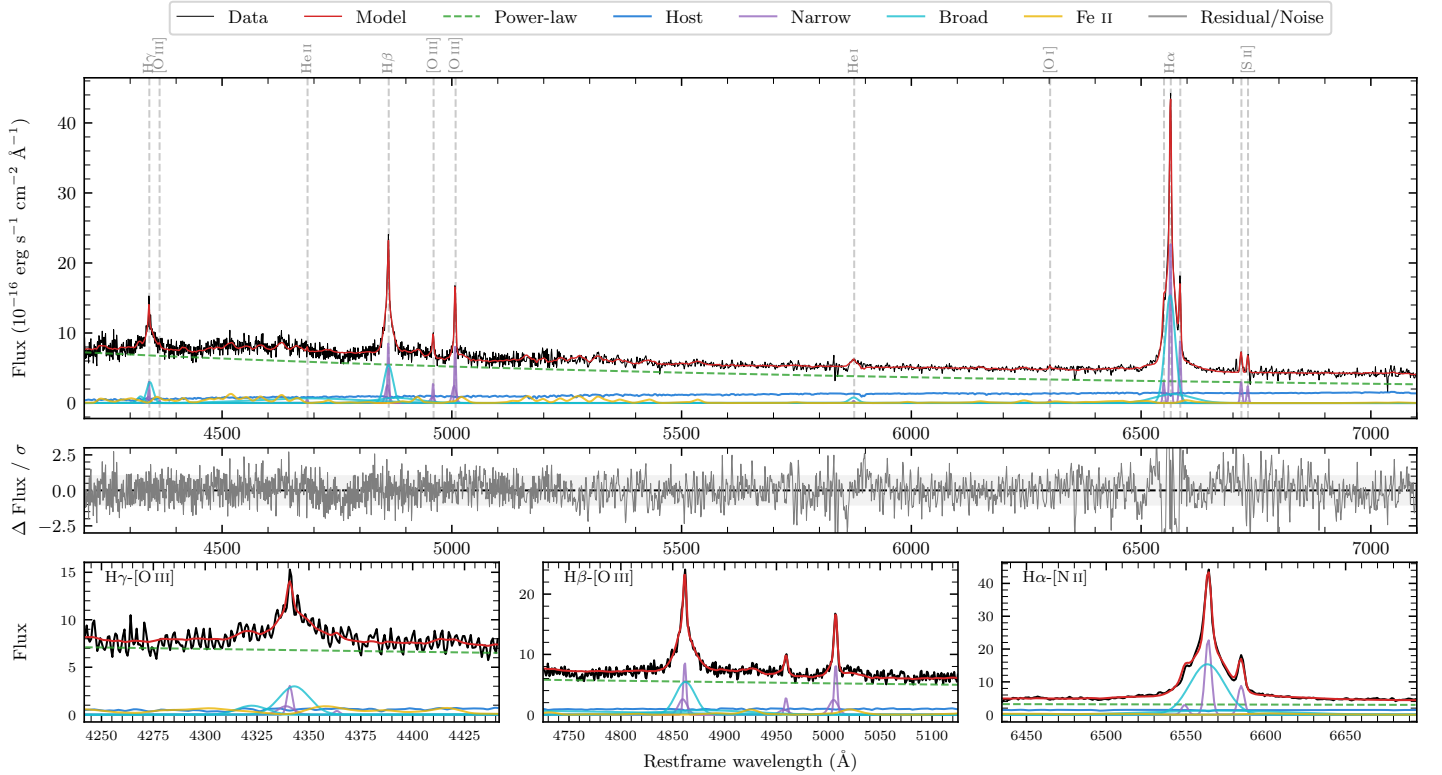
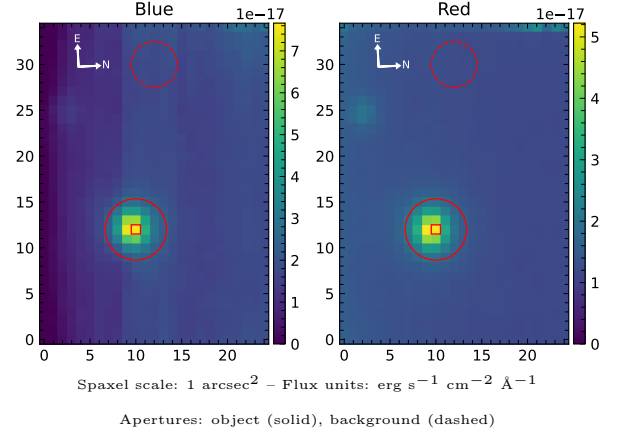


LEDA 995990

Spectrum ID	107532089_sp1	Spectrum type	Sy 1.2
Alt name	g1337396-090228	Quality flag	good
z	0.0800	AGN reference	6dFGS
RA, Dec	204.4149, -9.0412	MW $E(B - V)$	0.038
MJD	59347.54	Power law α_ν	-0.10 ± 0.12
SNR/ \AA B/R	11.0/15.7	$\log L_{5100, \text{AGN}}$	43.61 ± 0.02
Obs airmass	1.09	$\log H\beta_{\text{Br}}/[\text{O III}]$	0.56 ± 0.04
SMSS ID	107532089	$\log M_{L5100}/M_\odot$	7.08 ± 0.04
Neighbour	14.4", 107532090	$\log M_{\text{H}\alpha}/M_\odot$	6.68 ± 0.04
SMSS $\langle r_{6''}^{\text{ap}} \rangle$	16.64 ± 0.04	$\log M_{\text{H}\beta}/M_\odot$	6.98 ± 0.04
2MASS K_{ext}	13.59 ± 0.11	$\log M_{[\text{O III}]} / M_\odot$	6.86 ± 0.05



Emission Line Measurements

Line	$\log L$ (erg s ⁻¹)	FWHM (km s ⁻¹)	σ (km s ⁻¹)	EW (Å)
H γ Narrow	40.50 ± 0.10	257 ± 63	200 ± 31	2.93 ± 0.37
Hγ Broad	41.09 ± 0.05	1269 ± 80	677 ± 47	11.35 ± 0.59
[O III] 4364	39.36 ± 0.42	215 ± 63	91 ± 25	0.21 ± 0.20
He II Narrow	39.57 ± 0.31	215 ± 63	91 ± 25	0.40 ± 0.21
He II Broad	41.53 ± 0.05	17659 ± 63	7499 ± 25	36.61 ± 2.26
H β Narrow	41.01 ± 0.04	257 ± 63	200 ± 31	11.69 ± 0.40
Hβ Broad	41.56 ± 0.03	1488 ± 59	1028 ± 61	41.90 ± 1.36
[O III] 5007	41.00 ± 0.03	257 ± 63	200 ± 31	12.17 ± 0.45
He I Narrow	39.40 ± 0.31	215 ± 63	91 ± 25	0.41 ± 0.16
He I Broad	40.53 ± 0.06	1181 ± 63	501 ± 25	5.48 ± 0.44
[O I] 6300	39.58 ± 0.17	215 ± 63	91 ± 25	0.71 ± 0.17
H α Narrow	41.29 ± 0.01	215 ± 63	91 ± 25	39.87 ± 0.27
Hα Broad	41.98 ± 0.01	1242 ± 63	593 ± 25	192.79 ± 1.08
[N II] 6585	40.88 ± 0.01	215 ± 63	91 ± 25	15.35 ± 0.23
[S II] 6718	40.43 ± 0.03	215 ± 63	91 ± 25	5.65 ± 0.26
[S II] 6732	40.32 ± 0.04	215 ± 63	91 ± 25	4.45 ± 0.32

Emission Summary

H α broad SNR	27.28
H β broad SNR	10.01
H γ broad SNR	4.93
AGN frac	0.85
Host frac	0.15
$\log L_{5100, \text{Host}}$	42.86
Fe II/H β	0.90
Fe II/[O III]	3.27

Quality Flags

spurious_hab/hbb	0/0
15100	0
balmer	0
balmer_snr	0
hb_width	1
balmer_width	0