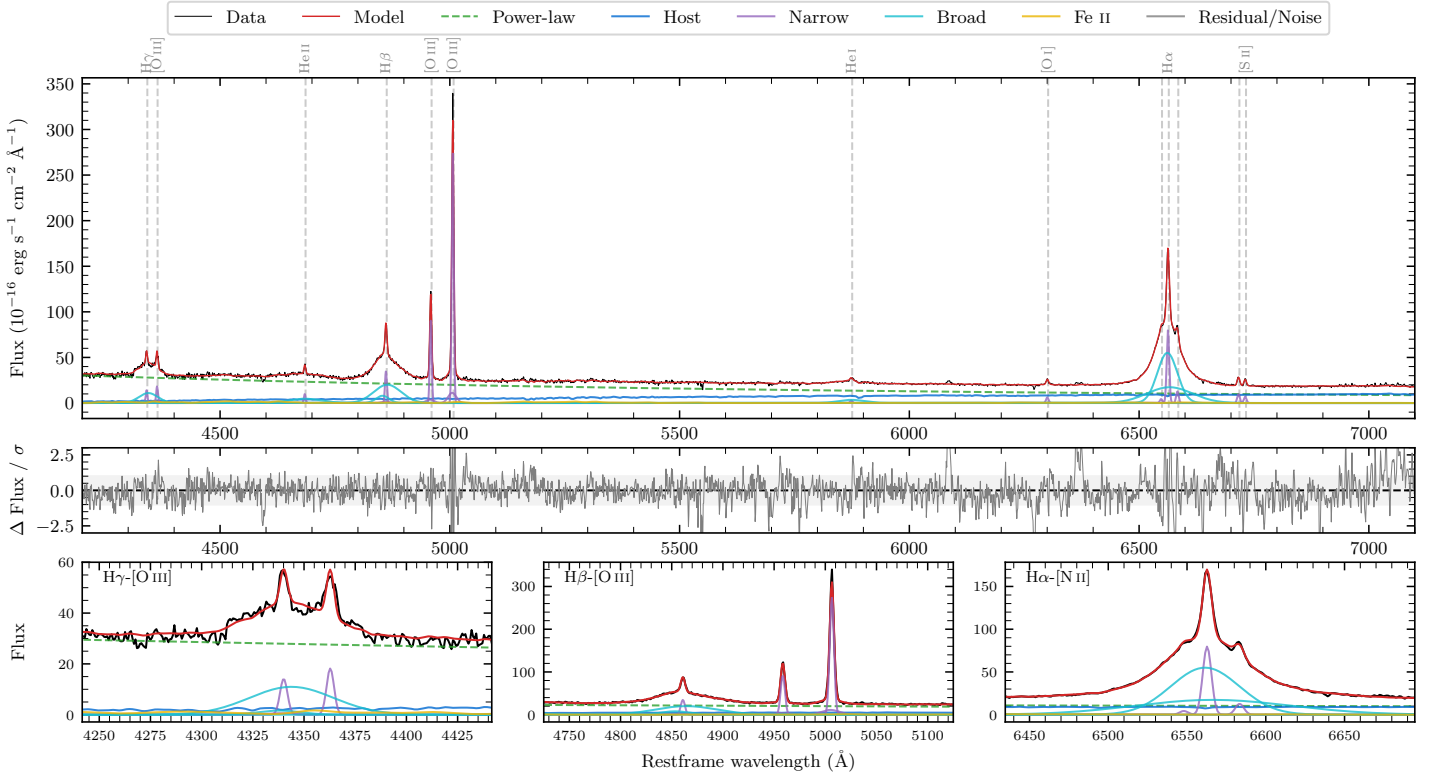
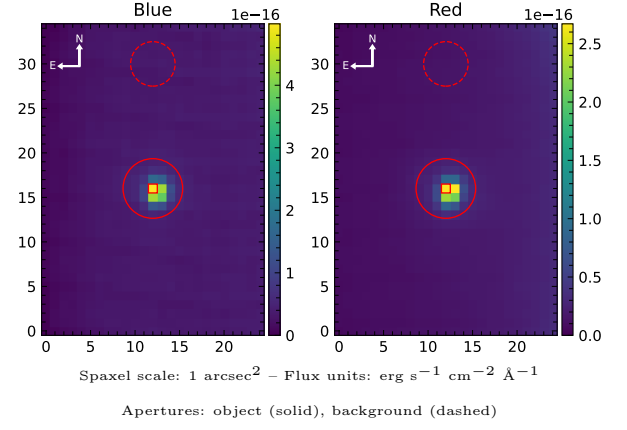


# LEDA 45913

Spectrum ID	107196837_sp1	Spectrum type	Sy 1.5
Alt name	g1313058-110742	Quality flag	good
$z$	0.0340	AGN reference	6dFGS
RA, Dec	198.2741, -11.1284	MW $E(B - V)$	0.044
MJD	60018.67	Power law $\alpha_\nu$	$0.40 \pm 0.06$
SNR/ $\text{\AA}$ B/R	15.4/27.4	$\log L_{5100, \text{AGN}}$	$43.42 \pm 0.01$
Obs airmass	1.07	$\log H\beta_{\text{Br}}/[\text{O III}]$	$0.02 \pm 0.01$
SMSS ID	107196837	$\log M_{L5100}/M_\odot$	$7.78 \pm 0.03$
Neighbour	None $< 15''$	$\log M_{\text{H}\alpha}/M_\odot$	$7.47 \pm 0.02$
SMSS $\langle r_6'' \text{ap} \rangle$	$15.47 \pm 0.03$	$\log M_{\text{H}\beta}/M_\odot$	$7.82 \pm 0.03$
2MASS $K_{\text{ext}}$	$12.31 \pm 0.08$	$\log M_{[\text{O III}]} / M_\odot$	$7.97 \pm 0.02$



## Emission Line Measurements

Line	$\log L$ ( $\text{erg s}^{-1}$ )	FWHM ( $\text{km s}^{-1}$ )	$\sigma$ ( $\text{km s}^{-1}$ )	EW ( $\text{\AA}$ )
H $\gamma$ Narrow	$40.33 \pm 0.06$	$305 \pm 62$	$229 \pm 28$	$2.78 \pm 0.35$
<b>H<math>\gamma</math> Broad</b>	<b><math>41.24 \pm 0.02</math></b>	<b><math>3237 \pm 188</math></b>	<b><math>1178 \pm 46</math></b>	<b><math>22.44 \pm 0.62</math></b>
[O III] 4364	$40.37 \pm 0.04$	$301 \pm 62$	$125 \pm 25$	$3.12 \pm 0.18$
He II Narrow	$40.14 \pm 0.05$	$301 \pm 62$	$125 \pm 25$	$2.15 \pm 0.18$
<b>He II Broad</b>	<b><math>41.08 \pm 0.03</math></b>	<b><math>5436 \pm 178</math></b>	<b><math>2308 \pm 75</math></b>	<b><math>18.99 \pm 0.74</math></b>
H $\beta$ Narrow	$40.76 \pm 0.02$	$305 \pm 62$	$229 \pm 28$	$10.02 \pm 0.35$
<b>H<math>\beta</math> Broad</b>	<b><math>41.70 \pm 0.01</math></b>	<b><math>3659 \pm 95</math></b>	<b><math>1474 \pm 33</math></b>	<b><math>86.41 \pm 0.70</math></b>
[O III] 5007	$41.68 \pm 0.01$	$305 \pm 62$	$229 \pm 28$	$87.70 \pm 0.39$
He I Narrow	$39.70 \pm 0.08$	$301 \pm 62$	$125 \pm 25$	$1.35 \pm 0.14$
<b>He I Broad</b>	<b><math>40.83 \pm 0.02</math></b>	<b><math>3296 \pm 152</math></b>	<b><math>1399 \pm 64</math></b>	<b><math>18.32 \pm 0.47</math></b>
[O I] 6300	$40.06 \pm 0.03$	$301 \pm 62$	$125 \pm 25$	$3.69 \pm 0.16$
H $\alpha$ Narrow	$41.19 \pm 0.01$	$301 \pm 62$	$125 \pm 25$	$54.68 \pm 0.26$
<b>H<math>\alpha</math> Broad</b>	<b><math>42.16 \pm 0.01</math></b>	<b><math>2708 \pm 64</math></b>	<b><math>1205 \pm 25</math></b>	<b><math>512.71 \pm 0.85</math></b>
[N II] 6585	$40.39 \pm 0.02$	$301 \pm 62$	$125 \pm 25$	$8.82 \pm 0.22$
[S II] 6718	$40.29 \pm 0.02$	$301 \pm 62$	$125 \pm 25$	$7.27 \pm 0.20$
[S II] 6732	$40.15 \pm 0.02$	$301 \pm 62$	$125 \pm 25$	$5.25 \pm 0.19$

## Emission Summary

H $\alpha$ broad SNR	41.60
H $\beta$ broad SNR	15.62
H $\gamma$ broad SNR	7.05
AGN frac	0.80
Host frac	0.20
$\log L_{5100, \text{Host}}$	42.83
Fe II/H $\beta$	0.22
Fe II/[O III]	0.23

## Quality Flags

spurious_hab/hbb	0/0
15100	2
balmer	0
balmer_snr	0
hb_width	0
balmer_width	0