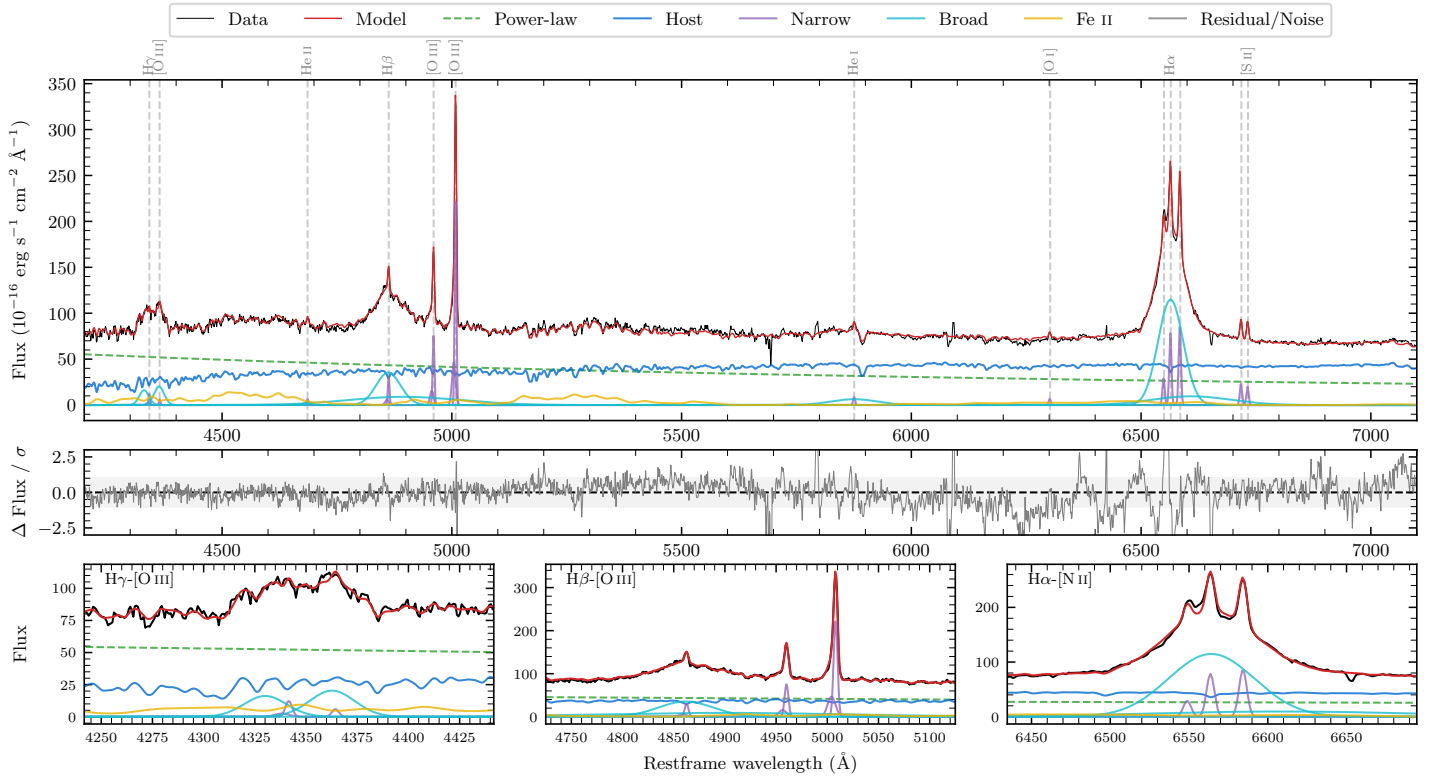
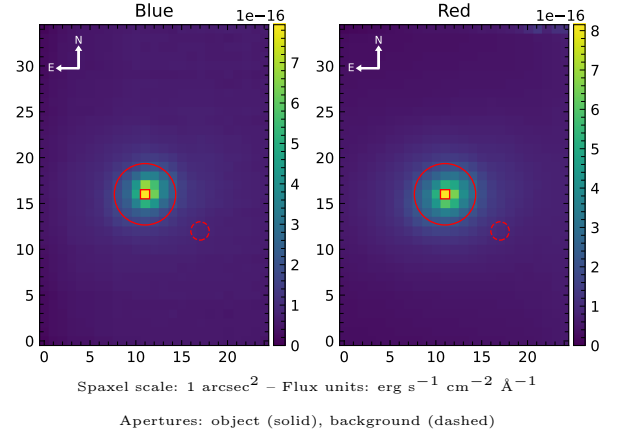


NGC 4593

Spectrum ID	106851531_sp1	Spectrum type	Sy 1.5
Alt name	NGC4593	Quality flag	good
z	0.0083	AGN reference	S7
RA, Dec	189.9142, -5.3442	MW $E(B - V)$	0.021
MJD	60755.61	Power law α_ν	-0.34 ± 0.12
SNR/ \AA B/R	18.4/34.5	$\log L_{5100, \text{AGN}}$	42.50 ± 0.02
Obs airmass	1.11	$\log H\beta_{\text{Br}}/[\text{O III}]$	0.19 ± 0.18
SMSS ID	106851531	$\log M_{L5100}/M_\odot$	7.43 ± 0.03
Neighbour	7.7", 2173547842	$\log M_{\text{H}\alpha}/M_\odot$	6.98 ± 0.04
SMSS $\langle r_{6''}^{\text{ap}} \rangle$	13.86 ± 0.17	$\log M_{\text{H}\beta}/M_\odot$	7.36 ± 0.11
2MASS K_{ext}	7.99 ± 0.03	$\log M_{[\text{O III}]} / M_\odot$	7.38 ± 0.05



Emission Line Measurements

Line	$\log L$ (erg s ⁻¹)	FWHM (km s ⁻¹)	σ (km s ⁻¹)	EW (Å)
H γ Narrow	39.05 ± 0.16	296 ± 63	190 ± 25	1.39 ± 0.34
Hγ Broad	40.18 ± 0.04	3811 ± 153	1295 ± 29	18.95 ± 0.74
[O III] 4364	38.58 ± 0.34	271 ± 63	114 ± 25	0.48 ± 0.24
He II Narrow	38.64 ± 0.26	271 ± 63	114 ± 25	0.62 ± 0.20
He II Broad	—	—	—	—
H β Narrow	39.49 ± 0.04	296 ± 63	190 ± 25	4.64 ± 0.30
Hβ Broad	$40.56^{+0.34}_{-0.02}$	3865 ± 38	1438 ± 25	54.94 ± 0.85
[O III] 5007	40.37 ± 0.01	296 ± 63	190 ± 25	37.03 ± 0.33
He I Narrow	38.88 ± 0.08	271 ± 63	114 ± 25	1.56 ± 0.17
He I Broad	40.09 ± 0.03	6050 ± 72	2569 ± 29	25.63 ± 0.87
[O I] 6300	38.81 ± 0.08	271 ± 63	114 ± 25	1.49 ± 0.17
H α Narrow	39.88 ± 0.01	271 ± 63	114 ± 25	18.62 ± 0.24
Hα Broad	41.18 ± 0.01	3078 ± 64	1372 ± 25	379.42 ± 1.15
[N II] 6585	39.92 ± 0.01	271 ± 63	114 ± 25	20.54 ± 0.23
[S II] 6718	39.36 ± 0.02	271 ± 63	114 ± 25	5.88 ± 0.19
[S II] 6732	39.29 ± 0.03	271 ± 63	114 ± 25	5.09 ± 0.20

Emission Summary

H α broad SNR	26.14
H β broad SNR	7.52
H γ broad SNR	4.38
AGN frac	0.54
Host frac	0.46
$\log L_{5100, \text{Host}}$	42.43
Fe II/H β	—
Fe II/[O III]	—

Quality Flags

spurious_hab/hbb	0/2
15100	0
balmer	0
balmer_snr	0
hb_width	0
balmer_width	0