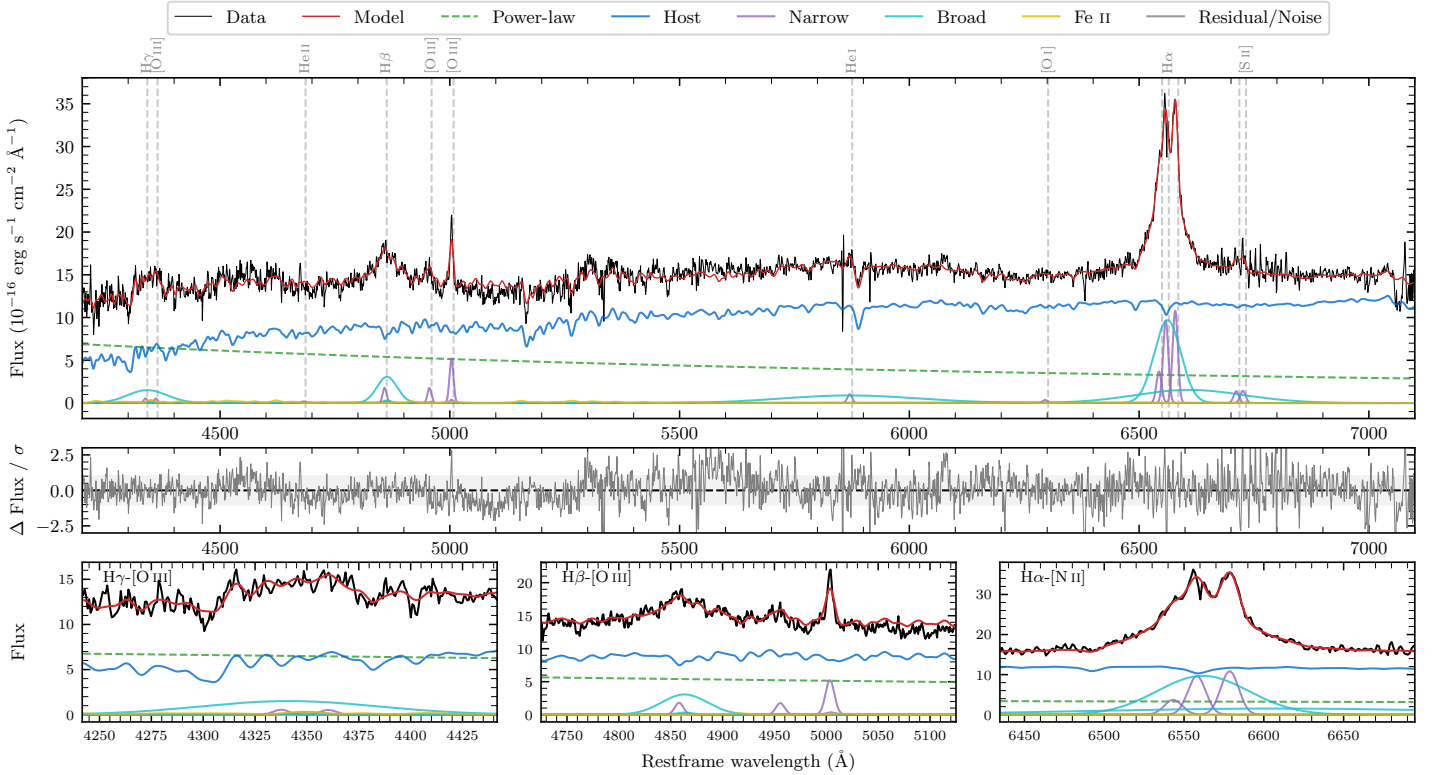
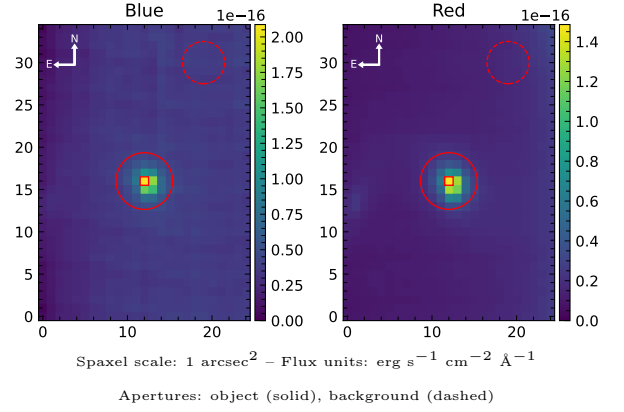


LEDA 183344

Spectrum ID	106317766_sp1	Spectrum type	Sy 1.2
Alt name	g1251559-122438	Quality flag	good
z	0.0751	AGN reference	6dFGS
RA, Dec	192.9830, -12.4106	MW $E(B - V)$	0.033
MJD	60018.64	Power law α_ν	-0.33 ± 0.22
SNR/ \AA B/R	13.9/26.5	$\log L_{5100, \text{AGN}}$	43.56 ± 0.03
Obs airmass	1.06	$\log H\beta_{\text{Br}}/[\text{O III}]$	0.46 ± 0.05
SMSS ID	106317766	$\log M_{L5100}/M_\odot$	7.66 ± 0.06
Neighbour	1.2", 2172823994	$\log M_{\text{H}\alpha}/M_\odot$	7.72 ± 0.02
SMSS $\langle r_6^{\text{ap}} \rangle$	16.06 ± 0.03	$\log M_{\text{H}\beta}/M_\odot$	7.52 ± 0.07
2MASS K_{ext}	11.75 ± 0.12	$\log M_{[\text{O III}]} / M_\odot$	7.45 ± 0.07



Emission Line Measurements

Line	$\log L$ (erg s^{-1})	FWHM (km s^{-1})	σ (km s^{-1})	EW (\AA)
H γ Narrow	39.97 ± 0.37	613 ± 63	260 ± 25	0.93 ± 0.57
Hγ Broad	41.41 ± 0.07	6058 ± 803	2513 ± 45	27.76 ± 2.05
[O III] 4364	39.88 ± 0.41	610 ± 63	258 ± 25	0.83 ± 0.56
He II Narrow	—	—	—	—
He II Broad	—	—	—	—
H β Narrow	40.52 ± 0.14	613 ± 63	260 ± 25	4.06 ± 0.62
Hβ Broad	41.44 ± 0.04	2966 ± 206	1156 ± 29	35.22 ± 1.41
[O III] 5007	40.98 ± 0.03	613 ± 63	260 ± 25	12.75 ± 0.64
He I Narrow	40.30 ± 0.11	610 ± 63	258 ± 25	3.57 ± 0.61
He I Broad	41.70 ± 0.04	17661 ± 62	7500 ± 25	89.85 ± 3.29
[O I] 6300	39.88 ± 0.26	610 ± 63	258 ± 25	1.52 ± 0.57
H α Narrow	41.32 ± 0.02	610 ± 63	258 ± 25	44.85 ± 0.75
Hα Broad	42.25 ± 0.01	3409 ± 70	2132 ± 48	381.76 ± 3.77
[N II] 6585	41.37 ± 0.02	610 ± 63	258 ± 25	50.81 ± 0.74
[S II] 6718	40.49 ± 0.08	610 ± 63	258 ± 25	6.84 ± 0.83
[S II] 6732	40.50 ± 0.10	610 ± 63	258 ± 25	7.07 ± 0.85

Emission Summary

H α broad SNR	11.25
H β broad SNR	3.54
H γ broad SNR	1.88
AGN frac	0.36
Host frac	0.64
$\log L_{5100, \text{Host}}$	43.80
Fe II/H β	0.29
Fe II/[O III]	0.85

Quality Flags

spurious_hab/hbb	0/0
15100	1
balmer	0
balmer_snr	1
hb_width	0
balmer_width	2