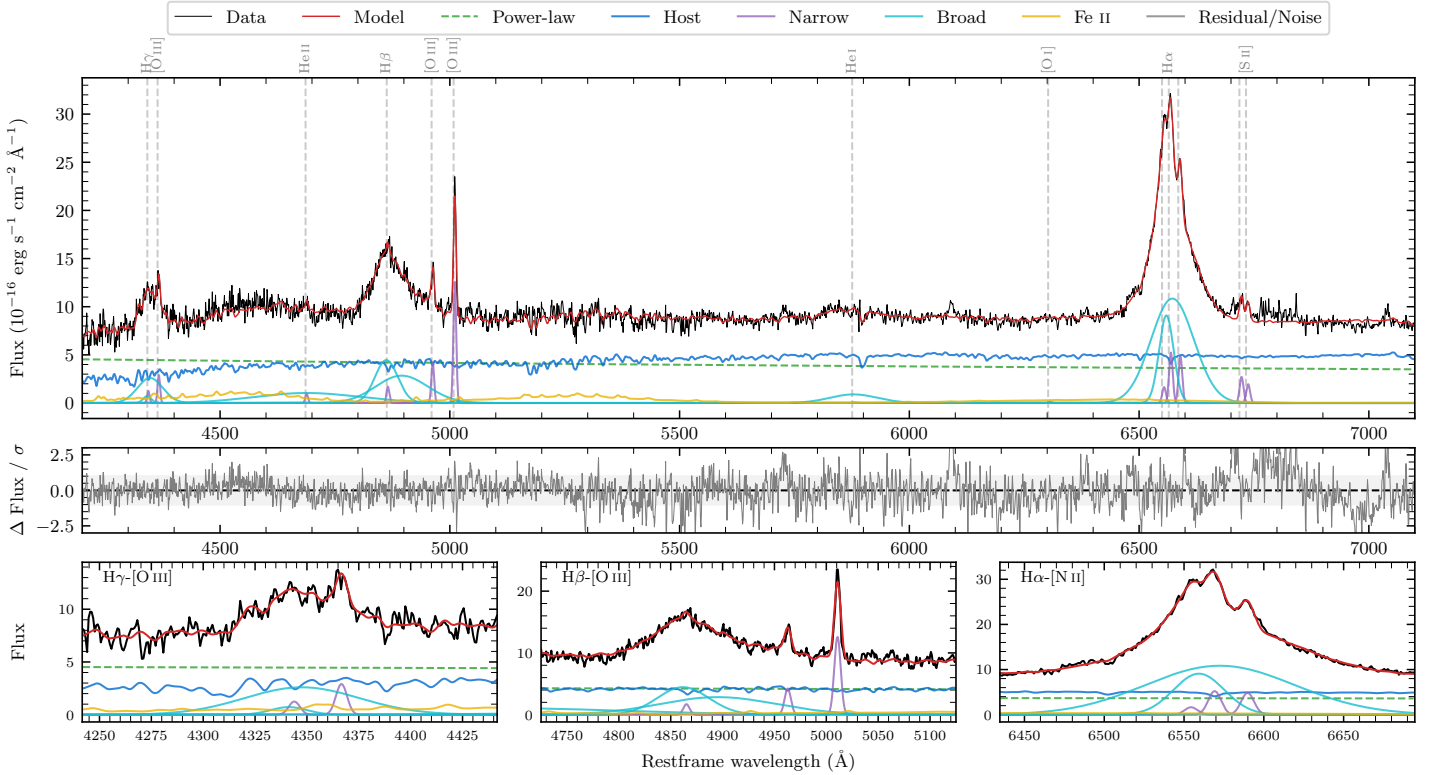
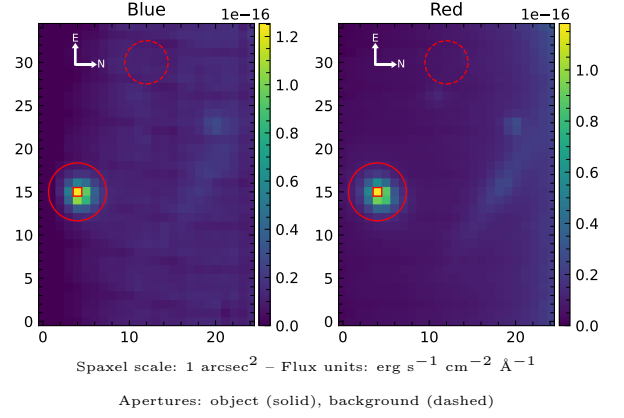


# CTS 97

|  |                    |  |                  |
|--|--------------------|--|------------------|
| Spectrum ID                              | 105971684_sp1      | Spectrum type                            | Sy 1.0           |
| Alt name                                 | g1219350-135715    | Quality flag                             | good             |
| $z$                                      | 0.0702             | AGN reference                            | 6dFGS            |
| RA, Dec                                  | 184.8959, -13.9543 | MW $E(B - V)$                            | 0.054            |
| MJD                                      | 60019.58           | Power law $\alpha_\nu$                   | $-1.50 \pm 0.30$ |
| SNR/ $\text{\AA}$ B/R                    | 9.8/23.1           | $\log L_{5100, \text{AGN}}$              | $43.39 \pm 0.04$ |
| Obs airmass                              | 1.07               | $\log H\beta_{\text{Br}}/[\text{O III}]$ | $0.83 \pm 0.02$  |
| SMSS ID                                  | 105971684          | $\log M_{L5100}/M_\odot$                 | $8.02 \pm 0.04$  |
| Neighbour                                | 13.3", 105971686   | $\log M_{H\alpha}/M_\odot$               | $7.65 \pm 0.03$  |
| SMSS $\langle r_6''_{\text{ap}} \rangle$ | $15.98 \pm 0.06$   | $\log M_{H\beta}/M_\odot$                | $8.18 \pm 0.04$  |
| 2MASS $K_{\text{ext}}$                   | $12.45 \pm 0.08$   | $\log M_{[\text{O III}]} / M_\odot$      | $7.94 \pm 0.04$  |



## Emission Line Measurements

| Line                              | $\log L$ ( $\text{erg s}^{-1}$ )   | FWHM ( $\text{km s}^{-1}$ )       | $\sigma$ ( $\text{km s}^{-1}$ ) | EW ( $\text{\AA}$ )                 |
|-----------------------------------|------------------------------------|-----------------------------------|---------------------------------|-------------------------------------|
| H $\gamma$ Narrow                 | $40.05 \pm 0.28$                   | $438 \pm 64$                      | $188 \pm 26$                    | $2.07 \pm 0.78$                     |
| <b>H<math>\gamma</math> Broad</b> | <b><math>41.40 \pm 0.04</math></b> | <b><math>3748 \pm 581</math></b>  | <b><math>1554 \pm 62</math></b> | <b><math>46.91 \pm 2.32</math></b>  |
| [O III] 4364                      | $40.39 \pm 0.11$                   | $433 \pm 64$                      | $183 \pm 26$                    | $4.70 \pm 0.70$                     |
| He II Narrow                      | $39.96 \pm 0.23$                   | $433 \pm 64$                      | $183 \pm 26$                    | $1.79 \pm 0.61$                     |
| <b>He II Broad</b>                | <b><math>41.58 \pm 0.04</math></b> | <b><math>17356 \pm 131</math></b> | <b><math>7371 \pm 55</math></b> | <b><math>75.15 \pm 4.30</math></b>  |
| H $\beta$ Narrow                  | $40.23 \pm 0.14$                   | $438 \pm 64$                      | $188 \pm 26$                    | $3.35 \pm 0.69$                     |
| <b>H<math>\beta</math> Broad</b>  | <b><math>41.93 \pm 0.01</math></b> | <b><math>4888 \pm 204</math></b>  | <b><math>2294 \pm 51</math></b> | <b><math>172.78 \pm 2.83</math></b> |
| [O III] 5007                      | $41.11 \pm 0.02$                   | $438 \pm 64$                      | $188 \pm 26$                    | $25.87 \pm 0.79$                    |
| He I Narrow                       | —                                  | —                                 | —                               | —                                   |
| <b>He I Broad</b>                 | <b><math>41.17 \pm 0.03</math></b> | <b><math>6215 \pm 175</math></b>  | <b><math>2639 \pm 74</math></b> | <b><math>32.44 \pm 1.23</math></b>  |
| [O I] 6300                        | $39.18 \pm 0.41$                   | $433 \pm 64$                      | $183 \pm 26$                    | $0.35 \pm 0.30$                     |
| H $\alpha$ Narrow                 | $40.82 \pm 0.04$                   | $433 \pm 64$                      | $183 \pm 26$                    | $15.54 \pm 0.41$                    |
| <b>H<math>\alpha</math> Broad</b> | <b><math>42.32 \pm 0.01</math></b> | <b><math>2994 \pm 76</math></b>   | <b><math>1573 \pm 25</math></b> | <b><math>480.70 \pm 1.38</math></b> |
| [N II] 6585                       | $40.79 \pm 0.03$                   | $433 \pm 64$                      | $183 \pm 26$                    | $14.45 \pm 0.39$                    |
| [S II] 6718                       | $40.55 \pm 0.04$                   | $433 \pm 64$                      | $183 \pm 26$                    | $8.36 \pm 0.45$                     |
| [S II] 6732                       | $40.41 \pm 0.04$                   | $433 \pm 64$                      | $183 \pm 26$                    | $6.04 \pm 0.43$                     |

## Emission Summary

|                              |       |
|------------------------------|-------|
| H $\alpha$ broad SNR         | 22.56 |
| H $\beta$ broad SNR          | 7.94  |
| H $\gamma$ broad SNR         | 3.84  |
| AGN frac                     | 0.49  |
| Host frac                    | 0.51  |
| $\log L_{5100, \text{Host}}$ | 43.41 |
| Fe II/H $\beta$              | 0.41  |
| Fe II/[O III]                | 2.77  |

## Quality Flags

|                  |     |
|------------------|-----|
| spurious_hab/hbb | 0/0 |
| 15100            | 1   |
| balmer           | 0   |
| balmer_snr       | 0   |
| hb_width         | 0   |
| balmer_width     | 0   |