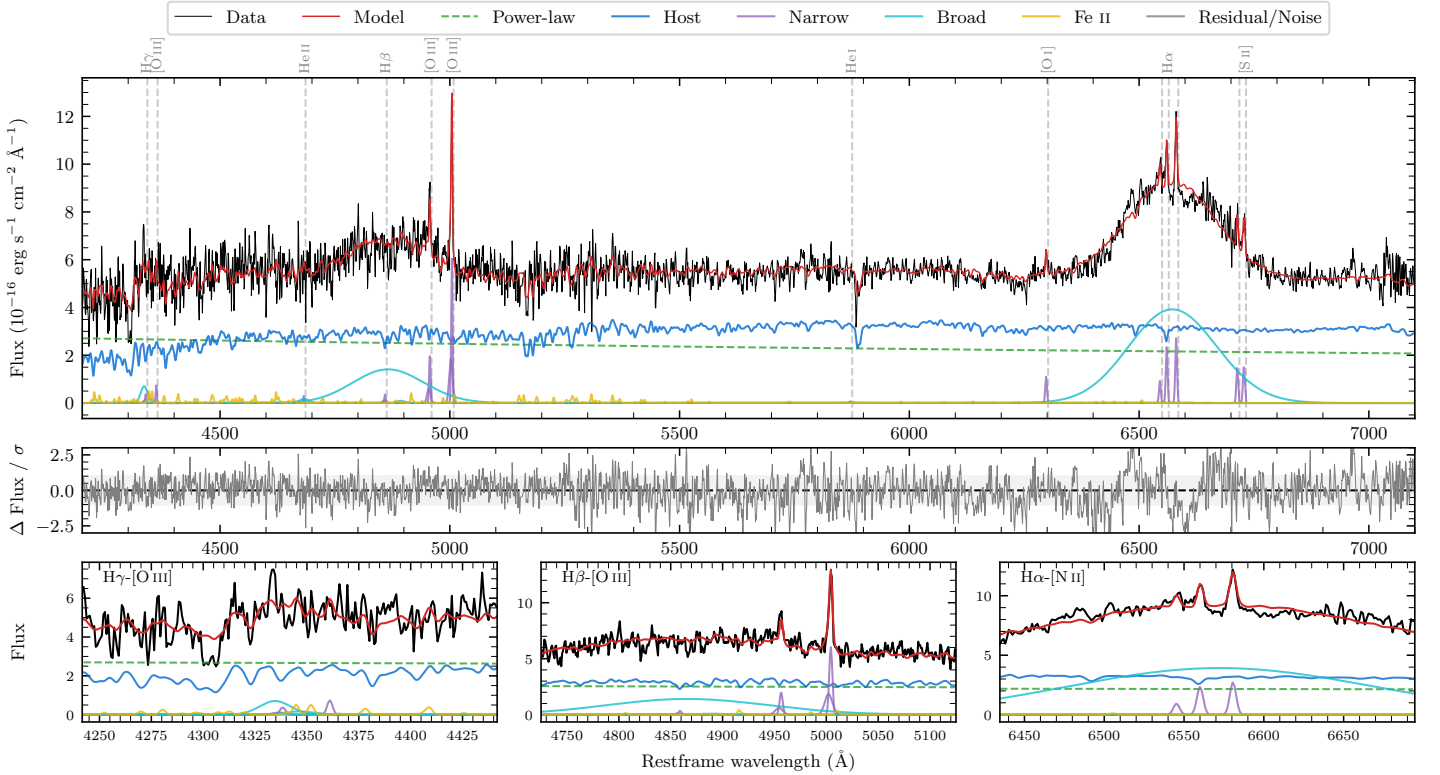
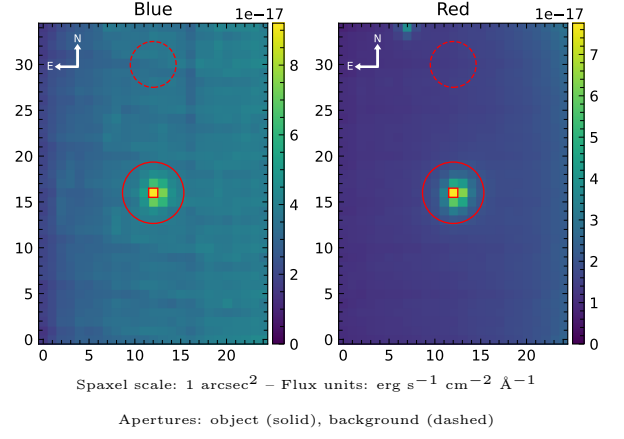


LEDA 922369

Spectrum ID	105589841_sp1	Spectrum type	Sy 1.0
Alt name	g1316092-143641	Quality flag	good
z	0.0810	AGN reference	6dFGS
RA, Dec	199.0382, -14.6115	MW $E(B - V)$	0.079
MJD	60018.68	Power law α_ν	-1.49 ± 0.22
SNR/ \AA B/R	8.0/18.2	$\log L_{5100, \text{AGN}}$	43.31 ± 0.04
Obs airmass	1.05	$\log H\beta_{\text{Br}}/[\text{O III}]$	0.85 ± 0.05
SMSS ID	105589841	$\log M_{L5100}/M_\odot$	8.70 ± 0.03
Neighbour	None $< 15''$	$\log M_{\text{H}\alpha}/M_\odot$	8.66 ± 0.01
SMSS $\langle r_6''_{\text{ap}} \rangle$	17.00 ± 0.15	$\log M_{\text{H}\beta}/M_\odot$	8.78 ± 0.03
2MASS K_{ext}	12.61 ± 0.10	$\log M_{[\text{O III}]} / M_\odot$	8.52 ± 0.05



Emission Line Measurements

Line	$\log L$ (erg s ⁻¹)	FWHM (km s ⁻¹)	σ (km s ⁻¹)	EW (Å)
H γ Narrow	–	–	–	–
Hγ Broad	40.49 ± 0.18	1354 ± 167	521 ± 46	6.55 ± 1.61
[O III] 4364	39.63 ± 0.35	215 ± 63	90 ± 25	0.99 ± 0.60
He II Narrow	–	–	–	–
He II Broad	39.91 ± 0.42	1546 ± 63	657 ± 25	1.93 ± 1.46
H β Narrow	39.61 ± 0.42	251 ± 65	169 ± 28	0.97 ± 0.90
Hβ Broad	41.69 ± 0.03	11077 ± 285	4157 ± 26	118.56 ± 4.53
[O III] 5007	40.84 ± 0.04	251 ± 65	169 ± 28	17.24 ± 0.94
He I Narrow	–	–	–	–
He I Broad	–	–	–	–
[O I] 6300	39.97 ± 0.09	215 ± 63	90 ± 25	2.57 ± 0.30
H α Narrow	40.31 ± 0.05	215 ± 63	90 ± 25	5.80 ± 0.33
Hα Broad	42.22 ± 0.01	10245 ± 68	3814 ± 25	471.10 ± 2.91
[N II] 6585	40.38 ± 0.04	215 ± 63	90 ± 25	6.77 ± 0.33
[S II] 6718	40.12 ± 0.07	215 ± 63	90 ± 25	3.81 ± 0.41
[S II] 6732	40.14 ± 0.09	215 ± 63	90 ± 25	3.97 ± 0.43

Emission Summary

H α broad SNR	6.08
H β broad SNR	2.29
H γ broad SNR	1.26
AGN frac	0.47
Host frac	0.53
$\log L_{5100, \text{Host}}$	43.37
Fe II/H β	0.09
Fe II/[O III]	0.64

Quality Flags

spurious_hab/hbb	0/0
15100	1
balmer	1
balmer_snr	1
hb_width	0
balmer_width	0