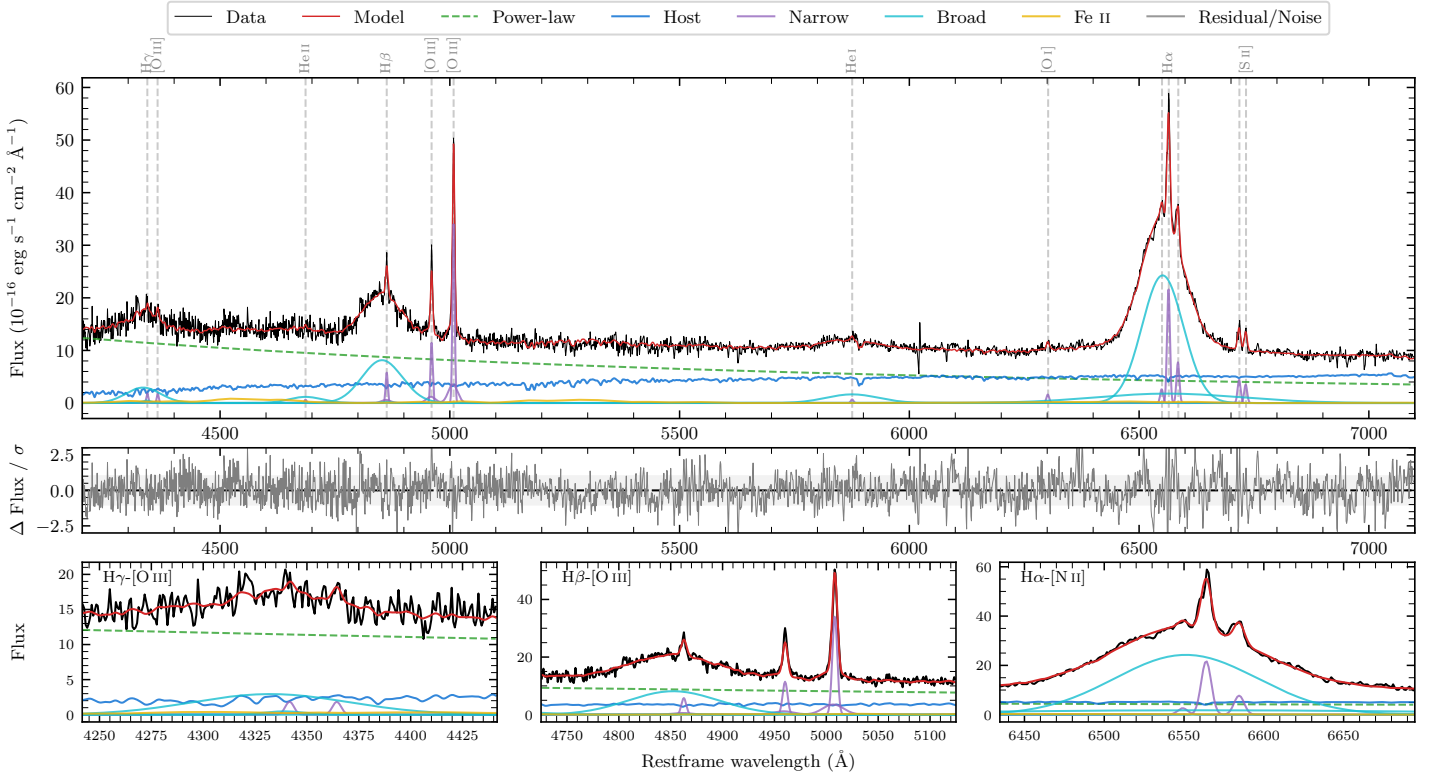
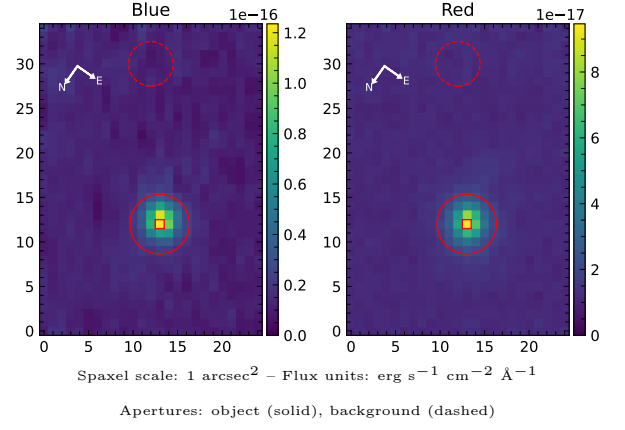


LEDA 83771

Spectrum ID	105543953_sp1	Spectrum type	Sy 1.2
Alt name	g1303222-134133	Quality flag	good
z	0.0468	AGN reference	6dFGS
RA, Dec	195.8426, -13.6926	MW $E(B - V)$	0.040
MJD	61090.71	Power law α_ν	0.40 ± 0.08
SNR/ \AA B/R	11.7/18.7	$\log L_{5100, \text{AGN}}$	43.31 ± 0.02
Obs airmass	1.05	$\log H\beta_{\text{Br}}/[\text{O III}]$	0.49 ± 0.02
SMSS ID	105543953	$\log M_{L5100}/M_\odot$	8.20 ± 0.02
Neighbour	None $< 15''$	$\log M_{\text{H}\alpha}/M_\odot$	8.08 ± 0.02
SMSS $\langle r_6 \rangle_{\text{ap}}$	15.24 ± 0.09	$\log M_{\text{H}\beta}/M_\odot$	8.29 ± 0.03
2MASS K_{ext}	11.73 ± 0.06	$\log M_{[\text{O III}]} / M_\odot$	8.20 ± 0.03



Emission Line Measurements

Line	$\log L$ (erg s ⁻¹)	FWHM (km s ⁻¹)	σ (km s ⁻¹)	EW (Å)
H γ Narrow	39.87 ± 0.23	364 ± 63	353 ± 29	1.27 ± 0.55
Hγ Broad	41.20 ± 0.04	5480 ± 591	2196 ± 71	26.35 ± 1.26
[O III] 4364	39.71 ± 0.23	340 ± 63	144 ± 25	0.89 ± 0.28
He II Narrow	39.30 ± 0.38	340 ± 63	144 ± 25	0.41 ± 0.27
He II Broad	40.76 ± 0.07	5461 ± 139	2319 ± 58	11.68 ± 1.09
H β Narrow	40.42 ± 0.05	364 ± 63	353 ± 28	5.82 ± 0.58
Hβ Broad	41.69 ± 0.01	6269 ± 123	2341 ± 31	107.47 ± 1.28
[O III] 5007	41.20 ± 0.01	364 ± 63	354 ± 28	37.94 ± 0.61
He I Narrow	39.42 ± 0.22	340 ± 63	144 ± 25	0.92 ± 0.27
He I Broad	41.10 ± 0.03	6828 ± 81	2899 ± 33	44.41 ± 1.47
[O I] 6300	39.82 ± 0.08	340 ± 63	144 ± 25	2.74 ± 0.31
H α Narrow	40.97 ± 0.01	340 ± 63	144 ± 25	42.31 ± 0.58
Hα Broad	42.27 ± 0.01	5054 ± 66	2264 ± 46	843.00 ± 2.74
[N II] 6585	40.52 ± 0.03	340 ± 63	144 ± 25	15.21 ± 0.69
[S II] 6718	40.28 ± 0.03	340 ± 63	144 ± 25	9.23 ± 0.39
[S II] 6732	40.18 ± 0.04	340 ± 63	144 ± 25	7.43 ± 0.39

Emission Summary

H α broad SNR	23.69
H β broad SNR	7.62
H γ broad SNR	3.14
AGN frac	0.70
Host frac	0.30
$\log L_{5100, \text{Host}}$	42.95
Fe II/H β	0.19
Fe II/[O III]	0.58

Quality Flags

spurious_hab/hbb	0/0
15100	2
balmer	0
balmer_snr	0
hb_width	0
balmer_width	0