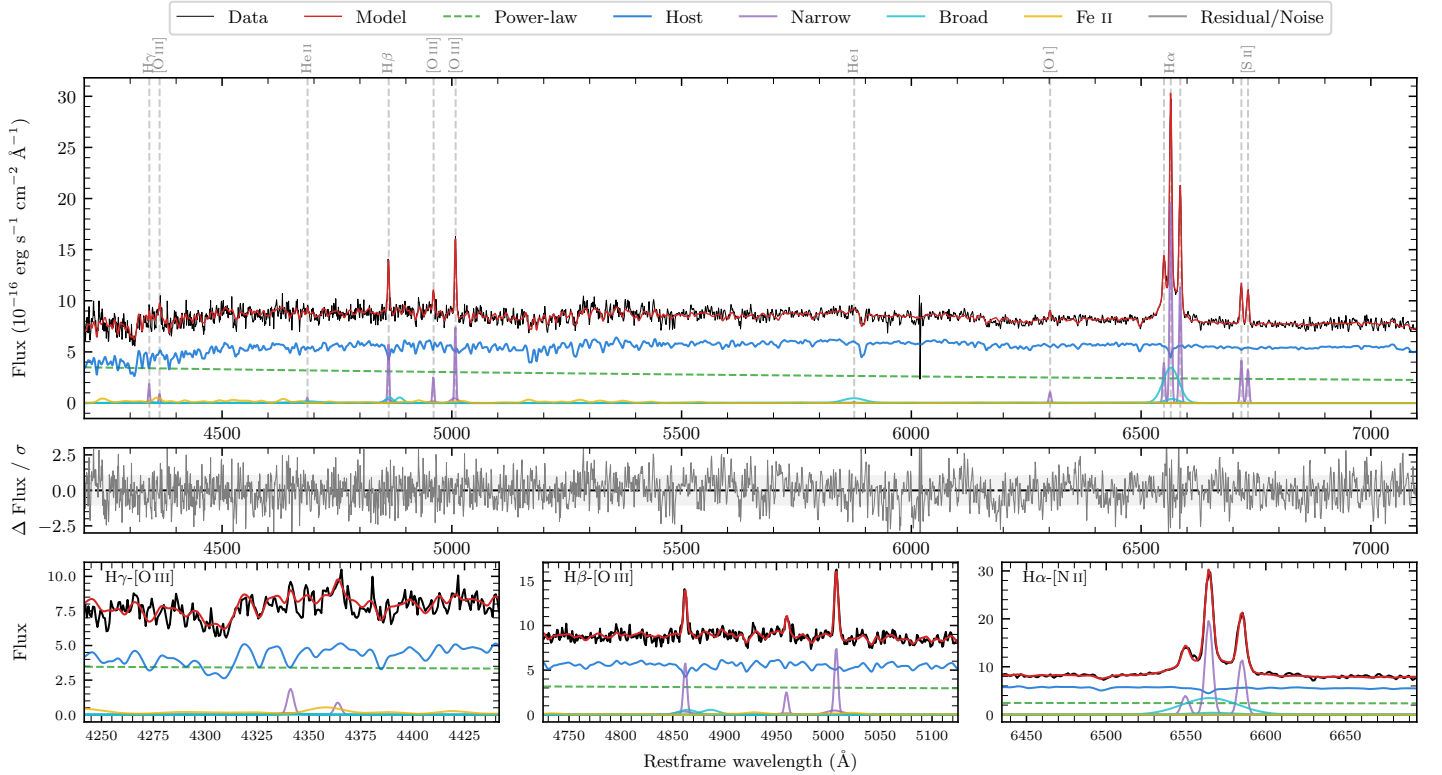
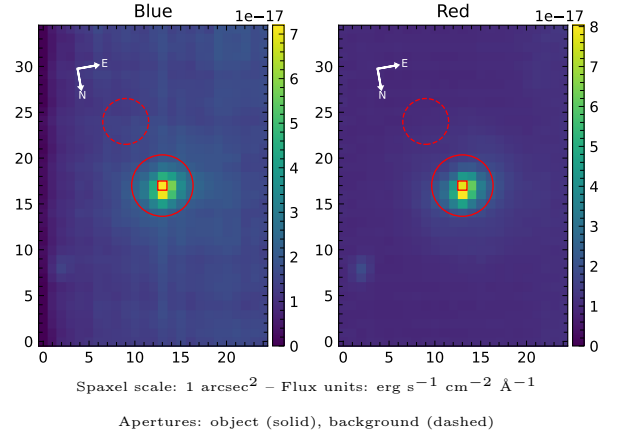


LEDA 3094239

Spectrum ID	105356591_sp1	Spectrum type	Sy 1.5
Alt name	g1304298-193613	Quality flag	good
z	0.0467	AGN reference	6dFGS
RA, Dec	196.1240, -19.6036	MW $E(B - V)$	0.073
MJD	60387.65	Power law α_ν	-1.17 ± 0.07
SNR/ \AA B/R	19.1/27.0	$\log L_{5100, \text{AGN}}$	42.89 ± 0.02
Obs airmass	1.02	$\log H\beta_{\text{Br}}/[\text{O III}]$	-0.29 ± 0.10
SMSS ID	105356591	$\log M_{L5100}/M_\odot$	7.15 ± 0.08
Neighbour	14.4", 105355785	$\log M_{\text{H}\alpha}/M_\odot$	6.39 ± 0.05
SMSS $\langle r_6''_{\text{ap}} \rangle$	16.63 ± 0.03	$\log M_{\text{H}\beta}/M_\odot$	6.69 ± 0.11
2MASS K_{ext}	12.40 ± 0.10	$\log M_{[\text{O III}]} / M_\odot$	6.93 ± 0.09



Emission Line Measurements

Line	$\log L$ (erg s^{-1})	FWHM (km s^{-1})	σ (km s^{-1})	EW (\AA)
H γ Narrow	39.70 ± 0.12	268 ± 63	246 ± 39	2.88 ± 0.64
Hγ Broad	—	—	—	—
[O III] 4364	39.27 ± 0.19	256 ± 62	107 ± 25	1.07 ± 0.29
He II Narrow	39.08 ± 0.27	256 ± 62	107 ± 25	0.74 ± 0.28
He II Broad	39.80 ± 0.23	4040 ± 64	1716 ± 26	3.80 ± 1.13
H β Narrow	40.24 ± 0.05	268 ± 63	246 ± 39	10.89 ± 0.86
Hβ Broad	40.08 ± 0.10	2303 ± 207	711 ± 28	7.61 ± 0.94
[O III] 5007	40.37 ± 0.03	268 ± 63	246 ± 39	15.01 ± 0.60
He I Narrow	—	—	—	—
He I Broad	40.17 ± 0.06	2806 ± 64	1191 ± 26	10.94 ± 0.92
[O I] 6300	39.51 ± 0.08	256 ± 62	107 ± 25	2.52 ± 0.27
H α Narrow	40.80 ± 0.01	256 ± 62	107 ± 25	50.45 ± 0.42
Hα Broad	40.95 ± 0.01	1823 ± 72	679 ± 25	71.79 ± 0.91
[N II] 6585	40.56 ± 0.01	256 ± 62	107 ± 25	29.56 ± 0.36
[S II] 6718	40.13 ± 0.02	256 ± 62	107 ± 25	11.12 ± 0.31
[S II] 6732	40.03 ± 0.03	256 ± 62	107 ± 25	8.74 ± 0.31

Emission Summary

H α broad SNR	8.51
H β broad SNR	1.49
H γ broad SNR	0.00
AGN frac	0.37
Host frac	0.63
$\log L_{5100, \text{Host}}$	43.13
Fe II/H β	2.84
Fe II/[O III]	1.47

Quality Flags

spurious_hab/hbb	0/0
15100	1
balmer	1
balmer_snr	2
hb_width	1
balmer_width	0