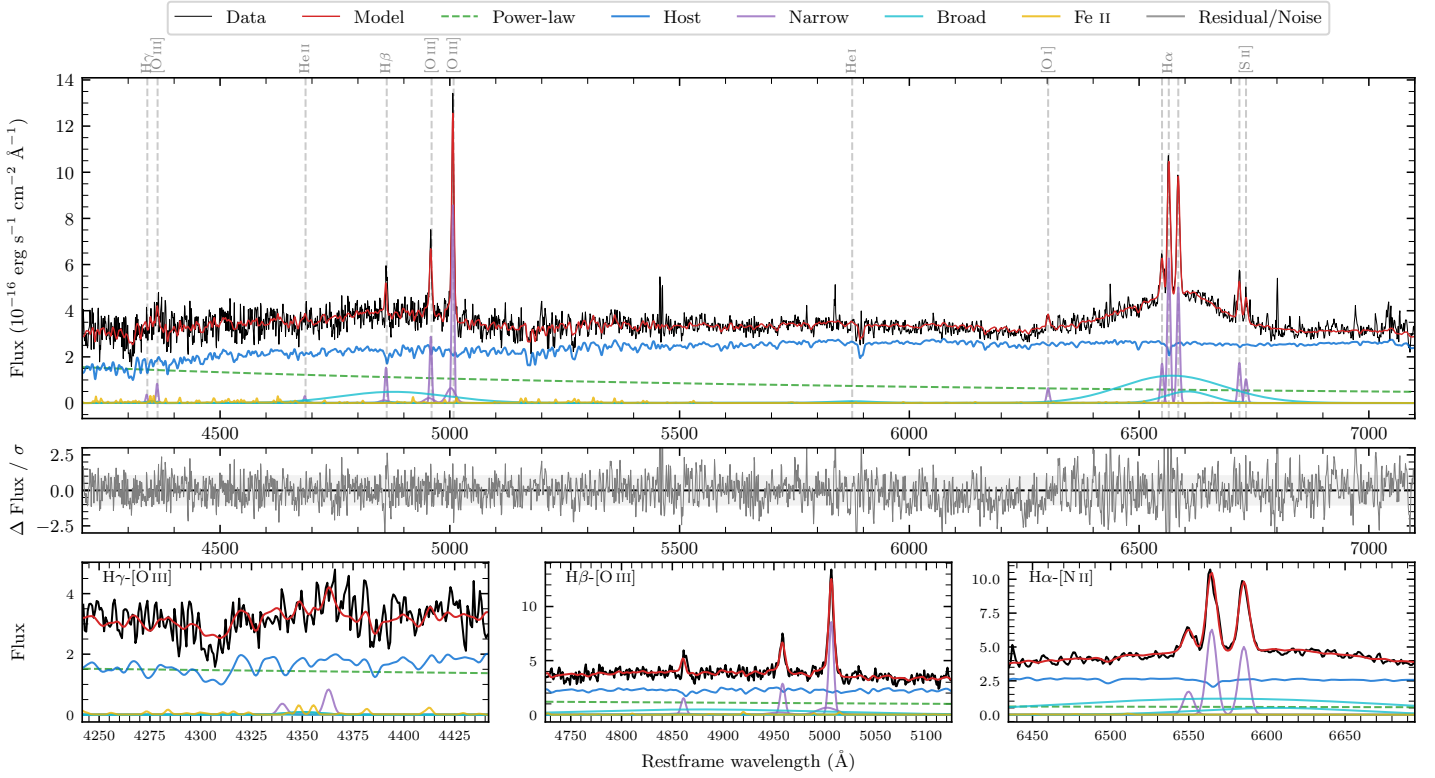
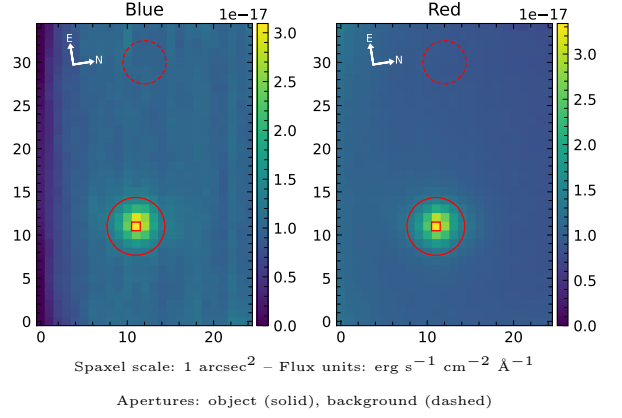


LEDA 184063

Spectrum ID	105169587_sp1	Spectrum type	Sy 1.2
Alt name	g1344330-225801	Quality flag	good
z	0.0792	AGN reference	6dFGS
RA, Dec	206.1373, -22.9671	MW $E(B - V)$	0.065
MJD	59726.48	Power law α_ν	0.22 ± 0.22
SNR/ \AA B/R	8.4/17.0	$\log L_{5100, \text{AGN}}$	42.91 ± 0.04
Obs airmass	1.01	$\log H\beta_{\text{Br}}/[\text{O III}]$	0.33 ± 0.05
SMSS ID	105169587	$\log M_{L5100}/M_\odot$	8.83 ± 0.06
Neighbour	None $< 15''$	$\log M_{\text{H}\alpha}/M_\odot$	8.37 ± 0.03
SMSS $\langle r_6''_{\text{ap}} \rangle$	16.93 ± 0.14	$\log M_{\text{H}\beta}/M_\odot$	8.95 ± 0.06
2MASS K_{ext}	13.01 ± 0.11	$\log M_{[\text{O III}]} / M_\odot$	8.93 ± 0.06



Emission Line Measurements

Line	$\log L$ (erg s^{-1})	FWHM (km s^{-1})	σ (km s^{-1})	EW (\AA)
H γ Narrow	39.63 ± 0.33	364 ± 63	310 ± 42	1.89 ± 1.56
Hγ Broad	—	—	—	—
[O III] 4364	39.88 ± 0.18	348 ± 63	147 ± 25	3.40 ± 0.89
He II Narrow	39.46 ± 0.36	348 ± 63	147 ± 25	1.52 ± 0.85
He II Broad	39.62 ± 0.42	1188 ± 64	504 ± 25	2.15 ± 1.59
H β Narrow	40.30 ± 0.07	364 ± 63	311 ± 42	11.39 ± 1.81
Hβ Broad	41.39 ± 0.04	15721 ± 921	6103 ± 76	138.45 ± 7.11
[O III] 5007	41.06 ± 0.02	364 ± 63	311 ± 42	70.01 ± 2.07
He I Narrow	—	—	—	—
He I Broad	40.23 ± 0.17	6085 ± 97	2584 ± 40	14.79 ± 3.17
[O I] 6300	39.93 ± 0.07	348 ± 63	147 ± 25	8.60 ± 0.84
H α Narrow	40.93 ± 0.01	348 ± 63	147 ± 25	95.06 ± 1.06
Hα Broad	41.82 ± 0.01	9711 ± 287	4078 ± 47	743.50 ± 7.83
[N II] 6585	40.84 ± 0.01	348 ± 63	147 ± 25	76.44 ± 1.04
[S II] 6718	40.38 ± 0.03	348 ± 63	147 ± 25	28.23 ± 1.45
[S II] 6732	40.16 ± 0.05	348 ± 63	147 ± 25	17.09 ± 1.42

Emission Summary

H α broad SNR	4.17
H β broad SNR	1.37
H γ broad SNR	0.57
AGN frac	0.32
Host frac	0.68
$\log L_{5100, \text{Host}}$	43.23
Fe II/H β	0.12
Fe II/[O III]	0.26

Quality Flags

spurious_hab/hbb	0/0
15100	1
balmer	1
balmer_snr	2
hb_width	0
balmer_width	0