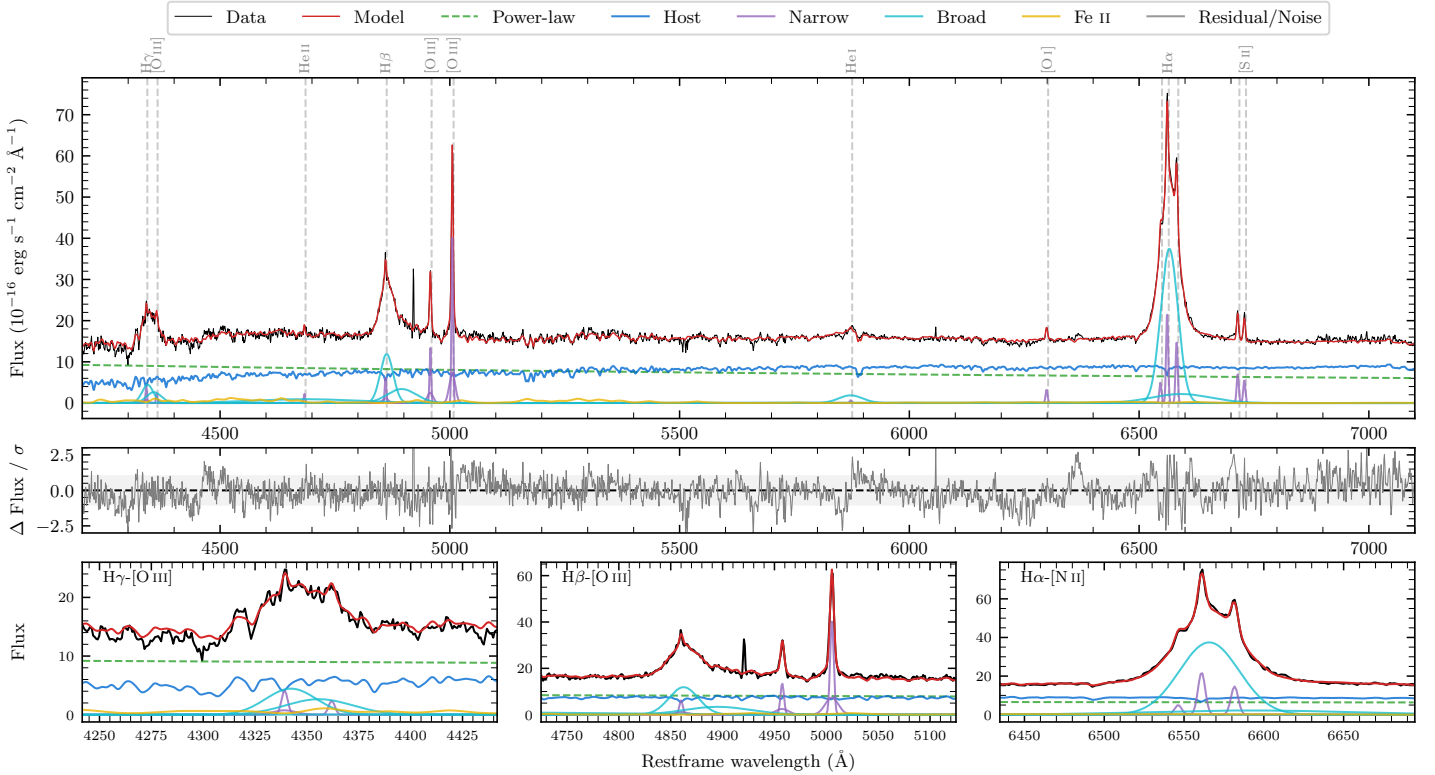
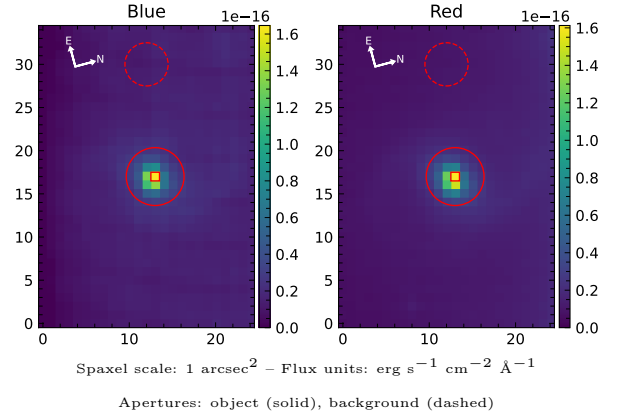


LEDA 170249

Spectrum ID	105062113_sp1	Spectrum type	Sy 1.2
Alt name	g1327127-245141	Quality flag	good
z	0.0400	AGN reference	6dFGS
RA, Dec	201.8031, -24.8613	MW $E(B - V)$	0.065
MJD	60353.74	Power law α_ν	-1.19 ± 0.19
SNR/ \AA B/R	20.0/28.8	$\log L_{5100, \text{AGN}}$	43.19 ± 0.02
Obs airmass	1.01	$\log H\beta_{\text{Br}}/[\text{O III}]$	0.37 ± 0.01
SMSS ID	105062113	$\log M_{L5100}/M_\odot$	7.30 ± 0.03
Neighbour	None $< 15''$	$\log M_{\text{H}\alpha}/M_\odot$	7.10 ± 0.03
SMSS $\langle r_6'' \text{ ap} \rangle$	16.04 ± 0.05	$\log M_{\text{H}\beta}/M_\odot$	7.32 ± 0.03
2MASS K_{ext}	11.76 ± 0.09	$\log M_{[\text{O III}]} / M_\odot$	7.28 ± 0.03



Emission Line Measurements

Line	$\log L$ (erg s^{-1})	FWHM (km s^{-1})	σ (km s^{-1})	EW (\AA)
H γ Narrow	40.02 ± 0.08	276 ± 63	256 ± 29	2.99 ± 0.39
Hγ Broad	40.98 ± 0.02	2408 ± 136	878 ± 34	28.01 ± 0.68
[O III] 4364	39.56 ± 0.15	246 ± 63	104 ± 25	1.04 ± 0.21
He II Narrow	39.56 ± 0.12	246 ± 63	104 ± 25	1.12 ± 0.19
He II Broad	41.04 ± 0.04	17656 ± 63	7498 ± 25	33.76 ± 1.77
H β Narrow	40.25 ± 0.04	276 ± 63	256 ± 29	5.59 ± 0.39
Hβ Broad	41.44 ± 0.01	2343 ± 50	1167 ± 27	87.30 ± 0.87
[O III] 5007	41.07 ± 0.01	276 ± 63	256 ± 29	37.83 ± 0.40
He I Narrow	39.14 ± 0.23	246 ± 63	104 ± 25	0.51 ± 0.17
He I Broad	40.68 ± 0.03	3097 ± 104	1315 ± 43	17.80 ± 0.62
[O I] 6300	39.85 ± 0.05	246 ± 63	104 ± 25	2.78 ± 0.19
H α Narrow	40.70 ± 0.01	246 ± 63	104 ± 25	20.14 ± 0.29
Hα Broad	41.93 ± 0.01	2087 ± 63	908 ± 26	340.80 ± 1.10
[N II] 6585	40.52 ± 0.02	246 ± 63	104 ± 25	13.51 ± 0.26
[S II] 6718	40.21 ± 0.02	246 ± 63	104 ± 25	6.65 ± 0.21
[S II] 6732	40.11 ± 0.03	246 ± 63	104 ± 25	5.35 ± 0.21

Emission Summary

H α broad SNR	46.71
H β broad SNR	16.43
H γ broad SNR	7.59
AGN frac	0.52
Host frac	0.48
$\log L_{5100, \text{Host}}$	43.16
Fe II/H β	0.34
Fe II/[O III]	0.80

Quality Flags

spurious_hab/hbb	0/0
15100	0
balmer	0
balmer_snr	0
hb_width	0
balmer_width	0