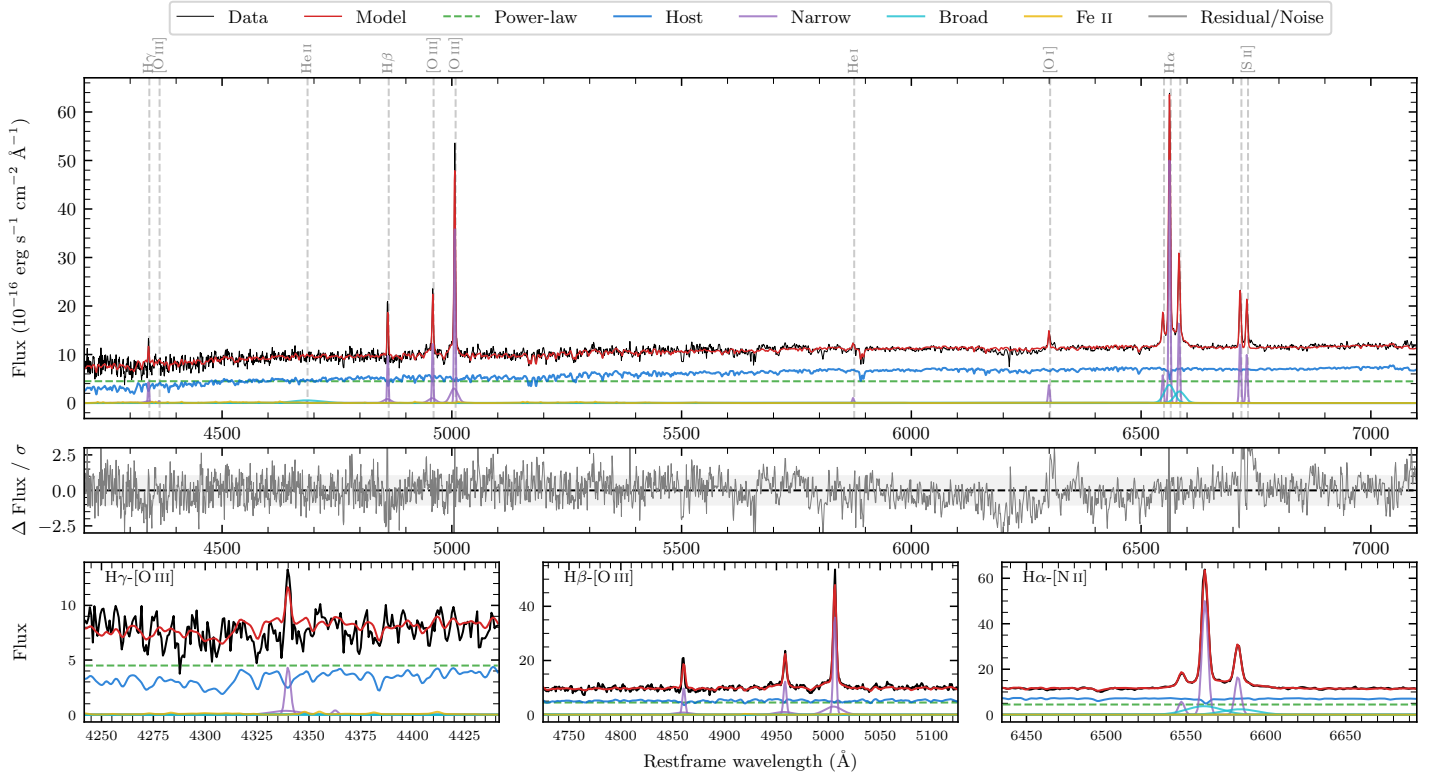
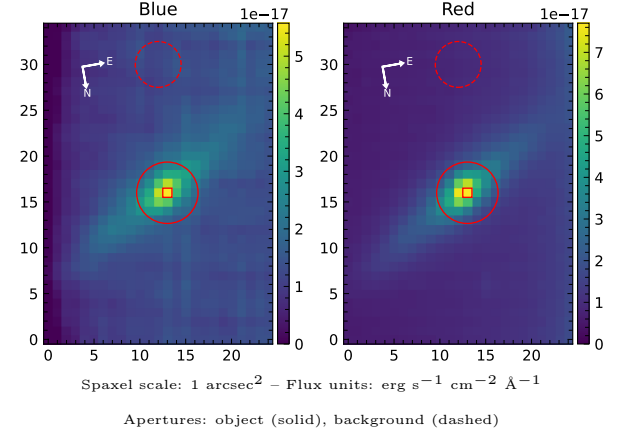


PKS 1306–241

Spectrum ID	104803889_sp1	Spectrum type	Sy 2
Alt name	g1308420–242258	Quality flag	good
z	0.0137	AGN reference	6dFGS
RA, Dec	197.1750, –24.3827	MW $E(B - V)$	0.107
MJD	60353.73	Power law α_ν	-1.99 ± 0.01
SNR/ \AA B/R	13.4/24.6	$\log L_{5100, \text{AGN}}$	42.01 ± 0.01
Obs airmass	1.01	$\log H\beta_{\text{Br}}/[\text{O III}]$	–
SMSS ID	104803889	$\log M_{L5100}/M_\odot$	–
Neighbour	7.7", 2170587230	$\log M_{\text{H}\alpha}/M_\odot$	–
SMSS $\langle r_{6'' \text{ap}} \rangle$	16.31 ± 0.04	$\log M_{\text{H}\beta}/M_\odot$	–
2MASS K_{ext}	11.78 ± 0.06	$\log M_{[\text{O III}]} / M_\odot$	–



Emission Line Measurements

Line	$\log L$ (erg s $^{-1}$)	FWHM (km s $^{-1}$)	σ (km s $^{-1}$)	EW (Å)
H γ Narrow	38.96 ± 0.08	220 ± 62	292 ± 27	4.51 ± 0.84
Hγ Broad	–	–	–	–
[O III] 4364	–	–	–	–
He II Narrow	–	–	–	–
He II Broad	39.28 ± 0.11	4528 ± 62	1923 ± 25	9.43 ± 1.32
H β Narrow	39.37 ± 0.03	220 ± 62	292 ± 27	11.58 ± 0.63
Hβ Broad	–	–	–	–
[O III] 5007	39.95 ± 0.01	220 ± 62	292 ± 27	43.92 ± 0.64
He I Narrow	38.31 ± 0.16	209 ± 62	86 ± 25	1.01 ± 0.21
He I Broad	–	–	–	–
[O I] 6300	38.88 ± 0.04	209 ± 62	86 ± 25	3.81 ± 0.21
H α Narrow	40.21 ± 0.01	209 ± 62	86 ± 25	53.80 ± 0.25
Hα Broad	–	–	–	–
[N II] 6585	39.73 ± 0.01	209 ± 62	86 ± 25	18.07 ± 0.22
[S II] 6718	39.44 ± 0.01	209 ± 62	86 ± 25	13.83 ± 0.22
[S II] 6732	39.34 ± 0.01	209 ± 62	86 ± 25	10.93 ± 0.24

Emission Summary

H α broad SNR	0.00
H β broad SNR	0.00
H γ broad SNR	0.00
AGN frac	0.48
Host frac	0.52
$\log L_{5100, \text{Host}}$	42.05
Fe II/H β	–
Fe II/[O III]	0.19

Quality Flags

spurious_hab/hbb	1/0
15100	1
balmer	2
balmer_snr	2
hb_width	2
balmer_width	2