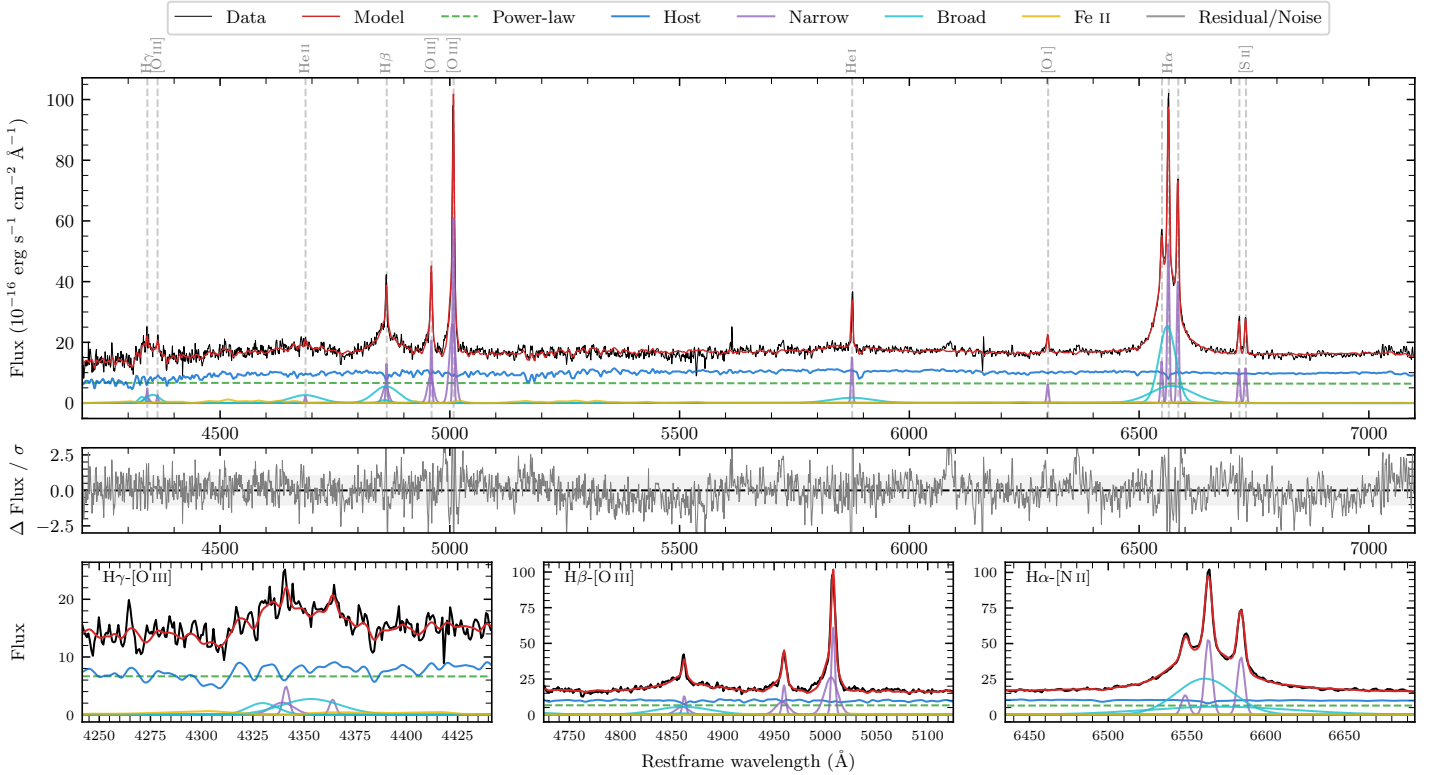
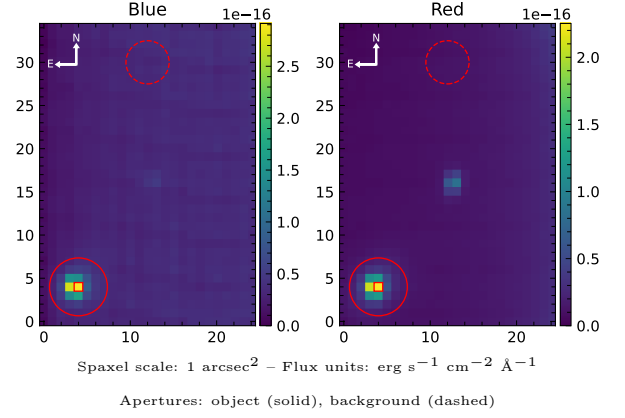


LEDA 3096158

Spectrum ID	104125016_sp1	Spectrum type	Sy 1.5
Alt name	g1233514-210345	Quality flag	good
z	0.0224	AGN reference	6dFGS
RA, Dec	188.4643, -21.0625	MW $E(B-V)$	0.052
MJD	60018.63	Power law α_ν	-1.92 ± 0.07
SNR/ \AA B/R	12.4/19.6	$\log L_{5100, \text{AGN}}$	42.59 ± 0.02
Obs airmass	1.02	$\log H\beta_{\text{Br}}/[\text{O III}]$	-0.23 ± 0.02
SMSS ID	104125016	$\log M_{L5100}/M_\odot$	7.41 ± 0.06
Neighbour	12.3", 104125012	$\log M_{\text{H}\alpha}/M_\odot$	6.77 ± 0.04
SMSS $\langle r_{6'' \text{ap}} \rangle$	15.78 ± 0.03	$\log M_{\text{H}\beta}/M_\odot$	7.35 ± 0.08
2MASS K_{ext}	12.36 ± 0.10	$\log M_{[\text{O III}]} / M_\odot$	7.58 ± 0.06



Emission Line Measurements

Line	$\log L$ (erg s ⁻¹)	FWHM (km s ⁻¹)	σ (km s ⁻¹)	EW (Å)
H γ Narrow	39.75 ± 0.09	320 ± 63	313 ± 27	7.39 ± 0.98
Hγ Broad	40.23 ± 0.07	3175 ± 283	1051 ± 81	20.76 ± 1.58
[O III] 4364	39.07 ± 0.21	249 ± 63	104 ± 25	1.54 ± 0.49
He II Narrow	39.02 ± 0.20	249 ± 63	104 ± 25	1.36 ± 0.40
He II Broad	40.41 ± 0.04	4987 ± 160	2118 ± 67	33.58 ± 1.85
H β Narrow	40.23 ± 0.03	320 ± 63	313 ± 27	22.29 ± 0.79
Hβ Broad	40.68 ± 0.02	3613 ± 234	1365 ± 62	61.66 ± 1.62
[O III] 5007	40.91 ± 0.01	320 ± 63	313 ± 27	107.56 ± 0.79
He I Narrow	39.96 ± 0.02	249 ± 63	104 ± 25	12.27 ± 0.33
He I Broad	40.38 ± 0.04	5557 ± 252	2360 ± 107	31.54 ± 1.64
[O I] 6300	39.60 ± 0.04	249 ± 63	104 ± 25	5.40 ± 0.32
H α Narrow	40.56 ± 0.01	249 ± 63	104 ± 25	48.90 ± 0.39
Hα Broad	41.33 ± 0.01	2183 ± 68	1005 ± 32	285.29 ± 1.48
[N II] 6585	40.44 ± 0.01	249 ± 63	104 ± 25	37.11 ± 0.37
[S II] 6718	39.89 ± 0.03	249 ± 63	104 ± 25	10.48 ± 0.37
[S II] 6732	39.91 ± 0.02	249 ± 63	104 ± 25	10.89 ± 0.37

Emission Summary

H α broad SNR	21.69
H β broad SNR	4.52
H γ broad SNR	2.26
AGN frac	0.42
Host frac	0.58
$\log L_{5100, \text{Host}}$	42.73
Fe II/H β	0.41
Fe II/[O III]	0.24

Quality Flags

spurious_hab/hbb	0/0
15100	1
balmer	0
balmer_snr	1
hb_width	0
balmer_width	0