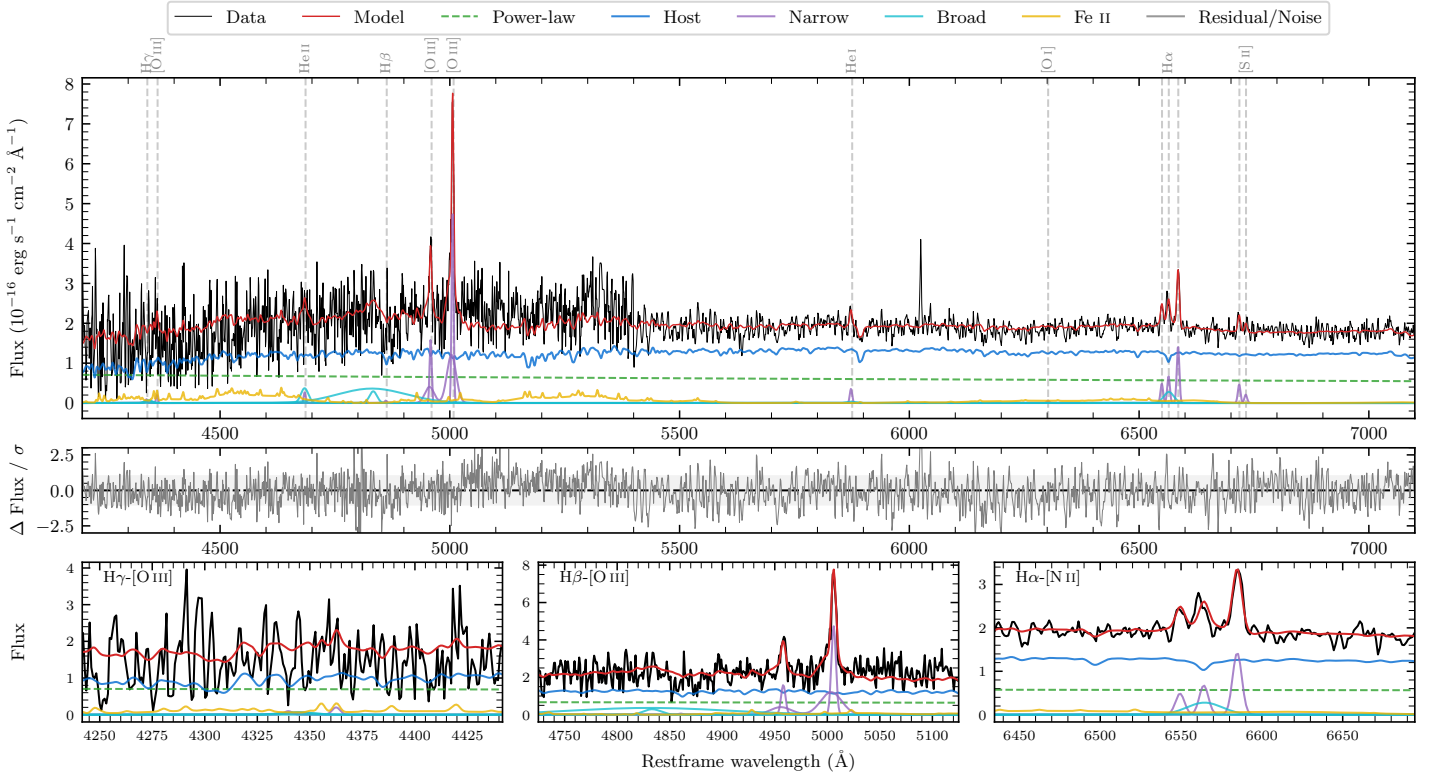
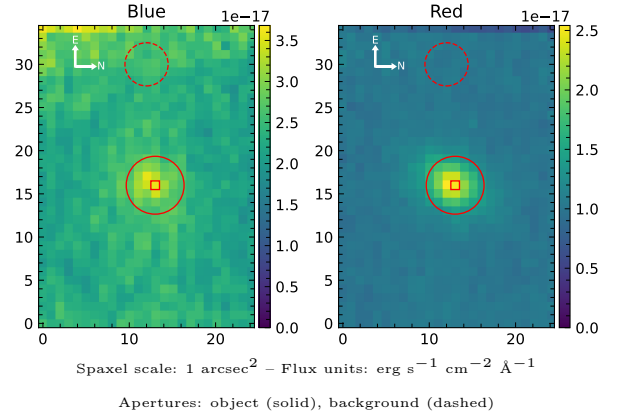


# LEDA 3794345

Spectrum ID	104108638_sp1	Spectrum type	Bad
Alt name	g1242105-222819	Quality flag	bad_all
$z$	0.0457	AGN reference	6dFGS
RA, Dec	190.5435, -22.4720	MW $E(B-V)$	0.047
MJD	61097.64	Power law $\alpha_\nu$	$-1.52 \pm 0.18$
SNR/ $\text{\AA}$ B/R	3.8/11.7	$\log L_{5100, \text{AGN}}$	$42.22 \pm 0.06$
Obs airmass	1.04	$\log H\beta_{\text{Br}}/[\text{O III}]$	—
SMSS ID	104108638	$\log M_{L5100}/M_\odot$	—
Neighbour	None $< 15''$	$\log M_{H\alpha}/M_\odot$	—
SMSS $\langle r_6''_{\text{ap}} \rangle$	$16.70 \pm 0.05$	$\log M_{H\beta}/M_\odot$	—
2MASS $K_{\text{ext}}$	$12.30 \pm 0.06$	$\log M_{[\text{O III}]} / M_\odot$	—



## Emission Line Measurements

Line	$\log L$ (erg s <sup>-1</sup> )	FWHM (km s <sup>-1</sup> )	$\sigma$ (km s <sup>-1</sup> )	EW (Å)
H $\gamma$ Narrow	—	—	—	—
<b>H<math>\gamma</math> Broad</b>	—	—	—	—
[O III] 4364	—	—	—	—
He II Narrow	$38.85 \pm 0.46$	$310 \pm 63$	$129 \pm 25$	$2.11 \pm 1.91$
<b>He II Broad</b>	<b><math>39.60 \pm 0.26</math></b>	<b><math>1218 \pm 63</math></b>	<b><math>517 \pm 25</math></b>	<b><math>11.74 \pm 4.24</math></b>
H $\beta$ Narrow	—	—	—	—
<b>H<math>\beta</math> Broad</b>	—	—	—	—
[O III] 5007	$40.47 \pm 0.03$	$359 \pm 64$	$455 \pm 33$	$90.09 \pm 4.42$
He I Narrow	$39.07 \pm 0.19$	$310 \pm 63$	$129 \pm 25$	$3.93 \pm 0.78$
<b>He I Broad</b>	<b><math>38.62 \pm 0.52</math></b>	<b><math>1206 \pm 63</math></b>	<b><math>512 \pm 25</math></b>	<b><math>1.40 \pm 1.36</math></b>
[O I] 6300	$38.35 \pm 0.43$	$310 \pm 63$	$129 \pm 25$	$0.78 \pm 0.63$
H $\alpha$ Narrow	$39.40 \pm 0.12$	$310 \pm 63$	$129 \pm 25$	$8.77 \pm 0.99$
<b>H<math>\alpha</math> Broad</b>	—	—	—	—
[N II] 6585	$39.73 \pm 0.03$	$310 \pm 63$	$129 \pm 25$	$18.68 \pm 0.87$
[S II] 6718	$39.25 \pm 0.09$	$310 \pm 63$	$129 \pm 25$	$6.25 \pm 0.72$
[S II] 6732	$38.91 \pm 0.18$	$310 \pm 63$	$129 \pm 25$	$2.85 \pm 0.71$

## Emission Summary

H $\alpha$ broad SNR	0.60
H $\beta$ broad SNR	0.00
H $\gamma$ broad SNR	0.00
AGN frac	0.36
Host frac	0.64
$\log L_{5100, \text{Host}}$	42.47
Fe II/H $\beta$	—
Fe II/[O III]	1.08

## Quality Flags

spurious_hab/hbb	0/0
15100	1
balmer	2
balmer_snr	2
hb_width	2
balmer_width	2