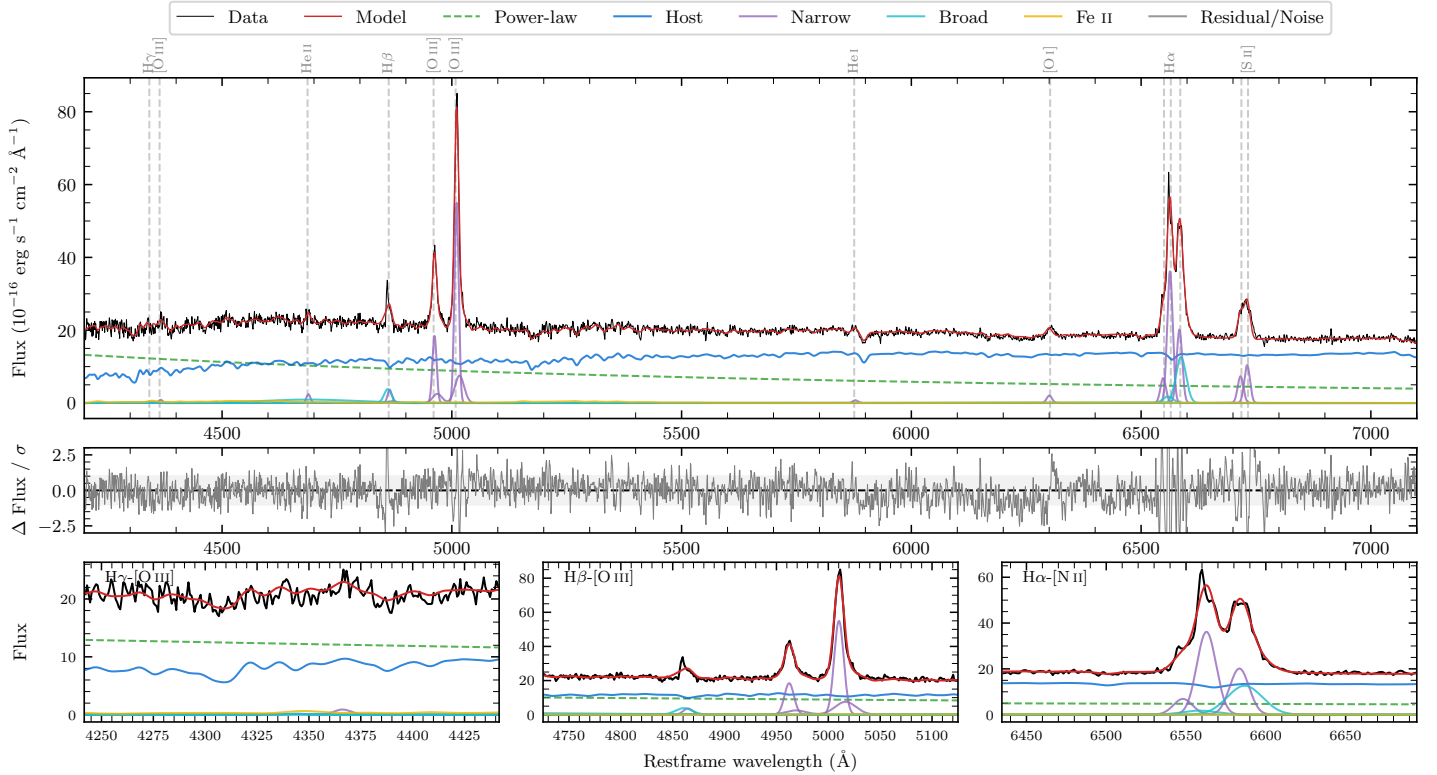
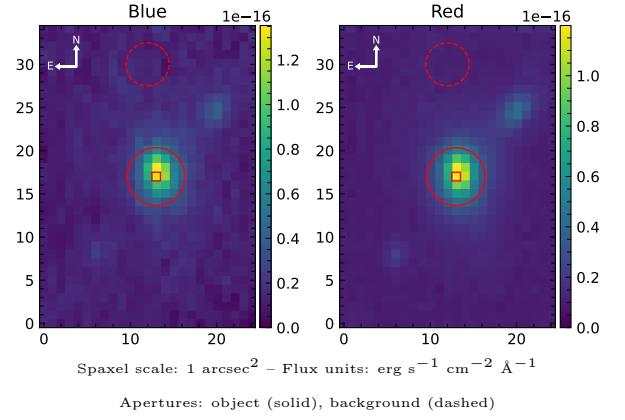


# 2MASX J12004342–2050020

Spectrum ID	103884059_sp1	Spectrum type	Sy 2
Alt name	ISZ 96	Quality flag	good
$z$	0.0624	AGN reference	PGC
RA, Dec	180.1810, $-20.8337$	MW $E(B - V)$	0.044
MJD	61068.74	Power law $\alpha_\nu$	$0.30 \pm 0.11$
SNR/ $\text{\AA}$ B/R	17.3/28.6	$\log L_{5100, \text{AGN}}$	$43.60 \pm 0.02$
Obs airmass	1.02	$\log H\beta_{\text{Br}}/[\text{O III}]$	—
SMSS ID	103884059	$\log M_{L5100}/M_\odot$	—
Neighbour	8.8", 103884060	$\log M_{\text{H}\alpha}/M_\odot$	—
SMSS $\langle r_6^{\text{ap}} \rangle$	$15.51 \pm 0.03$	$\log M_{\text{H}\beta}/M_\odot$	—
2MASS $K_{\text{ext}}$	$11.46 \pm 0.06$	$\log M_{[\text{O III}]} / M_\odot$	—



## Emission Line Measurements

Line	$\log L$ (erg s $^{-1}$ )	FWHM (km s $^{-1}$ )	$\sigma$ (km s $^{-1}$ )	EW (Å)
H $\gamma$ Narrow	—	—	—	—
<b>H<math>\gamma</math> Broad</b>	—	—	—	—
[O III] 4364	$39.95 \pm 0.30$	$646 \pm 62$	$274 \pm 25$	$0.79 \pm 0.36$
He II Narrow	$40.41 \pm 0.11$	$646 \pm 62$	$274 \pm 25$	$2.69 \pm 0.39$
<b>He II Broad</b>	<b><math>41.38 \pm 0.07</math></b>	<b><math>15483 \pm 62</math></b>	<b><math>6575 \pm 25</math></b>	<b><math>25.52 \pm 1.98</math></b>
H $\beta$ Narrow	$40.72 \pm 0.10$	$690 \pm 63$	$408 \pm 26$	$6.05 \pm 0.60$
<b>H<math>\beta</math> Broad</b>	—	—	—	—
[O III] 5007	$41.91 \pm 0.01$	$690 \pm 63$	$408 \pm 26$	$99.20 \pm 0.72$
He I Narrow	$40.01 \pm 0.17$	$646 \pm 62$	$274 \pm 25$	$1.82 \pm 0.40$
<b>He I Broad</b>	—	—	—	—
[O I] 6300	$40.47 \pm 0.05$	$646 \pm 62$	$274 \pm 25$	$6.07 \pm 0.45$
H $\alpha$ Narrow	$41.88 \pm 0.01$	$646 \pm 62$	$274 \pm 25$	$122.31 \pm 0.69$
<b>H<math>\alpha</math> Broad</b>	—	—	—	—
[N II] 6585	$41.63 \pm 0.01$	$646 \pm 62$	$274 \pm 25$	$68.81 \pm 0.68$
[S II] 6718	$41.05 \pm 0.02$	$646 \pm 62$	$274 \pm 25$	$26.90 \pm 0.59$
[S II] 6732	$41.20 \pm 0.01$	$646 \pm 62$	$274 \pm 25$	$38.24 \pm 0.60$

## Emission Summary

H $\alpha$ broad SNR	0.00
H $\beta$ broad SNR	0.00
H $\gamma$ broad SNR	0.00
AGN frac	0.42
Host frac	0.58
$\log L_{5100, \text{Host}}$	43.74
Fe II/H $\beta$	—
Fe II/[O III]	0.17

## Quality Flags

spurious_hab/hbb	1/0
15100	1
balmer	2
balmer_snr	2
hb_width	2
balmer_width	2