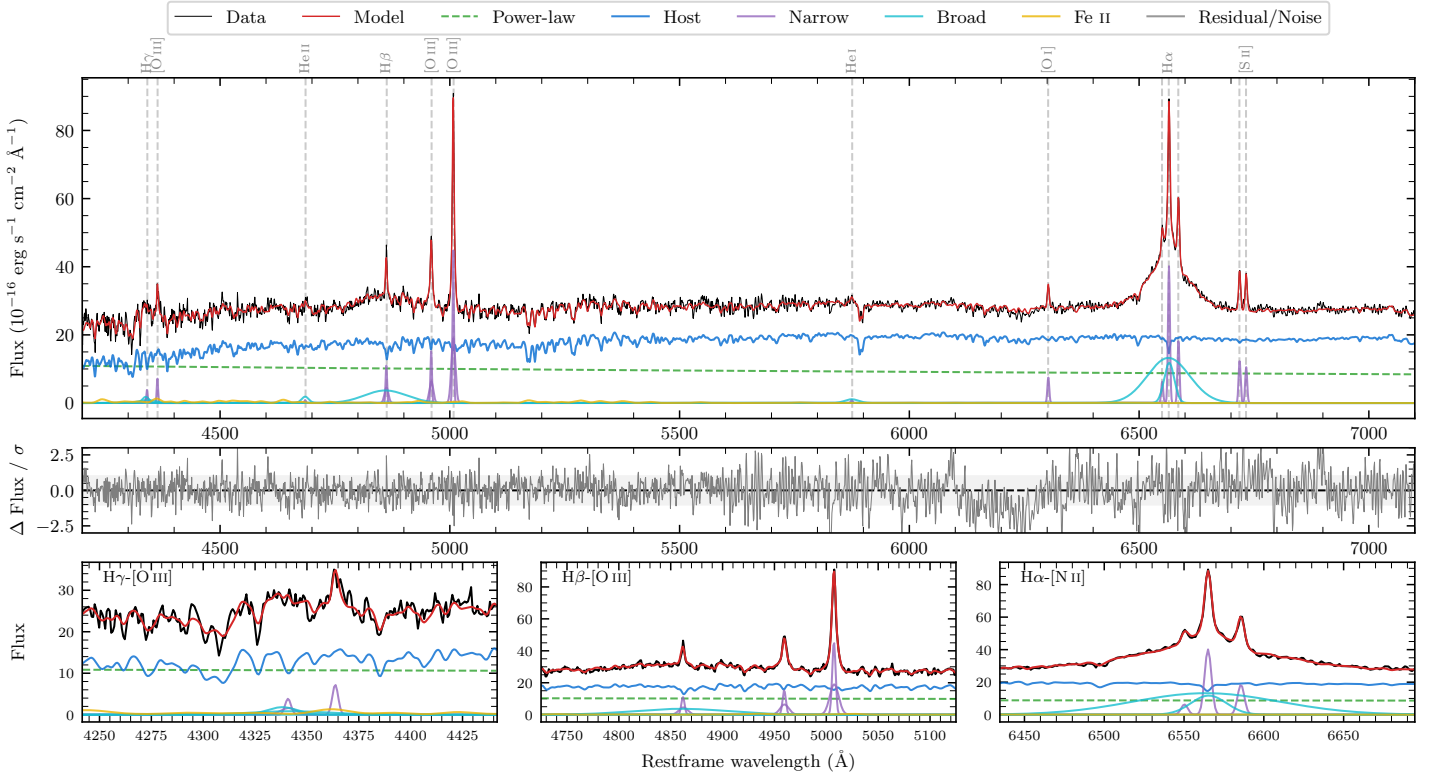
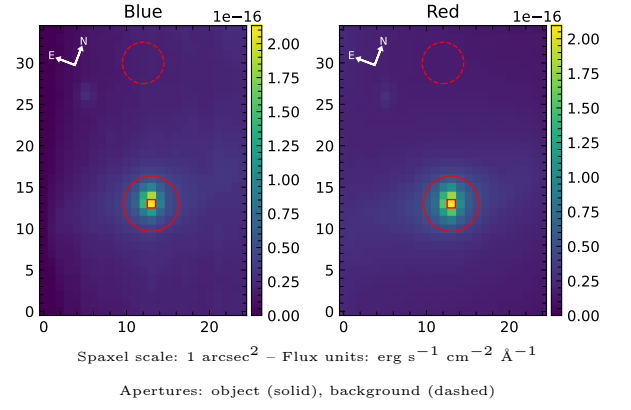


MCG-04-35-008

Spectrum ID	103603382_sp1	Spectrum type	Sy 1.5
Alt name	g1444570-234740	Quality flag	good
z	0.0107	AGN reference	6dFGS
RA, Dec	221.2372, -23.7943	MW $E(B-V)$	0.104
MJD	59671.63	Power law α_ν	-1.51 ± 0.15
SNR/ \AA B/R	19.2/42.4	$\log L_{5100, \text{AGN}}$	42.12 ± 0.02
Obs airmass	1.03	$\log H\beta_{\text{Br}}/[\text{O III}]$	0.04 ± 0.03
SMSS ID	103603382	$\log M_{L5100}/M_\odot$	7.71 ± 0.05
Neighbour	14.5", 103603383	$\log M_{\text{H}\alpha}/M_\odot$	6.41 ± 0.06
SMSS $\langle r_{6''}^{\text{ap}} \rangle$	15.15 ± 0.23	$\log M_{\text{H}\beta}/M_\odot$	7.57 ± 0.08
2MASS K_{ext}	10.45 ± 0.05	$\log M_{[\text{O III}]} / M_\odot$	7.64 ± 0.07



Emission Line Measurements

Line	$\log L$ (erg s^{-1})	FWHM (km s^{-1})	σ (km s^{-1})	EW (\AA)
H γ Narrow	38.88 ± 0.15	289 ± 63	200 ± 25	2.70 ± 0.55
Hγ Broad	39.31 ± 0.13	1485 ± 288	781 ± 158	6.86 ± 1.20
[O III] 4364	38.83 ± 0.10	233 ± 63	97 ± 25	2.43 ± 0.34
He II Narrow	37.95 ± 0.42	233 ± 63	97 ± 25	0.33 ± 0.26
He II Broad	38.99 ± 0.13	1179 ± 62	500 ± 25	3.58 ± 0.59
H β Narrow	39.39 ± 0.03	289 ± 63	200 ± 25	9.17 ± 0.42
Hβ Broad	40.06 ± 0.02	6417 ± 230	2443 ± 32	42.66 ± 1.40
[O III] 5007	40.02 ± 0.01	289 ± 63	200 ± 25	39.76 ± 0.43
He I Narrow	38.08 ± 0.23	233 ± 63	97 ± 25	0.50 ± 0.16
He I Broad	39.04 ± 0.08	1788 ± 67	759 ± 27	4.51 ± 0.46
[O I] 6300	39.01 ± 0.03	233 ± 63	97 ± 25	4.36 ± 0.17
H α Narrow	39.75 ± 0.01	233 ± 63	97 ± 25	24.80 ± 0.20
Hα Broad	40.69 ± 0.01	2254 ± 84	1540 ± 25	213.64 ± 0.82
[N II] 6585	39.42 ± 0.01	233 ± 63	97 ± 25	11.44 ± 0.18
[S II] 6718	39.26 ± 0.01	233 ± 63	97 ± 25	8.09 ± 0.17
[S II] 6732	39.18 ± 0.02	233 ± 63	97 ± 25	6.75 ± 0.17

Emission Summary

H α broad SNR	17.56
H β broad SNR	2.77
H γ broad SNR	1.93
AGN frac	0.38
Host frac	0.62
$\log L_{5100, \text{Host}}$	42.33
Fe II/H β	0.35
Fe II/[O III]	0.38

Quality Flags

spurious_hab/hbb	0/0
15100	1
balmer	1
balmer_snr	1
hb_width	0
balmer_width	1