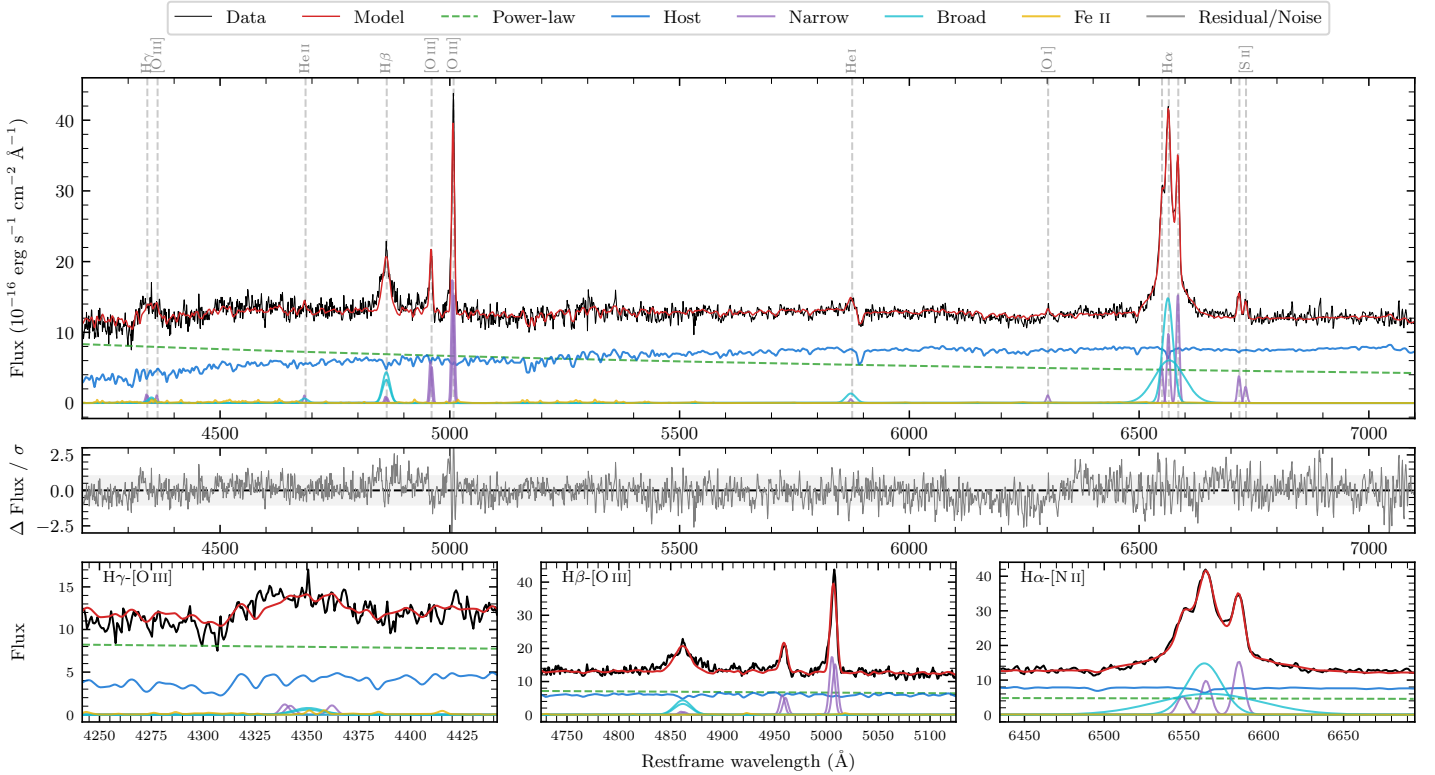
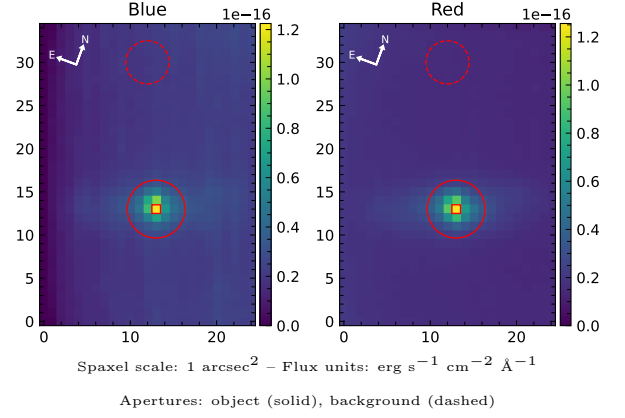


# LEDA 757022

Spectrum ID	103030136_sp1	Spectrum type	Sy 1.5
Alt name	g1437457-271803	Quality flag	good
$z$	0.0649	AGN reference	6dFGS
RA, Dec	219.4402, -27.3009	MW $E(B-V)$	0.090
MJD	59725.49	Power law $\alpha_\nu$	$-0.71 \pm 0.37$
SNR/ $\text{\AA}$ B/R	9.8/19.7	$\log L_{5100, \text{AGN}}$	$43.53 \pm 0.14$
Obs airmass	1.01	$\log H\beta_{\text{Br}}/[\text{O III}]$	$-0.11 \pm 0.05$
SMSS ID	103030136	$\log M_{L5100}/M_\odot$	$6.84 \pm 0.07$
Neighbour	2.8", 2167080245	$\log M_{H\alpha}/M_\odot$	$6.83 \pm 0.04$
SMSS $\langle r_{6'' \text{ap}} \rangle$	$16.65 \pm 0.04$	$\log M_{H\beta}/M_\odot$	$6.63 \pm 0.04$
2MASS $K_{\text{ext}}$	$12.47 \pm 0.09$	$\log M_{[\text{O III}]} / M_\odot$	$6.83 \pm 0.02$



## Emission Line Measurements

Line	$\log L$ ( $\text{erg s}^{-1}$ )	FWHM ( $\text{km s}^{-1}$ )	$\sigma$ ( $\text{km s}^{-1}$ )	EW ( $\text{\AA}$ )
H $\gamma$ Narrow	$40.12 \pm 0.23$	$433 \pm 63$	$176 \pm 25$	$1.66 \pm 0.50$
<b>H<math>\gamma</math> Broad</b>	<b><math>40.51 \pm 0.19</math></b>	<b><math>1184 \pm 63</math></b>	<b><math>404 \pm 25</math></b>	<b><math>3.37 \pm 0.85</math></b>
[O III] 4364	$39.82 \pm 0.39$	$357 \pm 63$	$150 \pm 25$	$0.81 \pm 0.46$
He II Narrow	$39.84 \pm 0.35$	$357 \pm 63$	$150 \pm 25$	$0.92 \pm 0.45$
<b>He II Broad</b>	<b><math>40.14 \pm 0.36</math></b>	<b><math>1184 \pm 63</math></b>	<b><math>503 \pm 25</math></b>	<b><math>1.87 \pm 0.83</math></b>
H $\beta$ Narrow	$40.03 \pm 0.39$	$433 \pm 63$	$176 \pm 25$	$1.58 \pm 0.47$
<b>H<math>\beta</math> Broad</b>	<b><math>41.24 \pm 0.04</math></b>	<b><math>1179 \pm 25</math></b>	<b><math>461 \pm 25</math></b>	<b><math>23.92 \pm 0.86</math></b>
[O III] 5007	$41.35 \pm 0.01$	$433 \pm 63$	$176 \pm 25$	$33.35 \pm 0.57$
He I Narrow	$39.66 \pm 0.35$	$357 \pm 63$	$150 \pm 25$	$0.81 \pm 0.33$
<b>He I Broad</b>	<b><math>40.60 \pm 0.09</math></b>	<b><math>1325 \pm 63</math></b>	<b><math>563 \pm 25</math></b>	<b><math>7.31 \pm 0.69</math></b>
[O I] 6300	$39.98 \pm 0.13$	$357 \pm 63$	$150 \pm 25$	$1.86 \pm 0.33$
H $\alpha$ Narrow	$40.95 \pm 0.05$	$357 \pm 63$	$150 \pm 25$	$18.37 \pm 0.47$
<b>H<math>\alpha</math> Broad</b>	<b><math>41.99 \pm 0.01</math></b>	<b><math>1470 \pm 66</math></b>	<b><math>810 \pm 25</math></b>	<b><math>204.49 \pm 1.35</math></b>
[N II] 6585	$41.15 \pm 0.02$	$357 \pm 63$	$150 \pm 25$	$29.05 \pm 0.44$
[S II] 6718	$40.55 \pm 0.06$	$357 \pm 63$	$150 \pm 25$	$7.57 \pm 0.40$
[S II] 6732	$40.33 \pm 0.08$	$357 \pm 63$	$150 \pm 25$	$4.59 \pm 0.42$

## Emission Summary

H $\alpha$ broad SNR	16.88
H $\beta$ broad SNR	6.46
H $\gamma$ broad SNR	1.32
AGN frac	0.53
Host frac	0.47
$\log L_{5100, \text{Host}}$	43.47
Fe II/H $\beta$	0.33
Fe II/[O III]	0.24

## Quality Flags

spurious_hab/hbb	0/0
15100	0
balmer	0
balmer_snr	1
hb_width	0
balmer_width	2