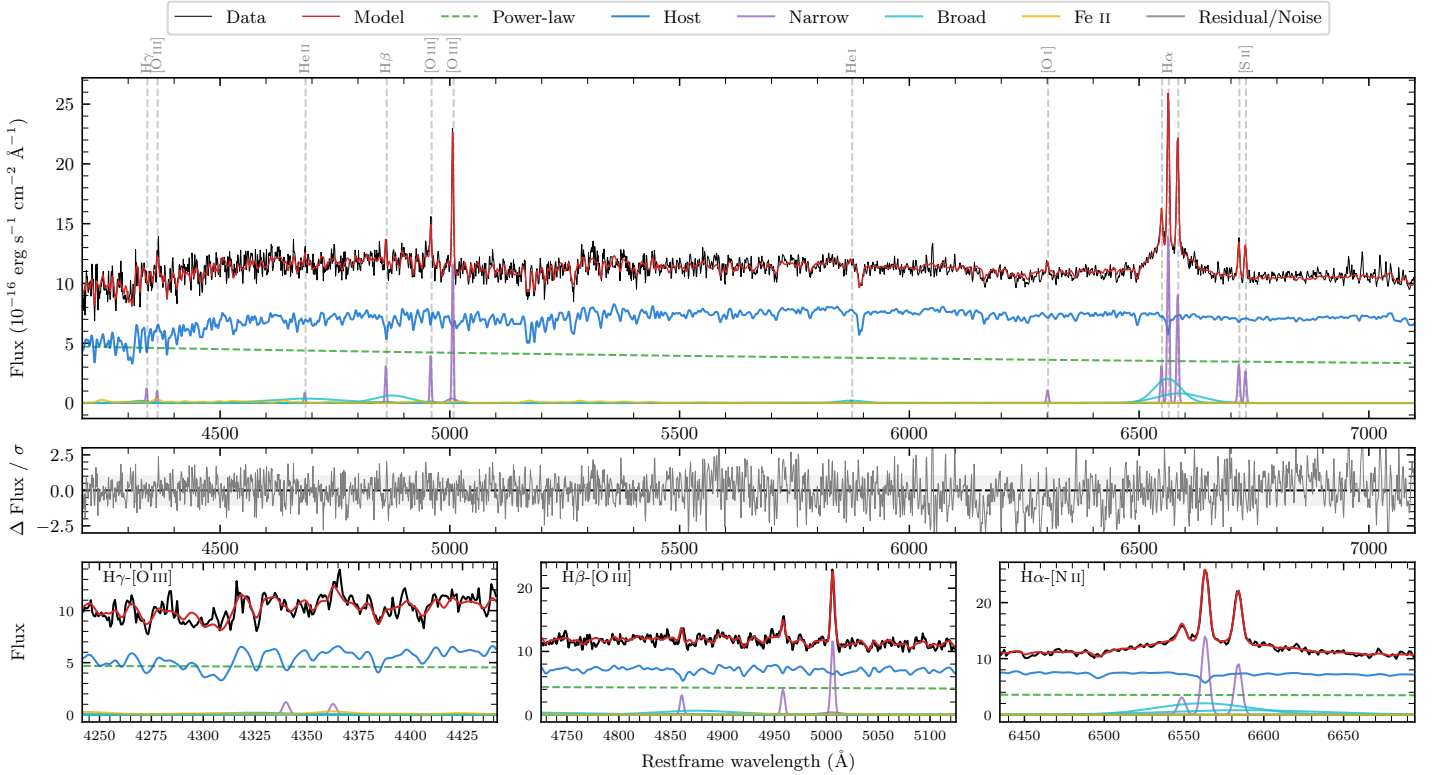
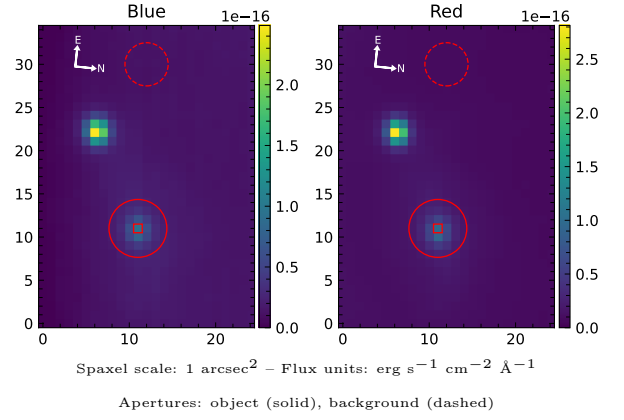


LEDA 791436

Spectrum ID	102689258_sp1	Spectrum type	Sy 1.5
Alt name	g1410293-241748	Quality flag	good
z	0.0413	AGN reference	6dFGS
RA, Dec	212.6219, -24.2966	MW $E(B - V)$	0.069
MJD	59726.5	Power law α_ν	-1.34 ± 0.11
SNR/ \AA B/R	17.2/36.4	$\log L_{5100, \text{AGN}}$	42.93 ± 0.02
Obs airmass	1.01	$\log H\beta_{\text{Br}} / [\text{O III}]$	0.02 ± 0.08
SMSS ID	102689258	$\log M_{L5100} / M_\odot$	7.87 ± 0.08
Neighbour	12.1", 102689259	$\log M_{H\alpha} / M_\odot$	7.03 ± 0.05
SMSS $\langle r_{6''}^{\text{ap}} \rangle$	16.25 ± 0.04	$\log M_{H\beta} / M_\odot$	7.55 ± 0.10
2MASS K_{ext}	12.03 ± 0.08	$\log M_{[\text{O III}]} / M_\odot$	7.65 ± 0.09



Emission Line Measurements

Line	$\log L$ (erg s ⁻¹)	FWHM (km s ⁻¹)	σ (km s ⁻¹)	EW (Å)
H γ Narrow	39.37 ± 0.23	255 ± 63	256 ± 60	1.25 ± 0.80
Hγ Broad	—	—	—	—
[O III] 4364	39.23 ± 0.27	249 ± 63	104 ± 25	0.90 ± 0.35
He II Narrow	39.18 ± 0.26	249 ± 63	104 ± 25	0.85 ± 0.30
He II Broad	40.50 ± 0.09	12000 ± 67	5096 ± 27	17.58 ± 2.23
H β Narrow	39.82 ± 0.08	255 ± 63	257 ± 60	3.79 ± 0.68
Hβ Broad	40.43 ± 0.07	5167 ± 426	1988 ± 40	15.25 ± 1.52
[O III] 5007	40.41 ± 0.03	255 ± 63	257 ± 60	15.12 ± 0.72
He I Narrow	38.67 ± 0.37	249 ± 63	104 ± 25	0.31 ± 0.18
He I Broad	39.75 ± 0.13	3139 ± 64	1333 ± 26	3.67 ± 0.63
[O I] 6300	39.40 ± 0.09	249 ± 63	104 ± 25	1.73 ± 0.20
H α Narrow	40.53 ± 0.01	249 ± 63	104 ± 25	23.95 ± 0.23
Hα Broad	41.02 ± 0.01	3630 ± 101	1467 ± 37	73.44 ± 0.94
[N II] 6585	40.35 ± 0.01	249 ± 63	104 ± 25	15.58 ± 0.22
[S II] 6718	39.91 ± 0.03	249 ± 63	104 ± 25	5.73 ± 0.21
[S II] 6732	39.82 ± 0.03	249 ± 63	104 ± 25	4.68 ± 0.20

Emission Summary

H α broad SNR	4.33
H β broad SNR	1.15
H γ broad SNR	0.70
AGN frac	0.39
Host frac	0.61
$\log L_{5100, \text{Host}}$	43.14
Fe II/H β	0.59
Fe II/[O III]	0.61

Quality Flags

spurious_hab/hbb	0/0
15100	1
balmer	1
balmer_snr	2
hb_width	0
balmer_width	0