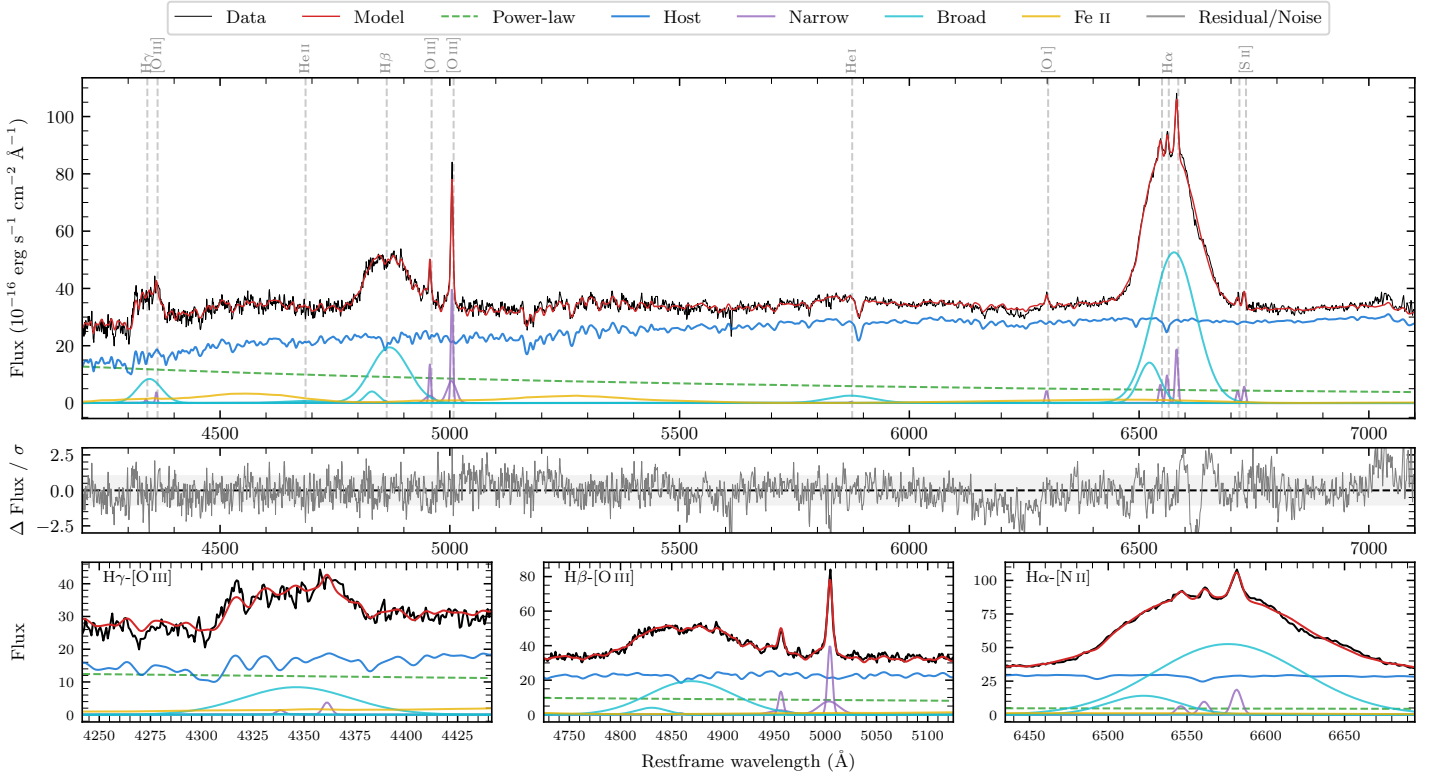
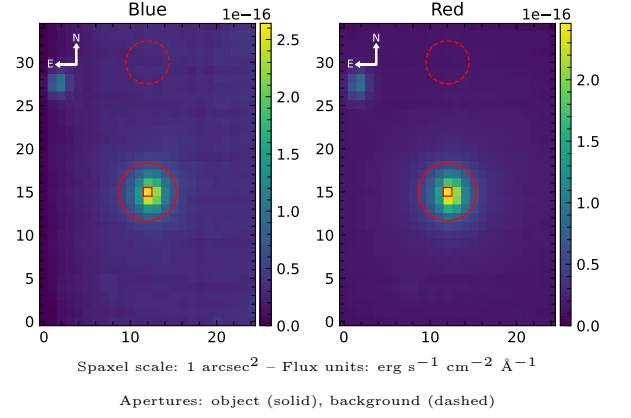


MCG-04-34-010

Spectrum ID	102610151_sp1	Spectrum type	Sy 1.0
Alt name	g1419224-263841	Quality flag	good
z	0.0221	AGN reference	6dFGS
RA, Dec	214.8434, -26.6447	MW $E(B-V)$	0.056
MJD	60048.61	Power law α_ν	0.29 ± 0.15
SNR/ \AA B/R	20.5/33.4	$\log L_{5100, \text{AGN}}$	42.69 ± 0.03
Obs airmass	1.00	$\log H\beta_{\text{Br}}/[\text{O III}]$	0.70 ± 0.01
SMSS ID	102610151	$\log M_{L5100}/M_\odot$	7.95 ± 0.03
Neighbour	9.7", 2166619148	$\log M_{\text{H}\alpha}/M_\odot$	7.98 ± 0.01
SMSS $\langle r_{6''}^{\text{ap}} \rangle$	14.83 ± 0.11	$\log M_{\text{H}\beta}/M_\odot$	8.18 ± 0.03
2MASS K_{ext}	9.74 ± 0.04	$\log M_{[\text{O III}]} / M_\odot$	7.98 ± 0.04



Emission Line Measurements

Line	$\log L$ (erg s ⁻¹)	FWHM (km s ⁻¹)	σ (km s ⁻¹)	EW (Å)
H γ Narrow	39.19 ± 0.36	378 ± 63	416 ± 27	1.12 ± 0.76
Hγ Broad	40.83 ± 0.03	4209 ± 100	1579 ± 26	48.67 ± 1.41
[O III] 4364	39.36 ± 0.17	332 ± 63	140 ± 25	1.68 ± 0.38
He II Narrow	38.65 ± 0.44	332 ± 63	140 ± 25	0.38 ± 0.36
He II Broad	40.03 ± 0.15	7129 ± 70	3027 ± 29	9.17 ± 1.73
H β Narrow	39.03 ± 0.37	378 ± 63	416 ± 27	1.00 ± 0.79
Hβ Broad	41.42 ± 0.01	6406 ± 51	2242 ± 25	243.44 ± 1.80
[O III] 5007	40.71 ± 0.01	378 ± 63	417 ± 27	51.47 ± 0.88
He I Narrow	38.51 ± 0.44	332 ± 63	140 ± 25	0.46 ± 0.44
He I Broad	40.59 ± 0.03	5970 ± 74	2535 ± 30	55.52 ± 2.16
[O I] 6300	39.57 ± 0.06	332 ± 63	140 ± 25	6.32 ± 0.56
H α Narrow	39.96 ± 0.04	332 ± 63	140 ± 25	16.78 ± 0.76
Hα Broad	41.93 ± 0.01	5735 ± 65	1958 ± 25	1568.65 ± 2.79
[N II] 6585	40.24 ± 0.02	332 ± 63	140 ± 25	32.56 ± 0.79
[S II] 6718	39.59 ± 0.07	332 ± 63	140 ± 25	7.64 ± 0.74
[S II] 6732	39.74 ± 0.05	332 ± 63	140 ± 25	10.76 ± 0.78

Emission Summary

H α broad SNR	31.64
H β broad SNR	11.54
H γ broad SNR	5.12
AGN frac	0.26
Host frac	0.74
$\log L_{5100, \text{Host}}$	43.14
Fe II/H β	0.38
Fe II/[O III]	1.92

Quality Flags

spurious_hab/hbb	0/0
15100	1
balmer	0
balmer_snr	0
hb_width	0
balmer_width	0