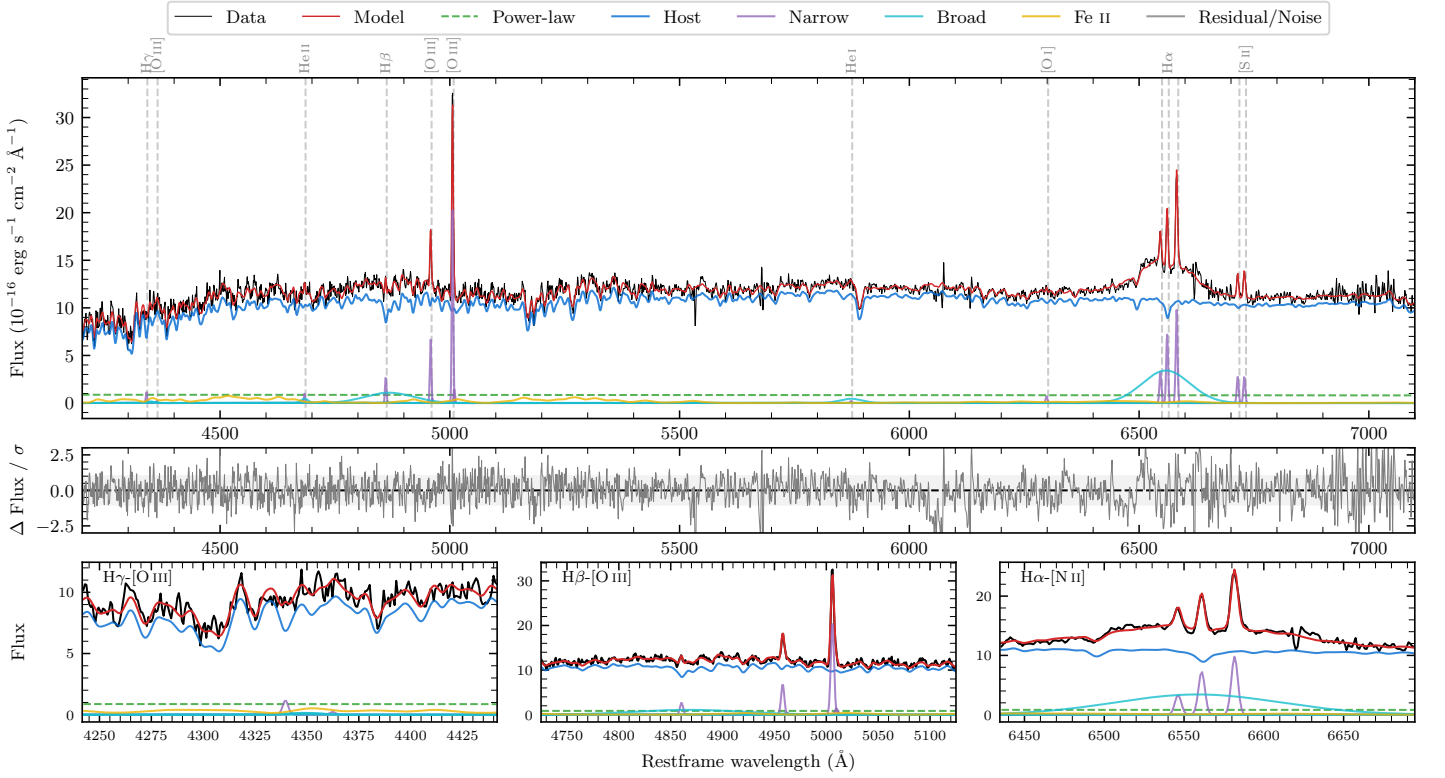
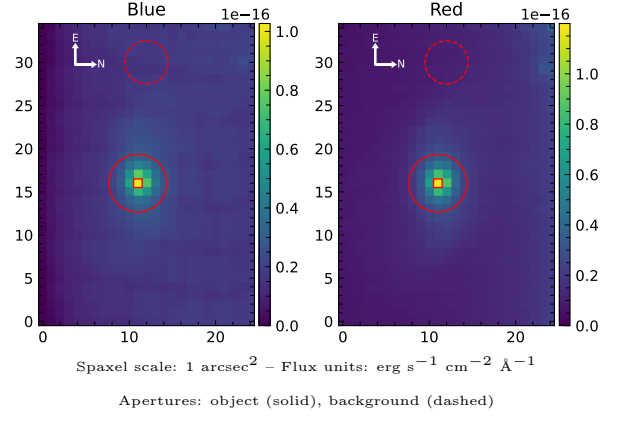


LEDA 3816991

Spectrum ID	102492345_sp1	Spectrum type	Sy 1.5
Alt name	g1358318-242903	Quality flag	good
z	0.0376	AGN reference	6dFGS
RA, Dec	209.6325, -24.4841	MW $E(B - V)$	0.057
MJD	60381.69	Power law α_ν	-1.85 ± 0.13
SNR/ \AA B/R	19.9/31.5	$\log L_{5100, \text{AGN}}$	42.15 ± 0.08
Obs airmass	1.01	$\log H\beta_{\text{Br}}/[\text{O III}]$	0.24 ± 0.04
SMSS ID	102492345	$\log M_{L5100}/M_\odot$	7.83 ± 0.07
Neighbour	None $< 15''$	$\log M_{\text{H}\alpha}/M_\odot$	7.49 ± 0.04
SMSS $\langle r_6''_{\text{ap}} \rangle$	16.18 ± 0.06	$\log M_{\text{H}\beta}/M_\odot$	7.96 ± 0.07
2MASS K_{ext}	11.85 ± 0.09	$\log M_{[\text{O III}]} / M_\odot$	7.96 ± 0.07



Emission Line Measurements

Line	$\log L$ (erg s^{-1})	FWHM (km s^{-1})	σ (km s^{-1})	EW (\AA)
H γ Narrow	39.15 ± 0.22	227 ± 63	108 ± 25	5.04 ± 1.53
Hγ Broad	—	—	—	—
[O III] 4364	—	—	—	—
He II Narrow	39.08 ± 0.24	220 ± 63	93 ± 25	4.35 ± 1.24
He II Broad	39.48 ± 0.23	1179 ± 62	500 ± 25	10.82 ± 2.98
H β Narrow	39.57 ± 0.07	227 ± 63	108 ± 25	13.32 ± 1.31
Hβ Broad	40.70 ± 0.03	7228 ± 360	2774 ± 38	178.50 ± 7.38
[O III] 5007	40.46 ± 0.01	227 ± 63	108 ± 25	104.55 ± 1.47
He I Narrow	38.54 ± 0.43	220 ± 63	93 ± 25	1.29 ± 0.98
He I Broad	39.96 ± 0.08	2913 ± 65	1237 ± 26	34.26 ± 3.61
[O I] 6300	39.07 ± 0.17	220 ± 63	93 ± 25	4.41 ± 0.97
H α Narrow	40.09 ± 0.02	220 ± 63	93 ± 25	47.05 ± 1.03
Hα Broad	41.17 ± 0.01	5551 ± 67	2068 ± 25	566.06 ± 5.39
[N II] 6585	40.22 ± 0.01	220 ± 63	93 ± 25	63.65 ± 1.21
[S II] 6718	39.68 ± 0.04	220 ± 63	93 ± 25	18.32 ± 1.01
[S II] 6732	39.69 ± 0.04	220 ± 63	93 ± 25	18.51 ± 1.08

Emission Summary

H α broad SNR	5.83
H β broad SNR	2.02
H γ broad SNR	0.66
AGN frac	0.08
Host frac	0.92
$\log L_{5100, \text{Host}}$	43.22
Fe II/H β	0.99
Fe II/[O III]	1.70

Quality Flags

spurious_hab/hbb	0/0
15100	2
balmer	1
balmer_snr	2
hb_width	0
balmer_width	0