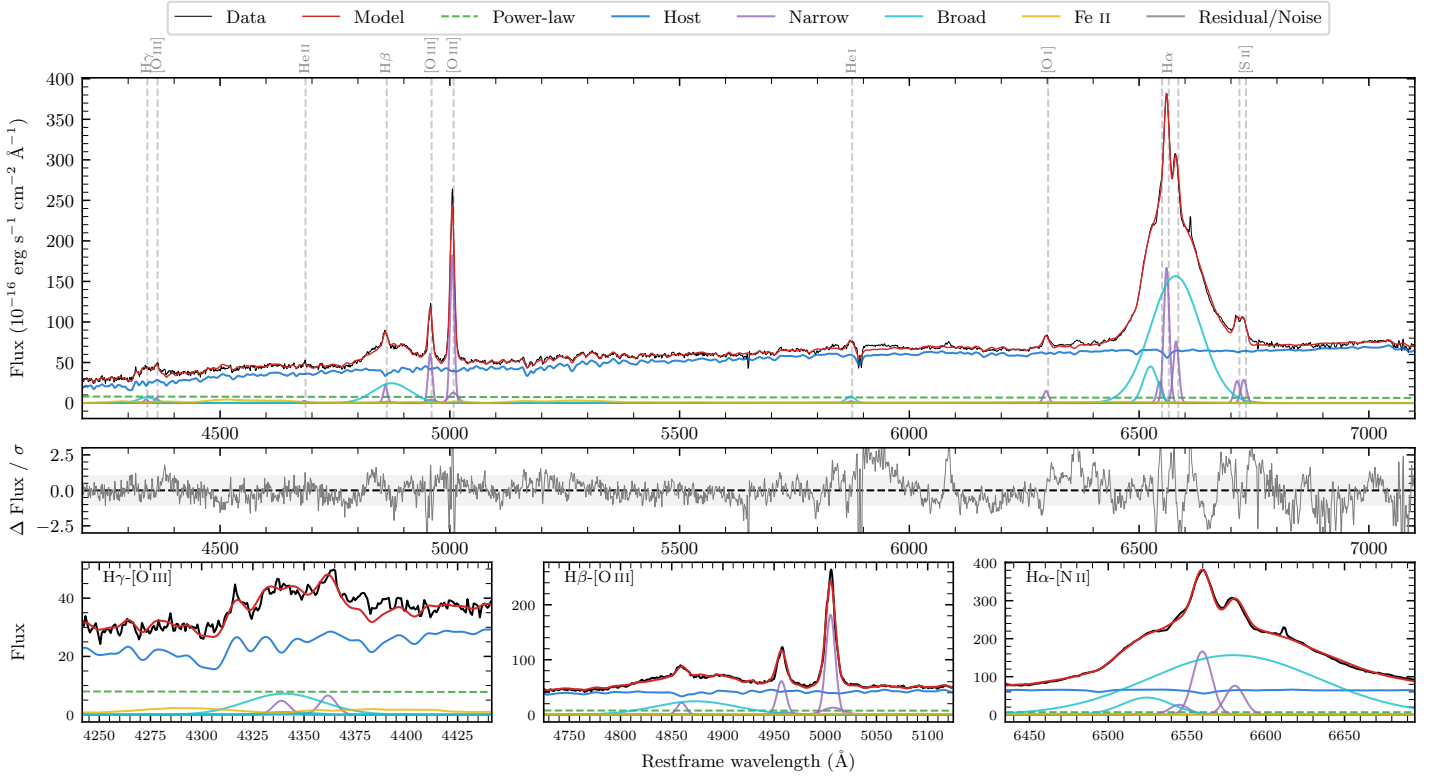
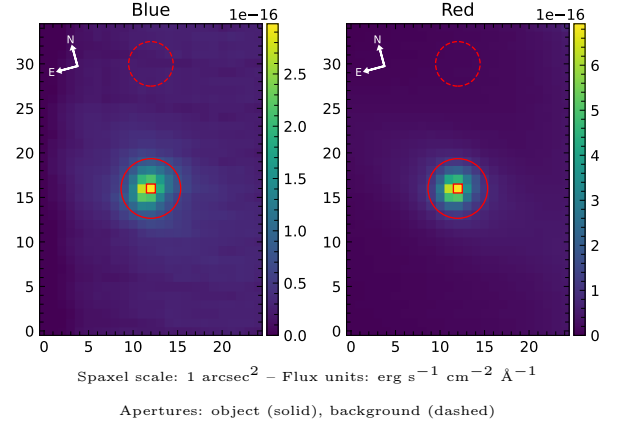


IC 4329A

Spectrum ID	101780207_sp1	Spectrum type	Sy 1.5
Alt name	g1349193-301834	Quality flag	good
z	0.0160	AGN reference	6dFGS
RA, Dec	207.3302, -30.3095	MW $E(B - V)$	0.050
MJD	60375.76	Power law α_ν	-1.54 ± 0.24
SNR/ \AA B/R	15.5/33.0	$\log L_{5100, \text{AGN}}$	42.34 ± 0.04
Obs airmass	1.05	$\log H\beta_{\text{Br}}/[\text{O III}]$	0.01 ± 0.01
SMSS ID	101780207	$\log M_{L5100}/M_\odot$	7.71 ± 0.04
Neighbour	None $< 15''$	$\log M_{\text{H}\alpha}/M_\odot$	8.19 ± 0.01
SMSS $\langle r_6'' \text{ap} \rangle$	13.78 ± 0.12	$\log M_{\text{H}\beta}/M_\odot$	7.97 ± 0.04
2MASS K_{ext}	8.80 ± 0.01	$\log M_{[\text{O III}]} / M_\odot$	8.11 ± 0.03



Emission Line Measurements

Line	$\log L$ (erg s ⁻¹)	FWHM (km s ⁻¹)	σ (km s ⁻¹)	EW (Å)
H γ Narrow	39.52 ± 0.22	675 ± 63	339 ± 26	7.13 ± 1.99
Hγ Broad	40.36 ± 0.08	2916 ± 257	1074 ± 55	47.01 ± 3.21
[O III] 4364	39.60 ± 0.15	652 ± 63	276 ± 25	8.53 ± 1.47
He II Narrow	39.22 ± 0.31	652 ± 63	276 ± 25	3.74 ± 1.31
He II Broad	39.40 ± 0.32	1378 ± 117	585 ± 49	5.08 ± 1.84
H β Narrow	40.23 ± 0.04	675 ± 63	340 ± 26	38.38 ± 1.94
Hβ Broad	41.17 ± 0.01	5723 ± 122	2126 ± 35	334.28 ± 4.11
[O III] 5007	41.16 ± 0.01	675 ± 63	340 ± 26	333.84 ± 2.11
He I Narrow	39.25 ± 0.36	652 ± 63	276 ± 25	4.35 ± 1.12
He I Broad	40.08 ± 0.07	1181 ± 63	501 ± 25	29.50 ± 1.60
[O I] 6300	40.11 ± 0.03	652 ± 63	276 ± 25	32.92 ± 1.24
H α Narrow	41.18 ± 0.01	652 ± 63	276 ± 25	393.75 ± 2.16
Hα Broad	42.14 ± 0.01	6340 ± 65	2169 ± 25	3582.60 ± 4.78
[N II] 6585	40.84 ± 0.01	652 ± 63	276 ± 25	180.99 ± 2.13
[S II] 6718	40.40 ± 0.02	652 ± 63	276 ± 25	66.60 ± 1.42
[S II] 6732	40.43 ± 0.01	652 ± 63	276 ± 25	70.14 ± 1.42

Emission Summary

H α broad SNR	46.94
H β broad SNR	7.49
H γ broad SNR	2.56
AGN frac	0.15
Host frac	0.85
$\log L_{5100, \text{Host}}$	43.10
Fe II/H β	0.34
Fe II/[O III]	0.35

Quality Flags

spurious_hab/hbb	0/0
15100	2
balmer	0
balmer_snr	1
hb_width	0
balmer_width	1