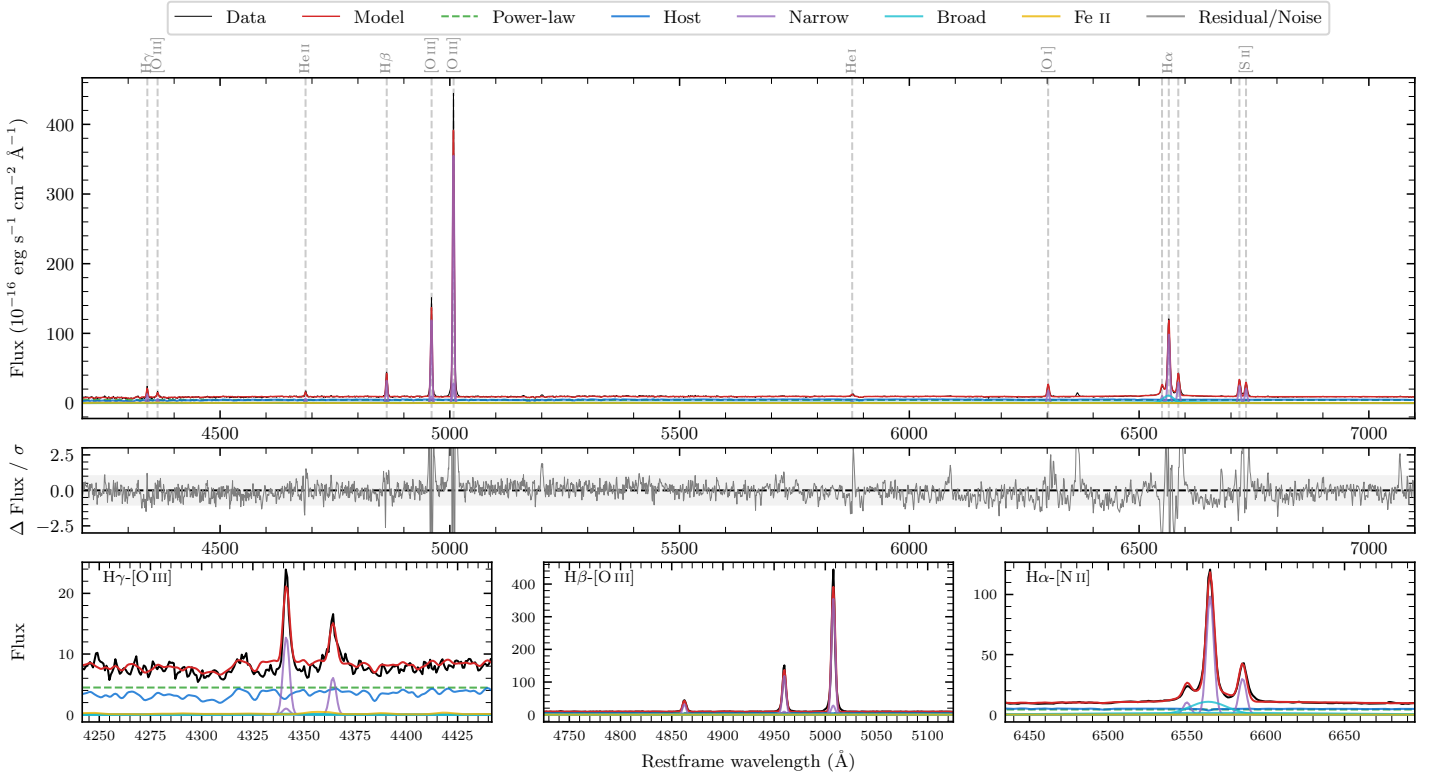
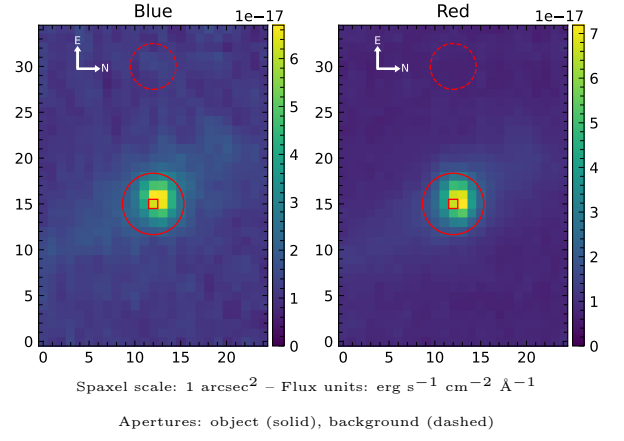


# MCG-04-05-004

|  |                   |  |                  |
|--|-------------------|--|------------------|
| Spectrum ID                              | 1016803820_sp1    | Spectrum type                            | Sy 2             |
| Alt name                                 | g0139204-202711   | Quality flag                             | good             |
| $z$                                      | 0.0211            | AGN reference                            | 6dFGS            |
| RA, Dec                                  | 24.8351, -20.4531 | MW $E(B-V)$                              | 0.013            |
| MJD                                      | 60167.78          | Power law $\alpha_\nu$                   | $-1.92 \pm 0.08$ |
| SNR/ $\text{\AA}$ B/R                    | 7.0/14.2          | $\log L_{5100, \text{AGN}}$              | $42.36 \pm 0.06$ |
| Obs airmass                              | 1.02              | $\log H\beta_{\text{Br}}/[\text{O III}]$ | —                |
| SMSS ID                                  | 1016803820        | $\log M_{L5100}/M_\odot$                 | —                |
| Neighbour                                | 1.8", 2023419282  | $\log M_{\text{H}\alpha}/M_\odot$        | —                |
| SMSS $\langle r_{6'' \text{ap}} \rangle$ | $15.85 \pm 0.04$  | $\log M_{\text{H}\beta}/M_\odot$         | —                |
| 2MASS $K_{\text{ext}}$                   | $12.08 \pm 0.07$  | $\log M_{[\text{O III}]} / M_\odot$      | —                |



## Emission Line Measurements

| Line                              | $\log L$ (erg s <sup>-1</sup> )    | FWHM (km s <sup>-1</sup> )       | $\sigma$ (km s <sup>-1</sup> )  | EW (Å)                            |
|-----------------------------------|------------------------------------|----------------------------------|---------------------------------|-----------------------------------|
| H $\gamma$ Narrow                 | $39.77 \pm 0.07$                   | $258 \pm 63$                     | $110 \pm 34$                    | $12.49 \pm 0.76$                  |
| <b>H<math>\gamma</math> Broad</b> | —                                  | —                                | —                               | —                                 |
| [O III] 4364                      | $39.39 \pm 0.10$                   | $258 \pm 64$                     | $108 \pm 26$                    | $5.49 \pm 0.71$                   |
| He II Narrow                      | $39.46 \pm 0.07$                   | $258 \pm 64$                     | $108 \pm 26$                    | $6.52 \pm 0.60$                   |
| <b>He II Broad</b>                | <b><math>39.54 \pm 0.34</math></b> | <b><math>8502 \pm 101</math></b> | <b><math>3611 \pm 41</math></b> | <b><math>7.70 \pm 3.06</math></b> |
| H $\beta$ Narrow                  | $40.22 \pm 0.02$                   | $258 \pm 63$                     | $110 \pm 34$                    | $35.43 \pm 0.64$                  |
| <b>H<math>\beta</math> Broad</b>  | —                                  | —                                | —                               | —                                 |
| [O III] 5007                      | $41.26 \pm 0.01$                   | $258 \pm 63$                     | $110 \pm 34$                    | $402.90 \pm 1.11$                 |
| He I Narrow                       | $39.13 \pm 0.10$                   | $258 \pm 64$                     | $108 \pm 26$                    | $3.10 \pm 0.33$                   |
| <b>He I Broad</b>                 | <b><math>39.16 \pm 0.21</math></b> | <b><math>1281 \pm 89</math></b>  | <b><math>544 \pm 37</math></b>  | <b><math>3.16 \pm 0.76</math></b> |
| [O I] 6300                        | $40.02 \pm 0.02$                   | $258 \pm 64$                     | $108 \pm 26$                    | $24.31 \pm 0.39$                  |
| H $\alpha$ Narrow                 | $41.03 \pm 0.01$                   | $258 \pm 64$                     | $108 \pm 26$                    | $138.09 \pm 0.58$                 |
| <b>H<math>\alpha</math> Broad</b> | —                                  | —                                | —                               | —                                 |
| [N II] 6585                       | $40.51 \pm 0.01$                   | $258 \pm 64$                     | $108 \pm 26$                    | $42.32 \pm 0.44$                  |
| [S II] 6718                       | $40.19 \pm 0.01$                   | $258 \pm 64$                     | $108 \pm 26$                    | $35.67 \pm 0.45$                  |
| [S II] 6732                       | $40.11 \pm 0.02$                   | $258 \pm 64$                     | $108 \pm 26$                    | $30.13 \pm 0.51$                  |

## Emission Summary

|                              |       |
|------------------------------|-------|
| H $\alpha$ broad SNR         | 0.00  |
| H $\beta$ broad SNR          | 0.00  |
| H $\gamma$ broad SNR         | 0.00  |
| AGN frac                     | 0.51  |
| Host frac                    | 0.49  |
| $\log L_{5100, \text{Host}}$ | 42.34 |
| Fe II/H $\beta$              | —     |
| Fe II/[O III]                | 0.04  |

## Quality Flags

|                  |     |
|------------------|-----|
| spurious_hab/hbb | 1/0 |
| 15100            | 0   |
| balmer           | 2   |
| balmer_snr       | 2   |
| hb_width         | 2   |
| balmer_width     | 2   |