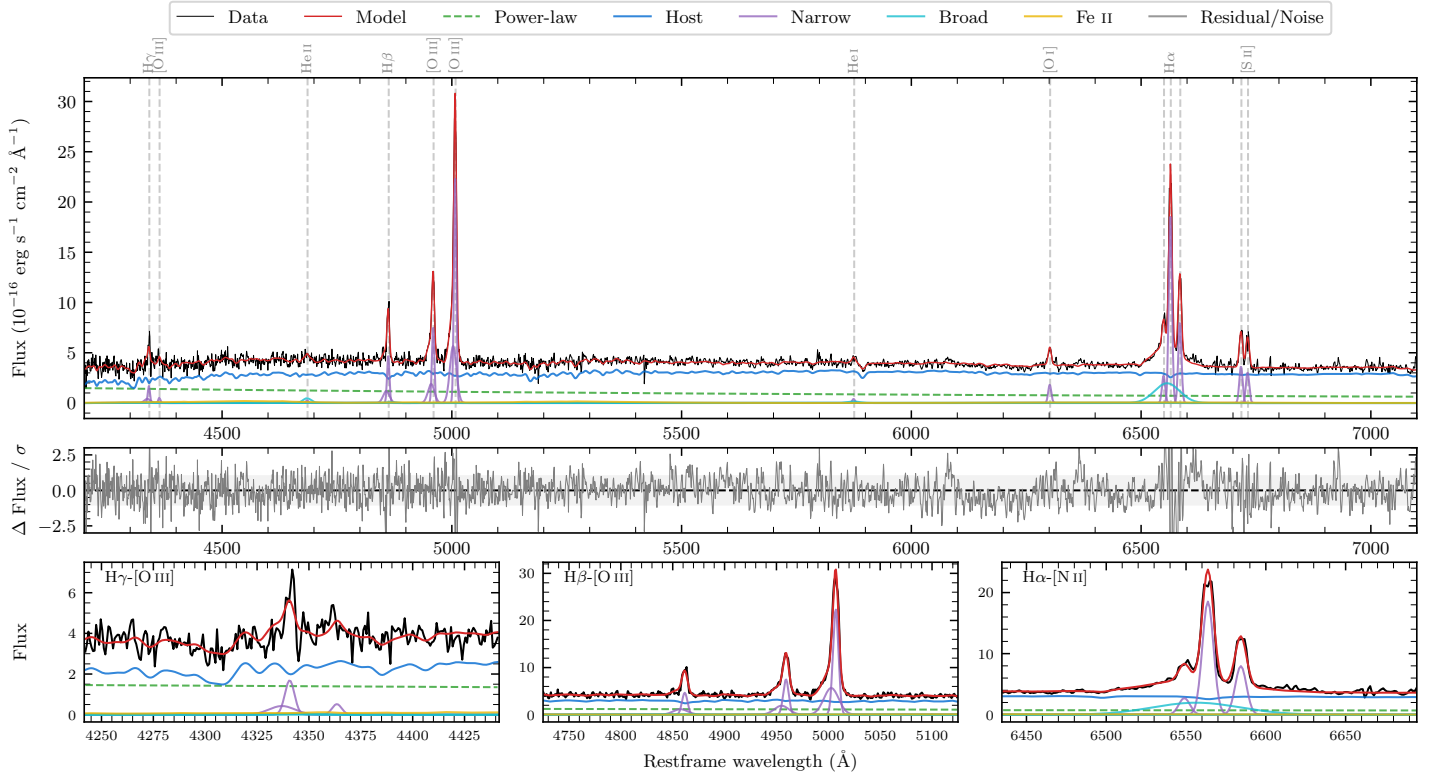
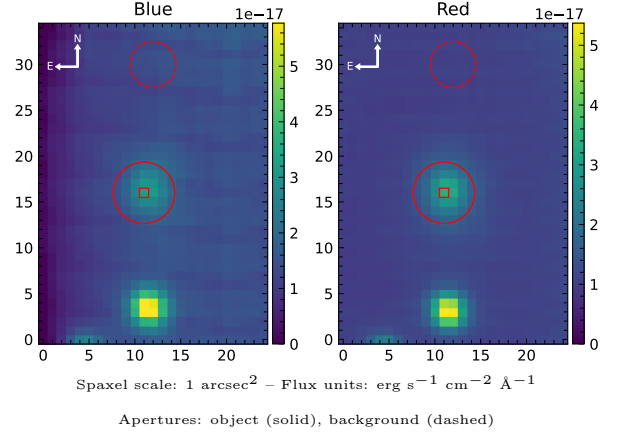


6dFGS gJ135633.7–321316

Spectrum ID	101637375_sp1	Spectrum type	Sy 2
Alt name	g1356337–321316	Quality flag	good
z	0.0867	AGN reference	6dFGS
RA, Dec	209.1405, -32.2213	MW $E(B - V)$	0.059
MJD	60378.75	Power law α_ν	-0.38 ± 0.21
SNR/ \AA B/R	10.4/13.3	$\log L_{5100, \text{AGN}}$	43.02 ± 0.05
Obs airmass	1.04	$\log H\beta_{\text{Br}}/[\text{O III}]$	—
SMSS ID	101637375	$\log M_{L5100}/M_\odot$	—
Neighbour	12.8", 101637347	$\log M_{\text{H}\alpha}/M_\odot$	—
SMSS $\langle r_{6'' \text{ap}} \rangle$	17.20 ± 0.01	$\log M_{\text{H}\beta}/M_\odot$	—
2MASS K_{ext}	12.51 ± 0.08	$\log M_{[\text{O III}]} / M_\odot$	—



Emission Line Measurements

Line	$\log L$ (erg s^{-1})	FWHM (km s^{-1})	σ (km s^{-1})	EW (\AA)
H γ Narrow	40.52 ± 0.08	432 ± 63	324 ± 25	12.68 ± 1.29
Hγ Broad	—	—	—	—
[O III] 4364	39.79 ± 0.24	377 ± 62	159 ± 25	2.36 ± 0.77
He II Narrow	39.57 ± 0.39	377 ± 62	159 ± 25	1.59 ± 0.78
He II Broad	40.33 ± 0.15	1316 ± 63	559 ± 25	9.14 ± 1.53
H β Narrow	41.02 ± 0.03	432 ± 63	324 ± 25	47.13 ± 1.50
Hβ Broad	—	—	—	—
[O III] 5007	41.71 ± 0.01	432 ± 63	324 ± 25	244.49 ± 1.78
He I Narrow	39.81 ± 0.22	377 ± 62	159 ± 25	4.01 ± 0.93
He I Broad	40.02 ± 0.27	1612 ± 63	684 ± 25	6.54 ± 1.94
[O I] 6300	40.50 ± 0.03	377 ± 62	159 ± 25	21.66 ± 1.14
H α Narrow	41.71 ± 0.01	377 ± 62	159 ± 25	245.69 ± 1.29
Hα Broad	—	—	—	—
[N II] 6585	41.34 ± 0.01	377 ± 62	159 ± 25	106.48 ± 1.29
[S II] 6718	40.82 ± 0.02	377 ± 62	159 ± 25	51.33 ± 1.73
[S II] 6732	40.75 ± 0.03	377 ± 62	159 ± 25	43.03 ± 1.65

Emission Summary

H α broad SNR	0.00
H β broad SNR	0.00
H γ broad SNR	0.00
AGN frac	0.28
Host frac	0.72
$\log L_{5100, \text{Host}}$	43.43
Fe II/H β	—
Fe II/[O III]	0.19

Quality Flags

spurious_hab/hbb	1/0
15100	1
balmer	2
balmer_snr	2
hb_width	2
balmer_width	2