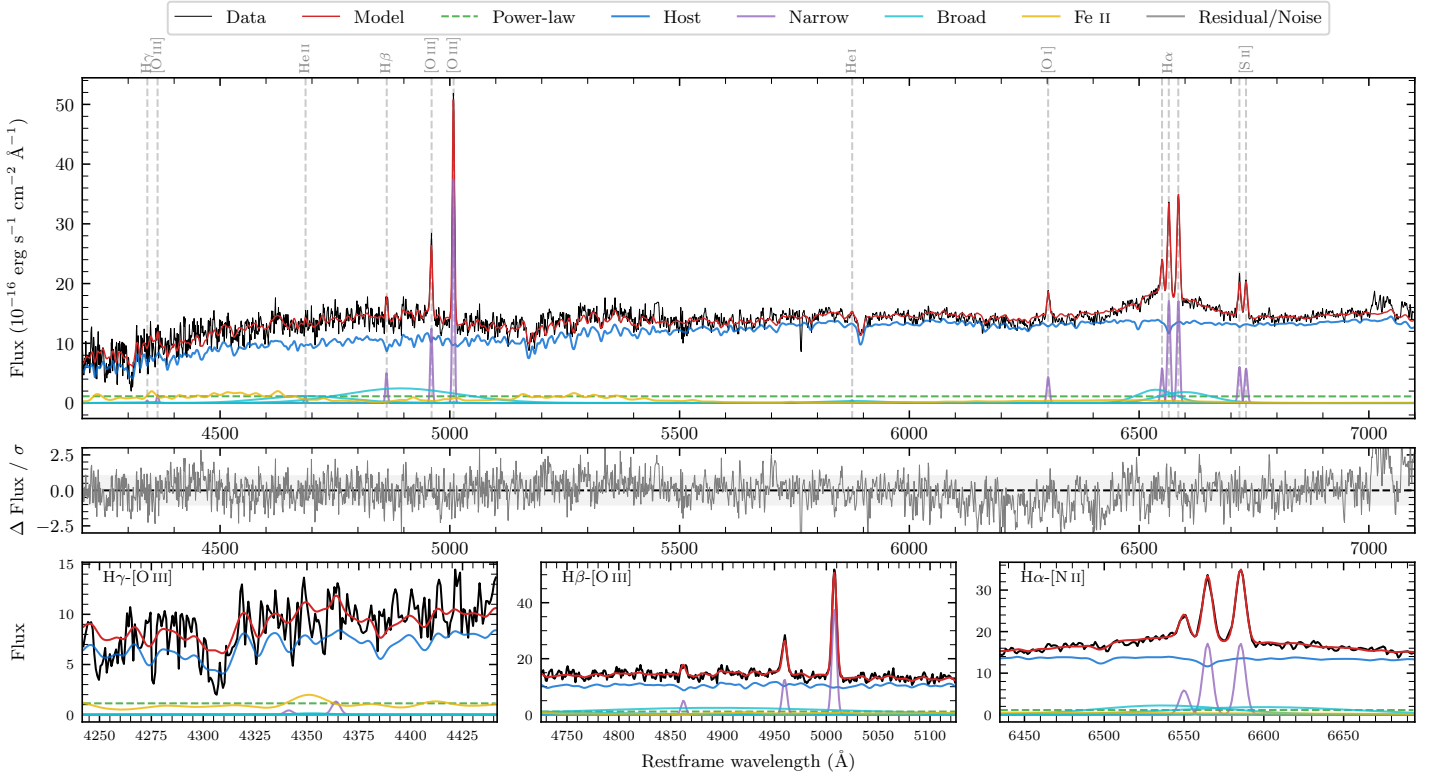
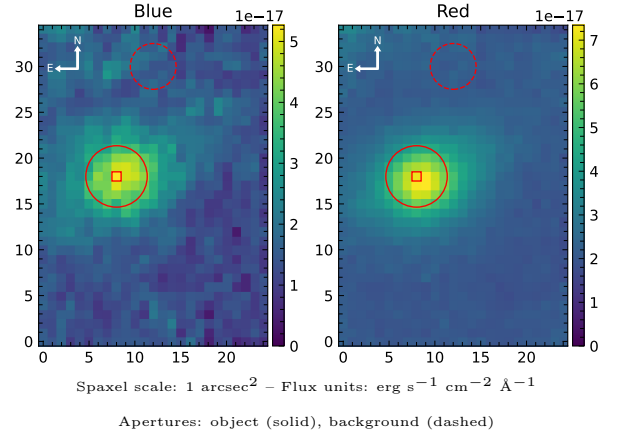


LEDA 3827236

Spectrum ID	101281975_sp2	Spectrum type	Sy 1.5+
Alt name	g1428588-313935	Quality flag	good
z	0.0231	AGN reference	6dFGS
RA, Dec	217.2448, -31.6597	MW $E(B - V)$	0.063
MJD	61141.58	Power law α_ν	-1.97 ± 0.04
SNR/ \AA B/R	10.5/22.5	$\log L_{5100, \text{AGN}}$	41.85 ± 0.12
Obs airmass	1.05	$\log H\beta_{\text{Br}}/[\text{O III}]$	< -0.45
SMSS ID	101281975	$\log M_{L5100}/M_\odot$	—
Neighbour	8.1", 2164889216	$\log M_{\text{H}\alpha}/M_\odot$	7.37 ± 0.05
SMSS $\langle r_{6'' \text{ap}} \rangle$	15.24 ± 0.03	$\log M_{\text{H}\beta}/M_\odot$	—
2MASS K_{ext}	11.33 ± 0.06	$\log M_{[\text{O III}]} / M_\odot$	—



Emission Line Measurements

Line	$\log L$ (erg s $^{-1}$)	FWHM (km s $^{-1}$)	σ (km s $^{-1}$)	EW (Angstrom)
H γ Narrow	—	—	—	—
Hγ Broad	—	—	—	—
[O III] 4364	38.93 ± 0.33	329 ± 62	139 ± 25	6.06 ± 3.17
He II Narrow	38.89 ± 0.32	329 ± 62	139 ± 25	5.59 ± 2.63
He II Broad	—	—	—	—
H β Narrow	39.56 ± 0.08	329 ± 63	149 ± 27	26.08 ± 4.28
Hβ Broad	< 40.00	—	—	—
[O III] 5007	40.45 ± 0.01	329 ± 63	149 ± 27	200.44 ± 4.18
He I Narrow	38.61 ± 0.40	329 ± 62	139 ± 25	2.94 ± 1.85
He I Broad	39.86 ± 0.14	7874 ± 63	3344 ± 25	52.73 ± 9.15
[O I] 6300	39.61 ± 0.04	329 ± 62	139 ± 25	29.36 ± 1.58
H α Narrow	40.22 ± 0.01	329 ± 62	139 ± 25	119.72 ± 1.72
Hα Broad	40.79 ± 0.02	6293 ± 165	2367 ± 25	450.23 ± 6.96
[N II] 6585	40.22 ± 0.01	329 ± 62	139 ± 25	120.38 ± 1.68
[S II] 6718	39.78 ± 0.04	329 ± 62	139 ± 25	43.44 ± 1.89
[S II] 6732	39.76 ± 0.03	329 ± 62	139 ± 25	41.44 ± 1.78

Emission Summary

H α broad SNR	2.58
H β broad SNR	0.00
H γ broad SNR	0.00
AGN frac	0.10
Host frac	0.90
$\log L_{5100, \text{Host}}$	42.81
Fe II/H β	—
Fe II/[O III]	—

Quality Flags

spurious_hab/hbb	0/2
15100	2
balmer	2
balmer_snr	2
hb_width	2
balmer_width	2