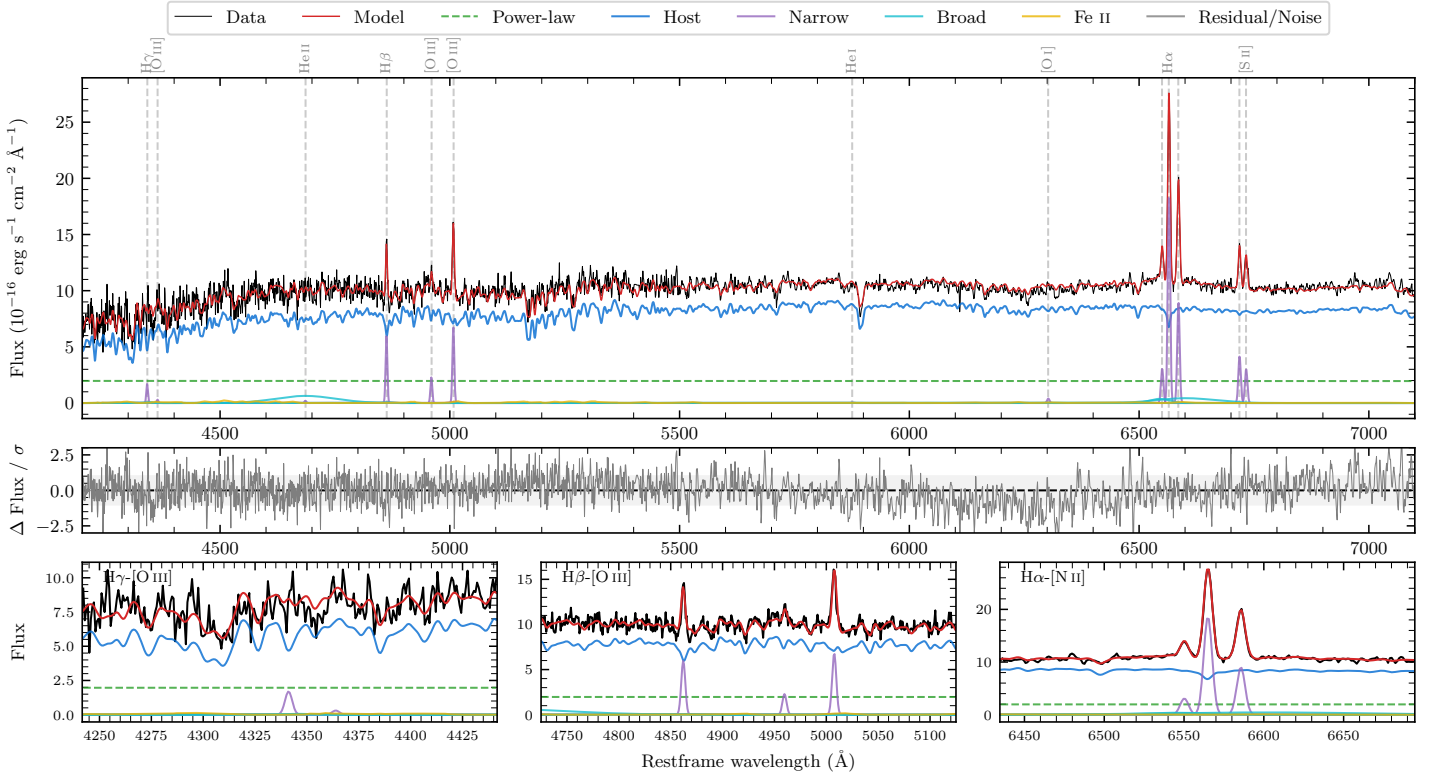
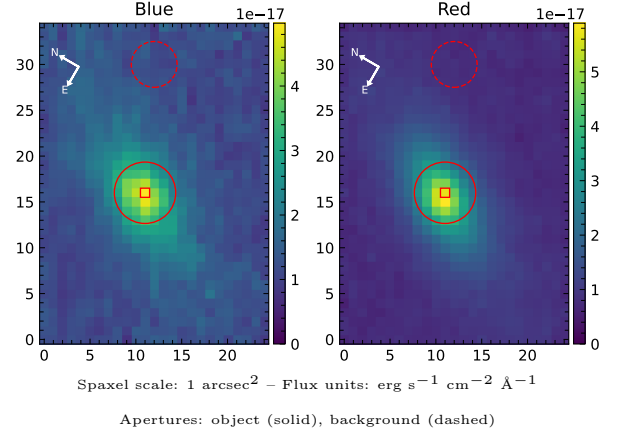


MCG-05-04-033

Spectrum ID	10121073_sp1	Spectrum type	Sy 1.5+
Alt name	g0122548-304708	Quality flag	good
z	0.0316	AGN reference	6dFGS
RA, Dec	20.7284, -30.7855	MW $E(B-V)$	0.019
MJD	60166.74	Power law α_ν	-1.99 ± 0.01
SNR/ \AA B/R	15.4/31.6	$\log L_{5100, \text{AGN}}$	42.37 ± 0.02
Obs airmass	1.00	$\log H\beta_{\text{Br}}/[\text{O III}]$	< 0.01
SMSS ID	10121073	$\log M_{L5100}/M_\odot$	—
Neighbour	None $< 15''$	$\log M_{\text{H}\alpha}/M_\odot$	7.02 ± 0.13
SMSS $\langle r_6''_{\text{ap}} \rangle$	15.76 ± 0.05	$\log M_{\text{H}\beta}/M_\odot$	—
2MASS K_{ext}	11.45 ± 0.06	$\log M_{[\text{O III}]} / M_\odot$	—



Emission Line Measurements

Line	$\log L$ (erg s ⁻¹)	FWHM (km s ⁻¹)	σ (km s ⁻¹)	EW (Å)
H γ Narrow	39.28 ± 0.17	289 ± 63	180 ± 52	4.10 ± 1.64
Hγ Broad	—	—	—	—
[O III] 4364	—	—	—	—
He II Narrow	—	—	—	—
He II Broad	40.39 ± 0.06	9781 ± 62	4154 ± 25	54.32 ± 4.26
H β Narrow	39.87 ± 0.04	289 ± 63	180 ± 52	16.18 ± 1.33
Hβ Broad	< 39.95	—	—	—
[O III] 5007	39.94 ± 0.04	289 ± 63	180 ± 52	19.01 ± 1.35
He I Narrow	—	—	—	—
He I Broad	—	—	—	—
[O I] 6300	38.79 ± 0.24	286 ± 62	120 ± 25	1.35 ± 0.41
H α Narrow	40.47 ± 0.01	286 ± 62	120 ± 25	64.54 ± 0.47
Hα Broad	40.32 ± 0.04	5890 ± 723	2290 ± 36	45.98 ± 2.08
[N II] 6585	40.15 ± 0.01	286 ± 62	120 ± 25	31.35 ± 0.44
[S II] 6718	39.82 ± 0.02	286 ± 62	120 ± 25	14.71 ± 0.46
[S II] 6732	39.69 ± 0.03	286 ± 62	120 ± 25	10.76 ± 0.45

Emission Summary

H α broad SNR	1.05
H β broad SNR	0.00
H γ broad SNR	0.00
AGN frac	0.21
Host frac	0.79
$\log L_{5100, \text{Host}}$	42.94
Fe II/H β	—
Fe II/[O III]	0.81

Quality Flags

spurious_hab/hbb	0/0
15100	1
balmer	2
balmer_snr	2
hb_width	2
balmer_width	2