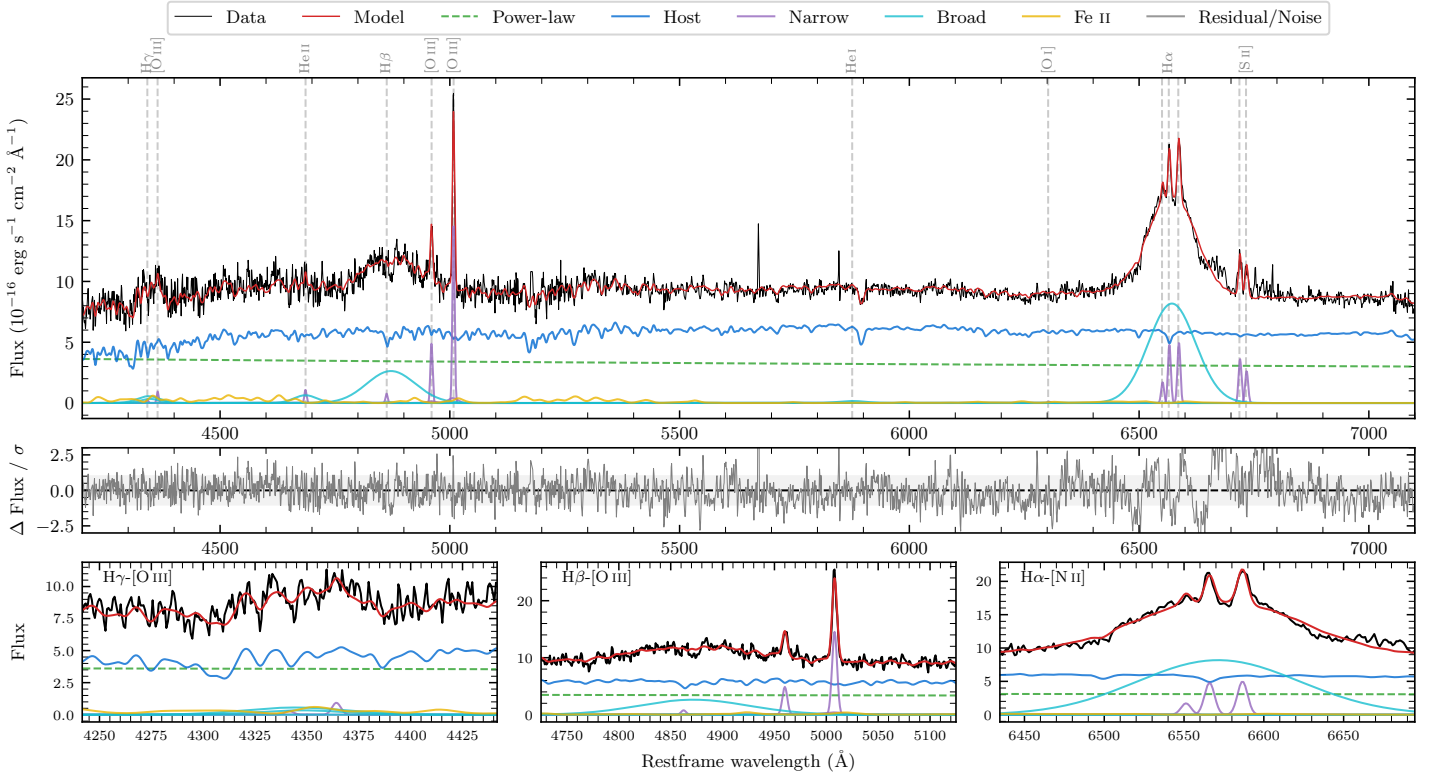
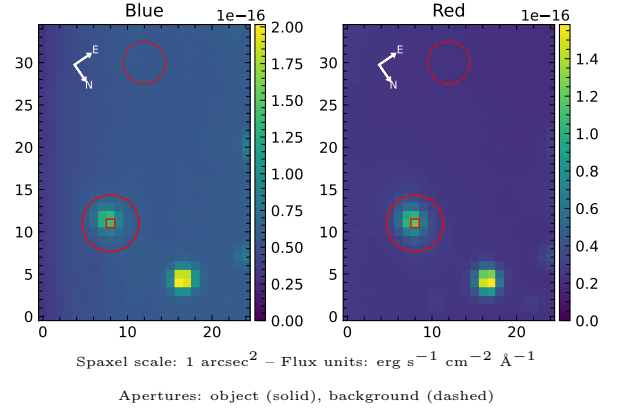


6dFGS gJ143318.1–355902

Spectrum ID	100837830_sp1	Spectrum type	Sy 1.2
Alt name	g1433181–355902	Quality flag	good
z	0.0776	AGN reference	6dFGS
RA, Dec	218.3253, –35.9839	MW $E(B - V)$	0.056
MJD	59440.4	Power law α_ν	-1.64 ± 0.06
SNR/ \AA B/R	11.9/24.7	$\log L_{5100, \text{AGN}}$	43.41 ± 0.02
Obs airmass	1.18	$\log H\beta_{\text{Br}}/[\text{O III}]$	0.55 ± 0.03
SMSS ID	100837830	$\log M_{L5100}/M_\odot$	8.40 ± 0.02
Neighbour	9.8", 1125924723	$\log M_{\text{H}\alpha}/M_\odot$	8.12 ± 0.01
SMSS $\langle r_{6''} \text{ap} \rangle$	16.51 ± 0.02	$\log M_{\text{H}\beta}/M_\odot$	8.47 ± 0.03
2MASS K_{ext}	12.65 ± 0.10	$\log M_{[\text{O III}]} / M_\odot$	8.36 ± 0.03



Emission Line Measurements

Line	$\log L$ (erg s ⁻¹)	FWHM (km s ⁻¹)	σ (km s ⁻¹)	EW (Å)
$\text{H}\gamma$ Narrow	–	–	–	–
$\text{H}\gamma$ Broad	40.96 ± 0.11	3744 ± 212	1392 ± 67	15.76 ± 2.27
$[\text{O III}]$ 4364	39.89 ± 0.30	343 ± 63	144 ± 25	1.48 ± 0.64
He II Narrow	39.99 ± 0.23	343 ± 63	144 ± 25	1.89 ± 0.56
He II Broad	40.80 ± 0.13	3711 ± 63	1576 ± 25	12.23 ± 1.96
$\text{H}\beta$ Narrow	39.91 ± 0.30	347 ± 63	237 ± 56	1.59 ± 1.05
$\text{H}\beta$ Broad	41.75 ± 0.02	7485 ± 142	2814 ± 25	109.51 ± 2.89
$[\text{O III}]$ 5007	41.20 ± 0.03	347 ± 63	238 ± 55	31.03 ± 1.20
He I Narrow	–	–	–	–
He I Broad	40.30 ± 0.20	3540 ± 63	1503 ± 25	4.22 ± 1.07
$[\text{O I}]$ 6300	–	–	–	–
$\text{H}\alpha$ Narrow	40.78 ± 0.02	343 ± 63	144 ± 25	13.23 ± 0.37
$\text{H}\alpha$ Broad	42.23 ± 0.01	5485 ± 65	2041 ± 25	367.05 ± 1.61
$[\text{N II}]$ 6585	40.80 ± 0.02	343 ± 63	144 ± 25	13.84 ± 0.37
$[\text{S II}]$ 6718	40.67 ± 0.04	343 ± 63	144 ± 25	10.29 ± 0.46
$[\text{S II}]$ 6732	40.53 ± 0.04	343 ± 63	144 ± 25	7.50 ± 0.46

Emission Summary

$\text{H}\alpha$ broad SNR	11.03
$\text{H}\beta$ broad SNR	3.68
$\text{H}\gamma$ broad SNR	1.34
AGN frac	0.38
Host frac	0.62
$\log L_{5100, \text{Host}}$	43.62
Fe II/ $\text{H}\beta$	0.32
Fe II/ $[\text{O III}]$	1.12

Quality Flags

spurious_hab/hbb	0/0
15100	1
balmer	0
balmer_snr	1
hb_width	0
balmer_width	0