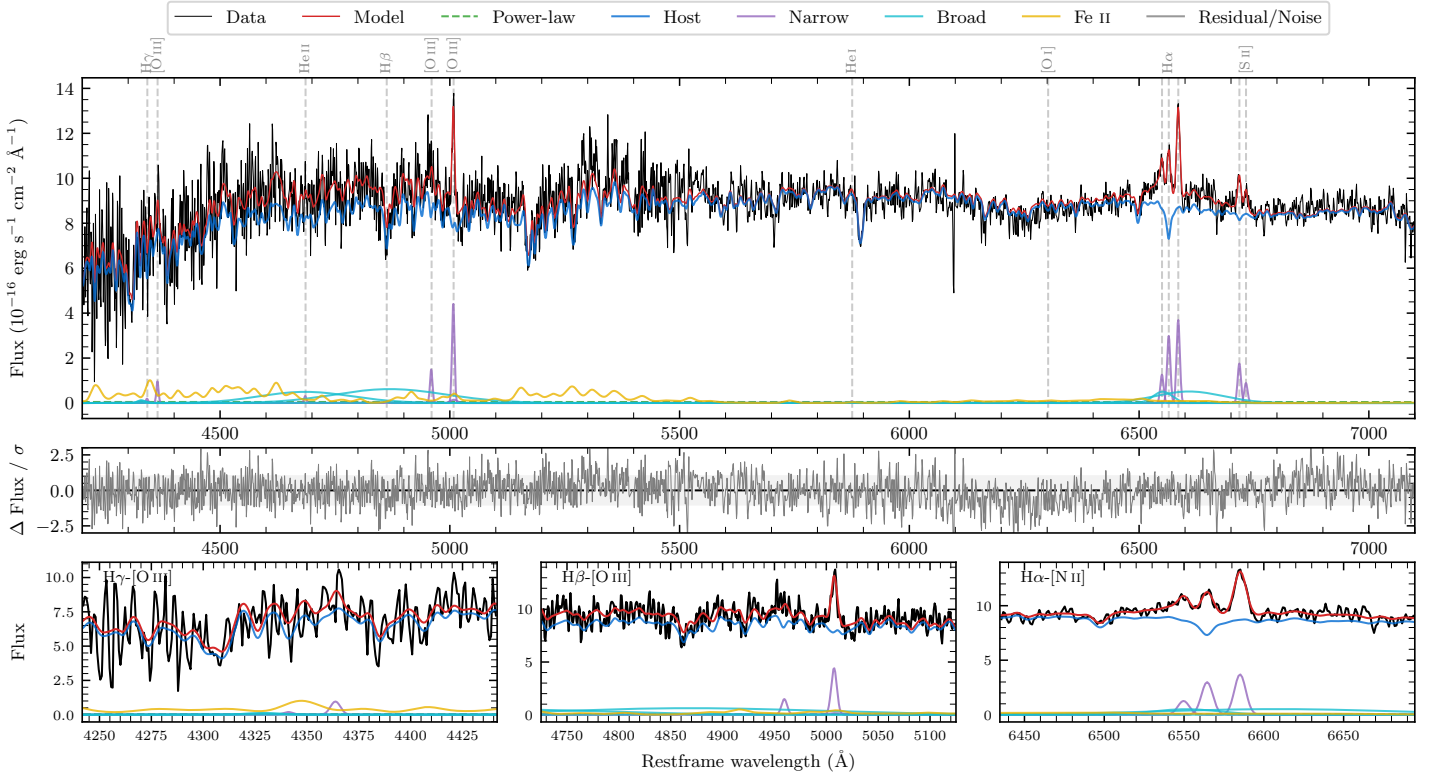
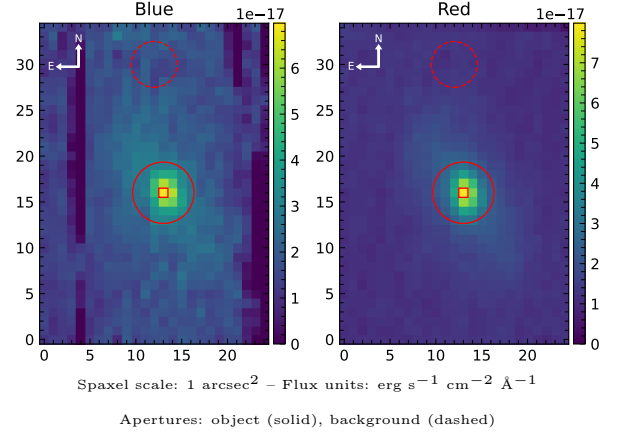


NGC 427

Spectrum ID	10032748_sp1	Spectrum type	Bad
Alt name	g0112192-320340	Quality flag	bad_blue
z	0.0341	AGN reference	6dFGS
RA, Dec	18.0803, -32.0611	MW $E(B - V)$	0.024
MJD	60254.49	Power law α_ν	-1.92 ± 0.07
SNR/ \AA B/R	9.5/20.5	$\log L_{5100, \text{AGN}}$	40.80 ± 0.64
Obs airmass	1.01	$\log H\beta_{\text{Br}}/[\text{O III}]$	—
SMSS ID	10032748	$\log M_{L5100}/M_\odot$	—
Neighbour	11.7", 2017162329	$\log M_{\text{H}\alpha}/M_\odot$	—
SMSS $\langle r_{6'' \text{ap}} \rangle$	15.53 ± 0.03	$\log M_{\text{H}\beta}/M_\odot$	—
2MASS K_{ext}	11.20 ± 0.06	$\log M_{[\text{O III}]} / M_\odot$	—



Emission Line Measurements

Line	$\log L$ (erg s $^{-1}$)	FWHM (km s $^{-1}$)	σ (km s $^{-1}$)	EW (\AA)
H γ Narrow	—	—	—	—
Hγ Broad	—	—	—	—
[O III] 4364	39.19 ± 0.24	386 ± 62	163 ± 25	126.53 ± 65.25
He II Narrow	—	—	—	—
He II Broad	—	—	—	—
H β Narrow	—	—	—	—
Hβ Broad	—	—	—	—
[O III] 5007	39.95 ± 0.05	394 ± 63	199 ± 40	734.49 ± 78.99
He I Narrow	—	—	—	—
He I Broad	—	—	—	—
[O I] 6300	—	—	—	—
H α Narrow	39.86 ± 0.03	386 ± 62	163 ± 25	609.66 ± 27.99
Hα Broad	—	—	—	—
[N II] 6585	39.95 ± 0.03	386 ± 62	163 ± 25	756.87 ± 27.98
[S II] 6718	39.64 ± 0.06	386 ± 62	163 ± 25	368.57 ± 30.30
[S II] 6732	39.35 ± 0.10	386 ± 62	163 ± 25	186.74 ± 29.39

Emission Summary

H α broad SNR	0.95
H β broad SNR	0.00
H γ broad SNR	0.00
AGN frac	0.01
Host frac	0.99
$\log L_{5100, \text{Host}}$	43.03
Fe II/H β	—
Fe II/[O III]	—

Quality Flags

spurious_hab/hbb	0/1
15100	2
balmer	2
balmer_snr	2
hb_width	2
balmer_width	2