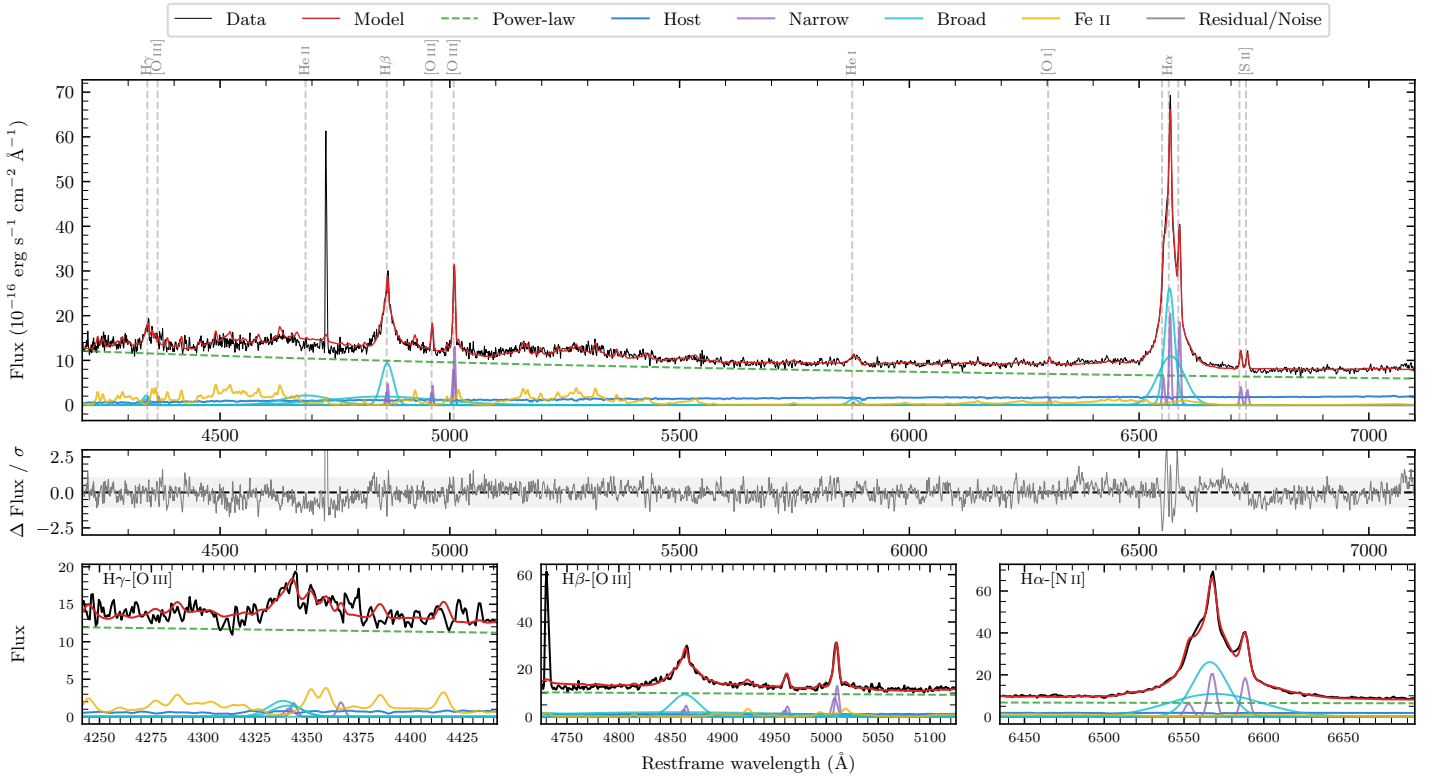
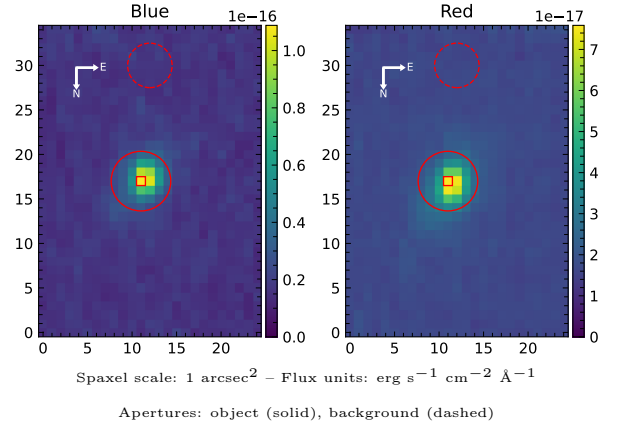


LEDA 88967

Spectrum ID	100008374_sp1	Spectrum type	Sy 1.2
Alt name	g1410487-364412	Quality flag	good
z	0.0625	AGN reference	6dFGS
RA, Dec	212.7031, -36.7366	MW $E(B - V)$	0.061
MJD	60077.53	Power law α_ν	-0.64 ± 0.20
SNR/ \AA B/R	7.5/9.6	$\log L_{5100, \text{AGN}}$	43.65 ± 0.02
Obs airmass	1.00	$\log H\beta_{\text{Br}}/[\text{O III}]$	0.44 ± 0.25
SMSS ID	100008374	$\log M_{L5100}/M_\odot$	7.31 ± 0.03
Neighbour	1.5", 2163048665	$\log M_{H\alpha}/M_\odot$	6.94 ± 0.04
SMSS $\langle r_{6''}^{\text{ap}} \rangle$	15.90 ± 0.08	$\log M_{H\beta}/M_\odot$	7.16 ± 0.12
2MASS K_{ext}	12.12 ± 0.07	$\log M_{[\text{O III}]} / M_\odot$	7.09 ± 0.04



Emission Line Measurements

Line	$\log L$ (erg s $^{-1}$)	FWHM (km s $^{-1}$)	σ (km s $^{-1}$)	EW (Å)
H γ Narrow	40.13 ± 0.27	334 ± 66	151 ± 26	1.25 ± 0.40
Hγ Broad	40.85 ± 0.10	1194 ± 64	459 ± 25	6.04 ± 0.75
[O III] 4364	39.90 ± 0.29	263 ± 63	111 ± 25	0.73 ± 0.34
He II Narrow	—	—	—	—
He II Broad	—	—	—	—
H β Narrow	40.60 ± 0.09	334 ± 66	151 ± 26	4.20 ± 0.43
Hβ Broad	$41.49^{+0.46}_{-0.03}$	1891 ± 47	677 ± 25	32.90 ± 0.99
[O III] 5007	41.05 ± 0.03	334 ± 66	151 ± 26	12.44 ± 0.46
He I Narrow	39.57 ± 0.38	263 ± 63	111 ± 25	0.51 ± 0.30
He I Broad	40.58 ± 0.11	1328 ± 76	563 ± 31	5.17 ± 0.69
[O I] 6300	39.94 ± 0.15	263 ± 63	111 ± 25	1.34 ± 0.31
H α Narrow	41.11 ± 0.03	263 ± 63	111 ± 25	20.55 ± 0.54
Hα Broad	42.18 ± 0.01	1456 ± 65	744 ± 25	244.10 ± 1.43
[N II] 6585	41.05 ± 0.02	263 ± 63	111 ± 25	18.36 ± 0.44
[S II] 6718	40.40 ± 0.07	263 ± 63	111 ± 25	4.18 ± 0.39
[S II] 6732	40.34 ± 0.07	263 ± 63	111 ± 25	3.64 ± 0.36

Emission Summary

H α broad SNR	21.81
H β broad SNR	5.55
H γ broad SNR	2.26
AGN frac	0.88
Host frac	0.12
$\log L_{5100, \text{Host}}$	42.77
Fe II/H β	—
Fe II/[O III]	—

Quality Flags

spurious_hab/hbb	0/2
15100	0
balmer	0
balmer_snr	1
hb_width	0
balmer_width	0