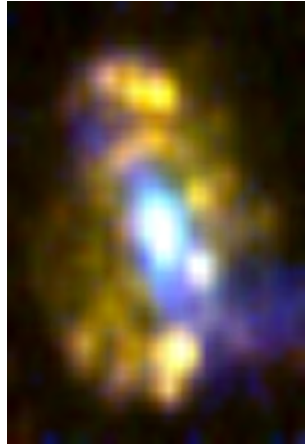
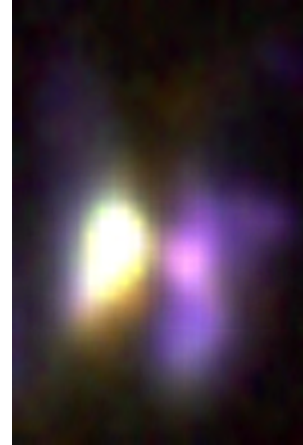
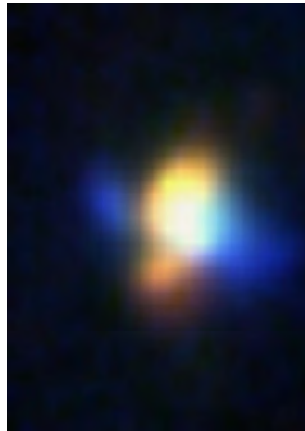
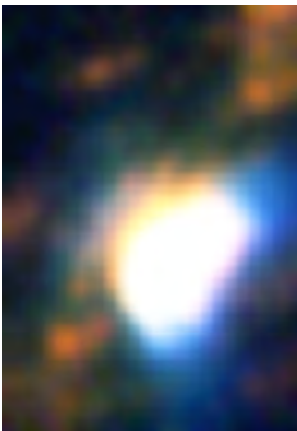
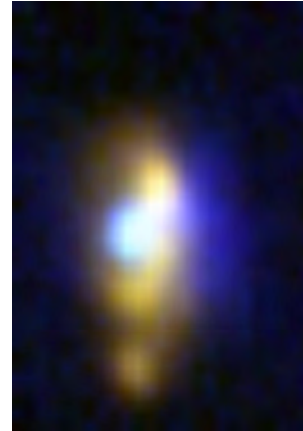
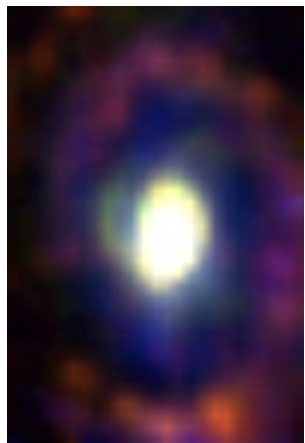


MCG-02-51-008**NGC 6860****NGC 2992****NGC 838****ESO137-G34****NGC 613****NGC 7582****NGC 5664****NGC 1125****IC5063****NGC 1068****IC 1481****NGC 5728****MCG-06-23-038****MARK 573**

These images of Seyfert Galaxies
courtesy of the
*Siding Spring Southern Seyfert
Spectroscopic Snapshot Survey (S7)*

They are all obtained with the
Wide Field Spectrograph (WiFeS)
an integral field unit mounted on
the ANU 2.3m telescope.
The field is 25x38 arc sec.

Blue represents emission in [O III],
green [N II] and red, H α emission.
These distinguish the mode of
excitation of the gas.

Star forming regions appear red,
orange or yellow.

Regions ionised by the central Active
Galactic Nucleus appear purple, blue
turquoise or even green.
Here we map these Extended
Narrow Line Regions (ENLR).